



Article

Geographic Factors Associated with Poorer Outcomes in Patients Diagnosed with COVID-19 in Primary Health Care

Rosa Magallón-Botaya ^{1,2,3} , Bárbara Oliván-Blázquez ^{1,3,4,*} , Karen Lizzette Ramírez-Cervantes ^{5,6,7} ,
Fátima Méndez-López-de-la-Manzanara ¹, Isabel Aguilar-Palacio ^{1,8,9} , Marc Casajuana-Closas ^{3,10}
and Eva Andrés-Esteban ^{5,6}

- ¹ GAIAP Research Group, Institute for Health Research Aragon (IIS Aragon), 50009 Zaragoza, Spain; rosamaga@unizar.es (R.M.-B.); fatima.lopezmendez@hotmail.com (F.M.-L.-d.-l.-M.); iaguilar@unizar.es (I.A.-P.)
 - ² Department of Medicine, Psychiatry and Dermatology, University of Zaragoza, 50009 Zaragoza, Spain
 - ³ Research Network on Preventive Activities and Health Promotion (RedIAPP), 08007 Barcelona, Spain; mcasajuana@idiapjgol.info
 - ⁴ Department of Psychology and Sociology, University of Zaragoza, 50009 Zaragoza, Spain
 - ⁵ Department of Applied Economics, Rey Juan Carlos University, 28300 Madrid, Spain; karenlizzetteramirez@gmail.com (K.L.R.-C.); e.andres@live.com (E.A.-E.)
 - ⁶ Bleeding Patient Research Group, Idi-Paz Research Institute, 28029 Madrid, Spain
 - ⁷ Prevention Department, Spanish Association against Cancer, 28040 Madrid, Spain
 - ⁸ Department of Preventive Medicine and Public Health, University of Zaragoza, 50009 Zaragoza, Spain
 - ⁹ GRISSA Research Group, 50009 Zaragoza, Spain
 - ¹⁰ Fundació Institut Universitari per a la recerca a l'Atenció Primària de Salut Jordi Gol i Gurina (IDIAPJGol), 08007 Barcelona, Spain
- * Correspondence: barbaraolivan@gmail.com



Citation: Magallón-Botaya, R.; Oliván-Blázquez, B.; Ramírez-Cervantes, K.L.; Méndez-López-de-la-Manzanara, F.; Aguilar-Palacio, I.; Casajuana-Closas, M.; Andrés-Esteban, E. Geographic Factors Associated with Poorer Outcomes in Patients Diagnosed with COVID-19 in Primary Health Care. *Int. J. Environ. Res. Public Health* **2021**, *18*, 3842. <https://doi.org/10.3390/ijerph18073842>

Academic Editors: Manoj Sivan, Ng Yee Sien and Sofia Straudi

Received: 2 February 2021

Accepted: 2 April 2021

Published: 6 April 2021

Publisher's Note: MDPI stays neutral with regard to jurisdictional claims in published maps and institutional affiliations.



Copyright: © 2021 by the authors. Licensee MDPI, Basel, Switzerland. This article is an open access article distributed under the terms and conditions of the Creative Commons Attribution (CC BY) license (<https://creativecommons.org/licenses/by/4.0/>).

Abstract: *Background:* The prognosis of older age COVID-19 patients with comorbidities is associated with a more severe course and higher fatality rates but no analysis has yet included factors related to the geographical area/municipality in which the affected patients live, so the objective of this study was to analyse the prognosis of patients with COVID-19 in terms of sex, age, comorbidities, and geographic variables. *Methods:* A retrospective cohort of 6286 patients diagnosed with COVID-19 was analysed, considering demographic data, previous comorbidities and geographic variables. The main study variables were hospital admission, intensive care unit (ICU) admission and death due to worsening symptoms; and the secondary variables were sex, age, comorbidities and geographic variables (size of the area of residence, distance to the hospital and the driving time to the hospital). A comparison analysis and a multivariate Cox model were performed. *Results:* The multivariate Cox model showed that women had a better prognosis in any type of analysed prognosis. Most of the comorbidities studied were related to a poorer prognosis except for dementia, which is related to lower admissions and higher mortality. Suburban areas were associated with greater mortality and with less hospital or ICU admission. Distance to the hospital was also associated with hospital admission. *Conclusions:* Factors such as type of municipality and distance to hospital act as social health determinants. This fact must be taken account in order to establish specific prevention measures and treatment protocols.

Keywords: COVID-19; primary health care; geographic factors; outcomes

1. Introduction

As of 5 January 2021, more than 83 million cases of the novel coronavirus disease 2019 (COVID-19) have been detected worldwide, and more than 1.8 million people have died from the disease [1]. Spain has become one of the countries most affected by the disease, and one of the countries with the highest COVID-19 testing rates [2–4].

The response of National Health Service (NHS), especially that of Primary Health Care (PHC), has been crucial for containing COVID-19 [5]. Spain has included maintaining essential services by cancelling or postponing non-urgent activities and elective surgeries. Moreover, barriers to accessing usual care were mitigated by enhancing phone helplines, online assistance and emergency call centres [6]. Furthermore, the PHC services had to be reorganised according to their rural, urban or suburban characteristics, and home care and telemedicine were reinforced [3]. The first medical contact for COVID-19 cases is commonly through a PHC team, which determines the severity of symptoms, manages the follow-up of mild cases and organises the hospital referrals for moderate-severe cases [3]. However, the urban-rural gap could have affected the way in which the current health crisis was confronted [7]. In 2019, for instance, people over the age of 65 years represented 28.5% of the population of rural communities (≤ 2000 inhabitants) compared with 19.7% and 18.3% of suburban and urban communities, respectively [8]. In addition, 42% of older adults from rural areas considered that distance posed a major difficulty in accessing a PHC centre, which, along with a greater dependency for performing activities of daily living for this group and a lack of public transportation, could have caused an uneven impact of COVID-19 [9].

The Spanish NHS is decentralised; each of the 17 autonomous communities is responsible for the territorial administration of primary and hospital-based health services [10]. There are 13,163 PHC centres in Spain [11]; however, due to asymmetric population density, the centres are not uniformly distributed, with basic health areas in the smallest health care units each covering 2000–10,000 inhabitants. As observed in other territories [12,13], the current statistics show that the incidence of COVID-19 has been unequal across Spain [14]. For instance, recent Catalan studies have shown that the spread of the disease was slower in rural territories than in urban areas, being 6.5% higher in basic health areas with twice the population density [15]. However, the introduction of an infected individual into small but dense groups, can negatively impact the spread of the disease, as observed in several rural communities where a high incidence rate was related to the presence of a COVID-19-positive individual at highly attended funerals.

In countries such as India, 25% of COVID-19-related deaths have occurred in rural and suburban districts [12]. In the United States, the COVID-19 incidence and mortality rates of small and nonmetropolitan cities have been comparable to those of large cities [13].

An increasing number of articles have been addressing the prognosis of patients with COVID-19, showing that older age and comorbidities, were associated with a more severe course and higher fatality rates among individuals hospitalised for COVID-19 [16–18]. To our knowledge, no analysis has related factors related to the geographical area/municipality in which the affected patients live and their geographic accessibility to a referral hospital.

In countries such as Spain, specifically, the autonomous community of Aragon, having large rural areas and low population densities, the effects of spatial disparities on disease outcomes remain unknown. Aragón has an area of 47,719 km² and a population density of 28.20 inhabitants per km², with a higher proportion of older adults than younger ones. The older adults are more concentrated in rural areas, while the cities have younger populations. Zaragoza, the capital, contains half of the community's population, with only 13 municipalities exceeding 10,000 inhabitants. Rural nuclei (with fewer than 2000 inhabitants) represent 86% of the municipalities, where only 16.8% of the population lives. The population pyramid graph for Aragon [14] shows a contracting structure. The main age group is 30–49 years (active population), which has been augmented by a significant increase in the immigrant population since 2000. However, population older than 65 years has grown significantly since the beginning of the century, a common feature in all developed regions. The origins of this situation include a substantial reduction in fertility rates, and an increase in life expectancy at birth. This region's geographical and demographic characteristics make it comparable to many other regions of inland Spain and other European and American countries with high levels of ageing, geographical dispersion and depopulation.

The pyramid shows low crude birth rates due to the small number of initial cohorts (aged 0–4 years) and the low crude death rates.

The objective of this study was therefore to analyse the prognosis (hospital admission, intensive care unit (ICU) admission and death) of patients with COVID-19 in terms of sex, age, comorbidities, and geographics variables.

2. Materials and Methods

We conducted a retrospective cohort study that considered demographic data, previous comorbidities and geographics variables of 6286 patients diagnosed with COVID-19 in Aragon (Spain) from the beginning of the current pandemic to 30 June 2020.

The inclusion criteria were: 18 years of age and older and having a diagnostic code of “coronavirus infection” with a positive polymerase chain reaction (PCR) diagnostic test result. Due to the universal nature of the NHS, the data obtained are considered representative of practically 100% of the population who met the criteria for inclusion.

The primary study variables were: hospital admission, ICU admission and death due to COVID-19. the secondary variables were the following:

- (1) Sociodemographic data: sex and age.
- (2) Previous medical history: previous cardiovascular diseases (CVD): chronic heart disease, heart failure, cerebrovascular disease, hypertension, dyslipidaemia, previous chronic respiratory diseases, chronic renal diseases, chronic liver diseases, chronic neurological disorders, chronic haematological diseases (leukaemia, lymphoma, myeloma), cancer/neoplasia, HIV and other immunodeficiencies, obesity, diabetes, dermatological diseases, rheumatological diseases, mental disorders and dementia. The diseases were classified according to the International Classification of Diseases 11th Revision [19].
- (3) Geographic variables: The size of the area of residence (rural areas were defined as municipalities with a population of fewer than 2000 inhabitants, suburban areas were defined as towns with 2000 to 10,000 inhabitants, and urban areas were defined as having more than 10,000 inhabitants), municipalities with nursing home care (yes/no), distance (Km) from the residence to the hospital and the driving time (minutes) from the residence to the hospital.

For statistical analysis, we extracted all data on the demographics, clinical treatments, and outcomes from the available Electronic Medical Records. We described the continuous variables using robust statistics, such as median and interquartile range (IQR) due to the non-normality of the variables as confirmed by the Shapiro Wilk test. On the other hand, descriptive analyses of the categorical data were based on their frequency distribution. For the comparison of continuous data between groups, non-normality distribution was considered and in this specific case, we were unable to use the usual statistics test. Therefore, we used the Mann–Whitney nonparametric U test [20]. To compare categorical variables between the good/poor (hospital admission, ICU admission and death) prognosis groups, the Chi-squared test was used.

We performed the survival estimates with the Kaplan–Meier method [21], comparing the survival curves according to the prognosis groups; the Wilcoxon test was used instead classical log-rank because survival curves did not reach the median survival [22]. Multivariate analysis was performed by a Cox regression model using a forward stepwise procedure, introducing as independent variables the poorest prognosis factor. The results of the multivariate model are presented as a hazard ratio (HR; 95% CI). This regression model is common when modelling time to event (considering event: time to hospitalize, ICU admission or death).

The statistical analysis was performed using STATA/SE V16.0 (company, city, state abbrev if USA, country), and *p*-values < 0.05 were considered statistically significant.

All procedures contributing to this study complied with the ethical standards of the Helsinki Declaration of 1975 (revised in 2008). The study protocol was approved by the

Clinical Research Ethics Committee of Aragón (PI20/262). Clinical data were used in a nonidentifiable format.

3. Results

Of the 6286 patients studied, 2738 (43.56%) were men, 4440 (71.72%) lived in urban areas, and the median age was 61 years (IQR 61–82). Table 1 lists the demographic characteristics and the prevalence of previous diseases. The patients were significantly older in the poorest prognosis groups, regardless of whether the patients were in the hospital admission, ICU admission or death groups. The female sex was associated with a better prognosis (Table 1). With a considerably lower ICU admission rate, than among men (28.7% vs. 62.2%) and a lower final mortality rate (48.5% vs. 57.9%) and hospital admission rate (47.6% vs. 62.2%) than the men.

There was a statistically significant correlation with the size of the patients' area of residence. Patients living in urban areas had poorer prognoses in terms of hospital and ICU admissions. However, this tendency did not occur with respect to mortality, given that 65.39% of the patients who died lived in urban areas compared with 72.77% of those who survived ($p < 0.01$). The prevalence rate of patients with COVID-19 in each of the 3 analysed areas shows a high prevalence in the suburban zone, with 48 cases per 10,000 inhabitants in the urban zones, 55 cases per 10,000 inhabitants in the suburban zones, and 35 cases per 10,000 inhabitants in the rural zones. The analysed distance to the hospitals through the median distance and time of arrival to the hospital (Table 1) also proved to be significant.

Table 1. Sociodemographic data and previous comorbidities according to different prognoses.

Sociodemographic Data	Hospital Admission			ICU Admission			Death		
	No	Yes	<i>p</i>	No	Yes	<i>p</i>	No	Yes	<i>p</i>
<i>n</i> (%)	3797 (60.40%)	2489 (39.60%)		6034 (95.99%)	252 (4.01%)		5313 (84.52%)	973 (15.48%)	
Age *	52 (39–72)	75 (61–86)	<0.001	45 (60–83)	67 (59–74)	0.002	56 (43–74)	86 (79–92)	<0.001
Sex									
Male	1434 (37.77%)	1304 (52.39%)	<0.001	2557 (42.38%)	181 (71.83%)	<0.001	2237 (42.10%)	501 (51.49%)	<0.001
Female	2363 (62.23%)	1185 (47.61%)		3477 (57.62%)	71 (28.71%)		3076 (57.90%)	472 (48.51%)	
Municipality classification									
Rural	430 (11.52%)	302 (12.24%)	0.002	696 (11.69%)	36 (14.63%)	0.009	622 (11.88%)	110 (11.40%)	<0.001
Suburban	559 (17.93%)	358 (14.51%)		1003 (16.85%)	24 (9.76%)		803 (15.34%)	224 (23.21%)	
Urban	2633 (70.55%)	1807 (73.25%)		4254 (71.46%)	186 (75.61%)		3809 (72.77%)	631 (65.39%)	
Municipality—hospital distance, km *	0 (0–27.55)	0 (0–18.70)	<0.001	0 (0–25.20)	0 (0–17.70)	0.136	0 (0–25.20)	0 (0–27.70)	0.018
Drive time from municipality to hospital, min *	0 (0–23)	0 (0–19)	<0.001	0 (0–23)	0 (0–17)	0.127	0 (0–22)	0 (0–25)	0.015

* Continuous variables. Median and IQR are shown. For the remainder of the (categorical) variables, the number of subjects and percentage is shown.

In terms of previous comorbidity (Table 2), the poorer prognoses were associated with a higher prevalence of any of the diseases studied, except for HIV and other immunodeficiency diseases.

In the case of ICU admissions, neither CKD ($p = 0.891$) nor chronic neurological disease ($p = 0.143$) were statistically significant. Also, other diagnoses such as neoplasia, HIV, malnutrition, dermatological or rheumatological disorders were not related to ICU admissions. In the case of mortality, chronic liver disease was the only comorbidity having a similar distribution among patients who died and those who did not ($p = 0.835$). HIV was not significant in any case, except for hospital admission (p -value = 0.048), although the rate of this diagnosis was very low. Obesity, on the other hand, doubles its rate in hospitalized patients (hospital or ICU admission) but was not significant in mortality.

Figures 1–3 show the patients' characteristics according to prognosis, with the survival curves according to the size of the residents' area and the p -value based on the log-rank test. In the Kaplan–Meier curves, we observed that the poorest prognosis was related to suburban areas where fewer people were admitted to hospital than in the other municipali-

ties; nevertheless, the COVID-19-related mortality in these areas was higher than in the other areas studied.

Table 2. Previous comorbidities.

	Hospital Admission			ICU Admission			Death		
	No	Yes	<i>p</i>	No	Yes	<i>p</i>	No	Yes	<i>p</i>
Previous cardiovascular disease	1013 (26.68%)	1168 (46.93%)	<0.001	1013 (26.68%)	1168 (46.93%)	<0.001	1013 (26.68%)	1168 (46.93%)	<0.001
Hypertension	961 (25.31%)	1290 (51.83%)	<0.001	2124 (35.20%)	127 (50.40%)	<0.001	1612 (30.34%)	639 (65.57%)	<0.001
Dyslipidaemia	897 (23.62%)	1060 (42.83%)	<0.001	1828 (30.29%)	135 (53.57%)	<0.001	1551 (29.19%)	412 (42.34%)	<0.001
Previous respiratory disease	306 (8.06%)	348 (13.98%)	<0.001	306 (8.06%)	348 (13.98%)	<0.001	306 (8.06%)	348 (13.98%)	<0.001
Chronic kidney disease	212 (5.58%)	352 (14.14%)	<0.001	542 (8.98%)	22 (8.73%)	0.891	348 (6.55%)	216 (22.20%)	<0.001
Chronic liver disease	51 (1.34%)	64 (2.57%)	<0.001	104 (1.72%)	11 (4.37%)	0.002	98 (1.84%)	17 (1.75%)	0.835
Chronic neurological disorder	586 (15.43%)	475 (19.08%)	<0.001	1027 (17.02%)	34 (13.49%)	0.143	869 (16.36%)	192 (19.73%)	0.010
Immunosuppression /previous transplantation	71 (1.87%)	118 (4.74%)	<0.001	174 (2.88%)	15 (5.95%)	0.005	143 (2.69%)	46 (4.73%)	0.001
Chronic haematological disease (including leukaemia, lymphoma, myeloma)	1205 (31.74%)	1185 (47.61%)	<0.001	2263 (37.50%)	127 (50.40%)	<0.001	1828 (34.41%)	562 (57.76%)	<0.001
Neoplasia	258 (6.79%)	369 (14.83%)	<0.001	596 (9.88%)	31 (12.30%)	0.208	436 (8.21%)	191 (19.63%)	<0.001
HIV and other immunodeficiencies	25 (0.66%)	28 (1.12%)	0.048	50 (0.83%)	3 (1.19%)	0.538	40 (0.75%)	13 (1.34%)	0.067
Obesity	321 (8.45%)	366 (14.70%)	<0.001	629 (10.42%)	58 (23.02%)	<0.001	574 (10.80%)	113 (11.61%)	0.457
Malnutrition	549 (14.46%)	522 (20.97%)	<0.001	1022 (16.94%)	49 (19.44%)	0.300	819 (15.42%)	252 (25.90%)	<0.001
Diabetes	319 (8.40%)	496 (19.93%)	<0.001	758 (12.56%)	57 (22.62%)	<0.001	569 (10.71%)	246 (25.28%)	<0.001
Mental illness	784 (20.65%)	694 (27.88%)	<0.001	1433 (23.75%)	45 (17.86%)	0.031	1163 (21.89%)	315 (32.37%)	<0.001
Dementia	311 (8.19%)	365 (14.66%)	<0.001	673 (11.15%)	3 (1.19%)	<0.001	381 (7.17%)	295 (30.32%)	<0.001
Dermatological disease	1355 (35.69%)	1063 (42.71%)	<0.001	2317 (38.40%)	101 (40.08%)	0.591	1982 (37.30%)	436 (44.81%)	<0.001
Rheumatological disease	478 (12.59%)	554 (22.26%)	<0.001	998 (16.54%)	34 (13.49%)	0.201	769 (14.47%)	263 (27.03%)	<0.001

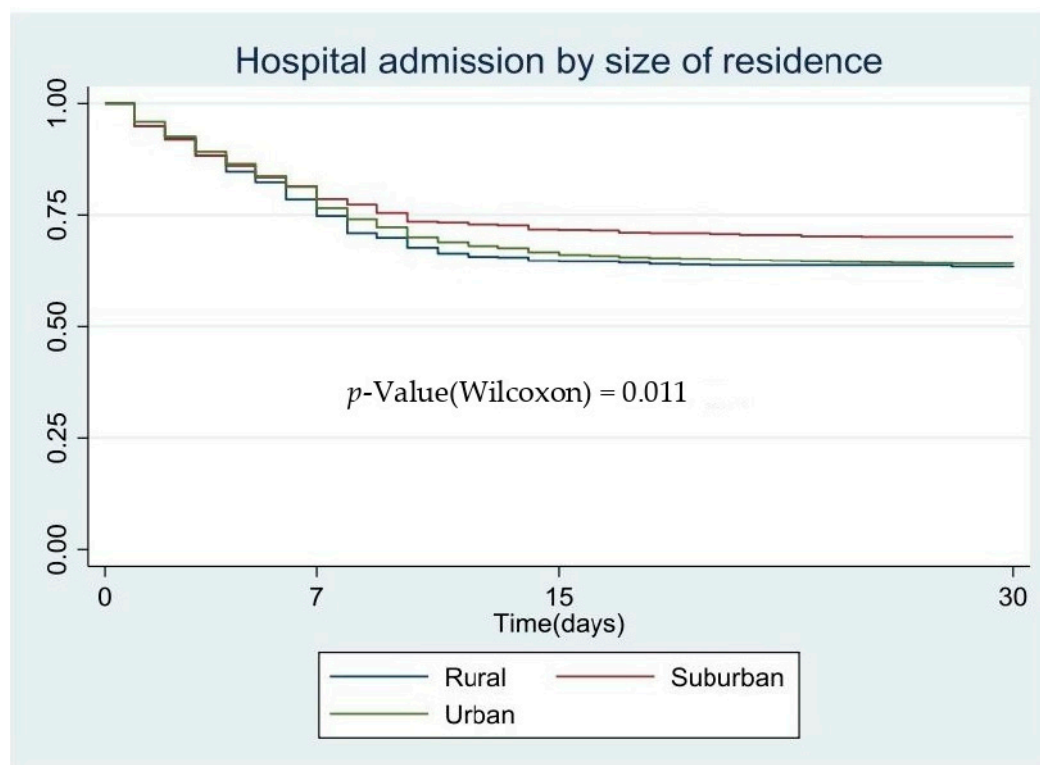


Figure 1. Hospital admission by size of residence, Kaplan–Meier survival.

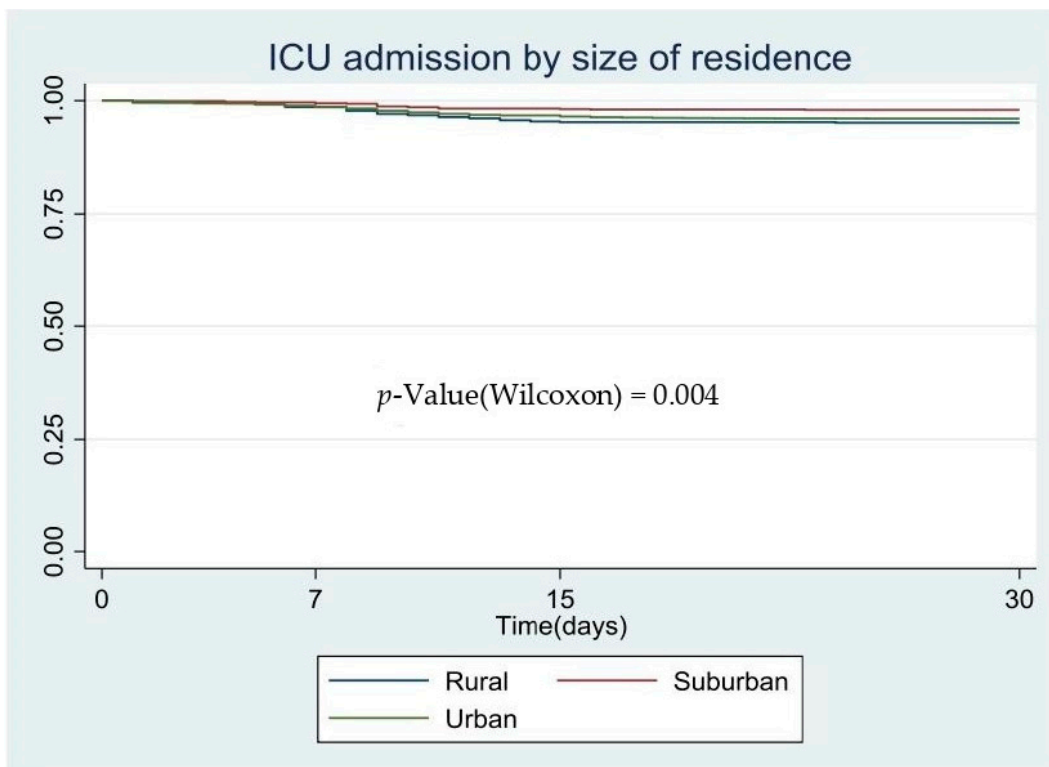


Figure 2. ICU admission by size of residence, Kaplan–Meier survival.

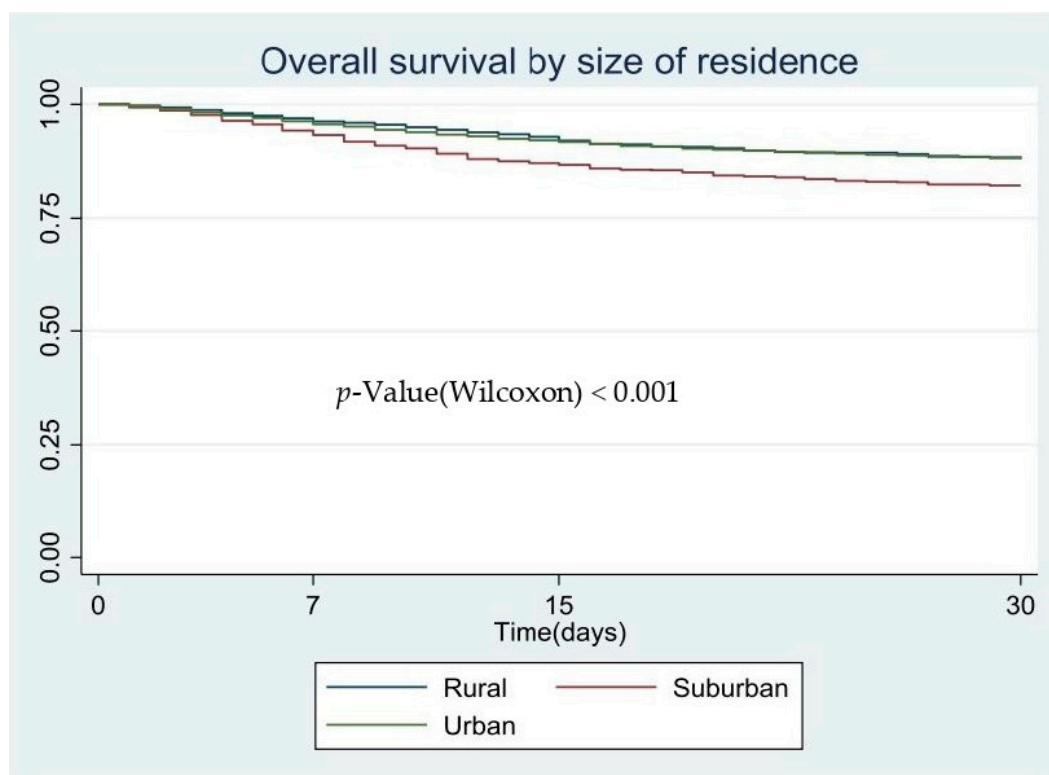


Figure 3. Overall survival by size of residence, Kaplan–Meier survival.

Table 3 shows the multivariate Cox model for each prognosis. As previously noted, women had a better prognosis than men in any type of analysed prognosis. We can also observe similar behaviour in terms of prognosis in the urban and rural areas. Nevertheless,

suburban areas were associated with greater mortality and with less hospital or ICU hospitalisation. Distance from the hospital was also associated with hospital admission such that the closer the patients' residence was to the hospital, the greater the likelihood that they would be admitted.

Table 3. Multivariate Cox models.

Variables	Hospital Admission				ICU Admission				Death			
	HR	<i>p</i>	95% CI		HR	<i>p</i>	95% CI		HR	<i>p</i>	95% CI	
Age	1.03	<0.001	1.02	1.03					1.08	<0.001	1.07	1.09
Sex												
			Ref				Ref				Ref	
	0.59	<0.001	0.54	0.64	0.28	<0.001	0.21	0.38	0.54	<0.001	0.47	0.62
Area												
			Ref				Ref				Ref	
	0.77	0.002	0.65	0.91	0.50	0.011	0.29	0.85	1.31	0.022	1.04	1.66
	1.14	0.054	1.00	1.30	1.02	0.930	0.71	1.46	1.23	0.047	1.00	1.51
Municipality—hospital distance	0.99	0.001	0.98	0.99								
Comorbidities												
Previous cardiovascular disease	1.14	0.006	1.04	1.26					1.18	0.018	1.03	1.35
Hypertension	1.12	0.034	1.01	1.24	1.43	0.010	1.09	1.89				
Dyslipidaemia	1.35	<0.001	1.23	1.47	2.18	0.000	1.66	2.86				
Previous respiratory disease	1.14	0.040	1.01	1.29								
Chronic neurological disorder	1.14	0.021	1.02	1.27								
Ulcerative disease/immunosuppression/previous transplant	1.40	0.001	1.15	1.71								
Chronic haematological disease (including leukaemia, lymphoma, myeloma)	1.08	0.098	0.99	1.18	1.33	0.038	1.02	1.74	1.20	0.007	1.05	1.37
Neoplasia	1.12	0.049	1.00	1.27								
Obesity	1.29	<0.001	1.14	1.46	2.04	<0.001	1.49	2.78				
Diabetes	1.15	0.017	1.02	1.28					1.20	0.018	1.03	1.39
Dementia	0.86	0.024	0.75	0.98	0.10	<0.001	0.03	0.31	1.38	<0.001	1.20	1.59
Dermatological disease	1.08	0.085	0.99	1.18								

Ref is the category used as a reference in the analysis.

In terms of the prognostic model of hospital admission, most of the comorbidities studied were related to a poorer prognosis except for dementia (HR 0.86; 95% CI 0.75–0.98), which acts as a protective factor for admissions but is still related to higher mortality.

In the ICU admission model, there were comorbidities such as CVD, neurological disease and previous respiratory disease that disappeared from the final model. Only hypertension (HR 1.43; 95% CI 1.09–1.89), dyslipidaemia (HR 2.18; 95% CI 1.66–2.86), chronic haematological disease (HR 1.33; 95% CI 1.02–1.74) and obesity (HR 2.04; 95% CI 1.49–2.78) were associated with a poorer prognosis in terms of ICU admission.

Lastly, the comorbidities associated with mortality were CVD (HR 1.18; 95% CI 1.03–1.35), previous haematological disease (HR 1.20; 95% CI 1.05–1.37), diabetes (HR 1.20; 95% CI 1.03–1.39) and dementia (HR 1.38; 95% CI 1.20–1.59) (Table 3).

4. Discussion

The results of this study show how factors such as type of municipality and distance to hospital can act as social health determinants and establish the outcomes of patients with COVID-19. This study concurs with relevant studies in the literature on the prognosis of patients with COVID-19 while showing that geographical factors are relevant to the prognosis.

One of our relevant results, is that suburban areas were associated with increased mortality and with lower hospital and ICU admission. The reduced accessibility of suburban areas to hospitals compared with urban zones could be a causal factor in this higher mortality; nevertheless, this is not the case in more rural areas, which have shown the same associations as urban areas, despite the fact that, in Spain, individuals older than 65 years accounted for 28.5% of the population of rural communities [8]. It is probably that small towns, which are typically further away from urban cities, are inhabited by an older population with greater social isolation and less need to travel for work reasons, so it is highly likely that the older population has been particularly cautious in the face of the pandemic.

Mixed results can be found for the type of municipality. A study conducted in India showed that 1 in 4 COVID-19-related deaths occurred in rural and suburban districts [12]; however, the incidence and mortality rates in small and nonmetropolitan cities has been comparable to those of large cities in the US [13]. In our study, 11.64% of the sample lived in rural areas with similar hospitalisation rates than urban areas. In a recent systematic review, the household and area-level social determinants of multimorbidity were analysed [23]; findings from the rural areas were inconsistent and insufficiently studied. In the same review, distance from the hospital was associated with hospitalisation, such that the closer the patient lived to the hospital (urban areas), the greater the likelihood that they would be hospitalised [23]. In an analysis of avoidable hospitalisations in chronic diseases, the patients' place of residence explained only 33% of the variation in hospital admission [24].

Geographic differences in COVID-19 case, deaths and cumulative incidences likely reflect a combination of epidemiologic and population-level factors, including the timing of the start of the pandemic; population density; age distribution and prevalence of underlying medical conditions; timing and extent of community mitigation measures; diagnostic testing capacity; and public health practices [25].

Other variables in our study, age and sex, were significant factors in explaining the prognosis of the patients diagnosed in PHC, which agrees with most previous studies that have stated that male and older patients (≥ 50 years) are at higher risk of greater severity and death [26–28]. Older adults had greater initial comorbidities, more severe symptoms and are more likely to experience multiorgan involvement [27], whereas the sex disparity in the outcomes of patients with COVID-19 could be explained by the fact that men are more likely than women to experience severe forms of infection, and have higher mortality rates and a higher prevalence of the main risk factors of COVID-19 [28]. Other explanations include the mechanisms of viral infection, the immune response, and the development of hyperinflammation and systemic complications, particularly thromboembolism. Women therefore have a more favourable disease course than men, regardless of age range, although the rate of severe acute respiratory syndrome coronavirus 2 (SARS-CoV-2) infection appears to be similar for both sexes [29]. Our results reinforce these findings, showing a major difference in ICU admissions by sex, probably due to the lower severity of the disease in women, making ICU admission unnecessary. Women's greater longevity also means that their deaths occur more frequently in non-hospital settings.

The presence of CVD, diabetes, dementia, hypertension, dyslipidaemia and obesity were relevant to the outcomes of our 6286 patients with COVID-19. Other studies have shown the influence of morbidities in COVID-19. A meta-analysis with 55 studies and 10,014 patients [24] showed that the presence of at least 1 comorbidity such as hypertension, diabetes, CVD, respiratory disease, CKD, etc., significantly increased the severity of infection. Other studies and meta-analyses have obtained similar results [17,30–33].

Hypertension is associated with a nearly 2.5-fold increased risk of severe COVID-19 (OR 2.49; 95% CI 1.98–3.12; $I^2 = 24\%$) and a similarly significant higher mortality risk (OR 2.42; 95% CI 1.51–3.90; $I^2 = 0\%$) [30]. CVD are also associated with an increased risk of poor outcomes in patients with COVID-19 [18,32]. Diabetes in patients with COVID-19 is associated with a 2-fold increase in mortality and COVID-19 severity compared with patients without diabetes [30], however, this negative impact might not be related to hyperglycaemia *per se* but rather to the comorbidities associated, in the context of metabolic syndrome, as well as CVD and CKD, which are common and severe complications of chronic hyperglycaemia [17].

In our study, severity of COVID-19 appears to increase with increasing body mass index (BMI). A study analysing 45,650 participants from 30 studies with obesity revealed increased ORs of severe COVID-19 associated with higher BMI [34], may be associated to a vitamin D deficiency, hinders immunity and causes mechanical lung compression [35]. Other potential pathophysiological mechanisms are the chronic proinflammatory state, the excessive oxidative stress response and the impaired immunity that is commonly reported in obesity [36]. Furthermore, pre-existing comorbidities increase these complications [35].

Although the patients with dementia in our study had a higher mortality rate, the disease acted as a protective factor for hospital admission, which could be because health systems might be more reluctant to hospitalise patients with dementia and COVID-19, especially in cases of saturated health systems. Patients with pre-existing neurological disorders, can develop exacerbation of neurological symptoms and severe COVID-19 [37,38]. A high percentage of elderly patients with dementia admitted to ICU or isolated medical departments experience neurological and neuropsychiatric symptoms and worsening of their condition [38].

The main study strengths include the complex model, including geographic variables related to the comorbidities and prognosis of patients with COVID-19. Our findings can be extrapolated to other countries having similar population pyramids and geographic dispersion. However, this study also has certain limitations, since variables such as income, access to health care, and access to transportation were not collected or analyzed due to the universal nature of the NHS. These variables may be relevant in countries that do not have a universal NHS.

The current pandemic, like other previous pandemics, is occurring in the context of social and health inequalities that need to be resolved [39,40]. This study has sought to contribute knowledge to the current pandemic by analysing the comorbidities associated with a large sample of patients with COVID-19, relating them to health determinants such as age, sex, geographical accessibility to health services and place of residence.

In future studies, data should be compared with those of other countries, especially to provide greater knowledge on the behaviour of health systems and methods for adjusting the use of these systems to this new disease, reducing as much as possible the clinical and epidemiologic variability and exploring the place of residence as a social determinant.

5. Conclusions

Factors such as type of municipality and distance to hospital act as social health determinants. This fact must be taken account in order to establish specific prevention measures and treatment protocols.

Author Contributions: Conceptualization: R.M.-B., B.O.-B.; data curation: F.M.-L.-d.-I.-M., M.C.-C., I.A.-P.; formal analysis: E.A.-E., B.O.-B., R.M.-B.; writing—original draft: R.M.-B., B.O.-B., E.A.-E., K.L.R.-C.; writing—review & editing: All authors. All authors have read and agreed to the published version of the manuscript.

Funding: This study has been funded by Instituto de Salud Carlos III through the projects COV20/00634 and COV20/00519 (Co-funded by European Regional Development Fund/European Social Fund “A way to make Europe”/“Investing in your future”). We thank the redIAPP “Red de Investigación en Actividades Preventivas y Promoción de la Salud” Primary Care Prevention and Health Promotion Network (RD16/0007/0005 & RD16/0007/0001) for support in the development of this study.

Institutional Review Board Statement: The study was conducted according to the guidelines of the Declaration of Helsinki. Protocol was approved (13/05/2020) by the Clinical Research Ethics Committee of Institute of Research of Aragón, IIS-Aragón (protocol code PI20/262).

Informed Consent Statement: Patient consent was waived because the data were obtained from the big data of Public Health Service and patients were not identifiable.

Data Availability Statement: The data that support the findings of this study are available from the corresponding author, upon reasonable request.

Acknowledgments: We wish to thank the Primary Care Prevention and Health Promotion Network (RedIAPP-Health Institute Carlos III, Spain); Research Group B21_R17 of the Department of Research, Innovation and University of the Government of Aragón (Spain); Feder Funds “A way to make Europe”, for their support in the development of the study.

Conflicts of Interest: The authors declare no conflict of interest.

References

1. World Health Organization. Weekly Epidemiological Update. WHO. 2021. Available online: <https://www.who.int/publications/m/item/weekly-epidemiological-update---5-january-2021> (accessed on 7 January 2021).
2. Spanish Ministry of Health. *Update No 284. Coronavirus Disease (COVID-19)*; Spanish Ministry of Health: Madrid, Spain, 2021. Available online: https://www.msbs.gob.es/profesionales/saludPublica/ccayes/alertasActual/nCov/documentos/Actualizacion_284_COVID-19.pdf (accessed on 5 January 2021).
3. Spanish Ministry of Health. *Management of COVID-19 in Primary Health Care and Home Care*; Spanish Ministry of Health: Madrid, Spain, 2020. Available online: <https://www.msbs.gob.es/profesionales/saludPublica/ccayes/alertasActual/nCov/home.htm> (accessed on 7 January 2021).
4. Orús, A. Number of Coronavirus Medical Tests Performed Per Million Inhabitants in the Most Affected Countries in the World. 2020. Available online: <https://es.statista.com/estadisticas/1107740/covid-19-tasa-de-pruebas-realizadas-en-paises-seleccionados-del-mundo/> (accessed on 8 January 2021).
5. OECD. *Beyond Containment: Health Systems Responses to COVID 19 in the OECD*; OECD: Paris, France, 2020. Available online: https://read.oecd-ilibrary.org/view/?ref=119_119689-ud5comtff84&title=Beyond_Containment:Health_systems_responses_to_COVID-19_in_the_OECD (accessed on 21 December 2020).
6. WHO Europe. *European Observatory of Health Systems and Policies COVID-19 Health System Response Monitor Spain*; WHO Europe: Geneva, Switzerland, 2020. Available online: <https://www.covid19healthsystem.org/countries/spain/livinghit.aspx?Section=3.1Planningservices&Type=Section> (accessed on 7 January 2021).
7. Government of Spain. *Covid-19 in Spanish Rural Areas. Risk Factors and Opportunities to Improve the Quality of Life of the Elderly*; Government of Spain: Madrid, Spain, 2020. Available online: <http://envejecimiento.csic.es/documentos/documentos/enred-indicadoresbasicos2020.pdf> (accessed on 21 December 2020).
8. Pérez Díaz, J.; Abellán García, A.; Aceituno Nieto, P.; Ramiro Fariñas, D. Un perfil de las personas mayores en España, 2020. In *Indicadores Estadísticos Básicos*; CSHH-CSIC: Madrid, Spain, 2020. Available online: <http://envejecimiento.csic.es/documentos/documentos/enred-indicadoresbasicos2020.pdf> (accessed on 16 October 2020).
9. Fóti, K. *Eurofound. Is rural Europe being left behind? European Quality of Life Survey 2016*; Publications Office of the European Union: Luxembourg, 2019. Available online: <https://www.eurofound.europa.eu/publications/policy-brief/2019/is-rural-europe-being-left-behind> (accessed on 15 November 2020).
10. Ministerio de Sanidad y Política Social. *National Health System Spain*; Ministerio de Sanidad y Política Social: Madrid, Spain, 2010.
11. Corominas, C. *Spain Sets a New Minimum of Primary Health Centers and Falls to 2012 Levels*; Redacción Médica: Madrid, Spain, 2017. Available online: <https://www.redaccionmedica.com/secciones/sanidad-hoy/espana-marca-un-nuevo-minimo-de-centros-de-salud-13-163-al-nivel-de-2012-7402> (accessed on 16 November 2020).
12. Gera, I. *Covid-19: A Fourth of all Deaths Are in Rural, Semi-Urban India*; Financial Express: Delhi, India, 2020. Available online: <https://www.financialexpress.com/lifestyle/health/covid-19-a-fourth-of-all-deaths-are-in-rural-semi-urban-india/2092903/> (accessed on 29 September 2020).
13. Zhang, C.H.; Schwartz, G.G. Spatial Disparities in Coronavirus Incidence and Mortality in the United States: An Ecological Analysis as of May 2020. *J. Rural Health* **2020**, *36*, 433–445. [CrossRef]
14. Statistics National Institute. *Statistical Information for the Analysis of the Impact of the COVID-19 Crisis*. 2020. Available online: https://www.ine.es/covid/covid_inicio.htm (accessed on 7 January 2021).
15. Regional Quantitative Analysis Research Group (AQR-UB). *Differences between Urban and Rural Municipalities in the Spread of COVID-19 in the Catalan Territory*; AQR-University of Barcelona: Barcelona, Spain, 2020. Available online: <http://www.ub.edu/> (accessed on 21 December 2020).
16. Jain, V.; Yuan, J.M. Predictive symptoms and comorbidities for severe COVID-19 and intensive care unit admission: A systematic review and meta-analysis. *Int. J. Public Health* **2020**, *65*, 533–546. [CrossRef]
17. Pugliese, G.; Vitale, M.; Resi, V.; Orsi, E. Is diabetes mellitus a risk factor for CORONA Virus Disease 19 (COVID-19)? *Acta Diabetol.* **2020**, *57*, 1275–1285. [CrossRef] [PubMed]
18. Tian, W.; Jiang, W.; Yao, J.; Nicholson, C.J.; Li, R.H.; Sigurslid, H.H.; Wooster, L.; Rotter, J.I.; Guo, X.; Malhotra, R. Predictors of mortality in hospitalized COVID-19 patients: A systematic review and meta-analysis. *J. Med. Virol.* **2020**, *92*, 1875–1883. [CrossRef] [PubMed]
19. World Health Organization. CIE-11. Available online: <https://icd.who.int/es> (accessed on 16 January 2021).
20. Kolassa, J.E. *An Introduction to Nonparametric Statistics*; CRC Press, Taylor and Francis Group: Boca Raton, FL, USA, 2020; ISBN 9780367194840.
21. Kleinbaum, D.G.; Klein, M. *Survival Analysis: A Self-Learning Text*, 3rd ed.; Springer: New York, NY, USA, 2012.
22. Villers Gómez, S.; Vázquez Guerra, C.F.; Ramírez Teodoro, L.A. Modelos de Supervivencia. [Survival Models]. Available online: https://carlosfernandovg.github.io/supervivencia_y_series_FC2021-1/an%C3%A1lisis-de-supervivencia.html (accessed on 31 March 2021).
23. Ingram, E.; Ledden, S.; Beardon, S.; Gomes, M.; Hogarth, S.; McDonald, H.; Osborn, D.P.; Sheringham, J. Household and area-level social determinants of multimorbidity: A systematic review. *J. Epidemiol. Community Health* **2020**. [CrossRef]
24. Angulo-Pueyo, E.; Martínez-Lizaga, N.; Bernal-Delgado, E. Wide systematic variations in potentially avoidable hospitalisations of chronically ill patients: Ecological study of basic health areas and healthcare areas. *Rev. Clin. Esp.* **2020**. [CrossRef]

25. CDC COVID-19 Response Team. Geographic Differences in COVID-19 Cases, Deaths, and Incidence—United States. *MMWR Morb. Mortal. Wkly. Rep.* **2020**, *17*, 465–471. [[CrossRef](#)]
26. Barek, M.A.; Aziz, M.A.; Islam, M.S. Impact of age, sex, comorbidities and clinical symptoms on the severity of COVID-19 cases: A meta-analysis with 55 studies and 10014 cases. *Heliyon* **2020**, *6*, e05684. [[CrossRef](#)]
27. Chen, T.; Dai, Z.; Mo, P.; Li, X.; Ma, Z.; Song, S.; Chen, X.; Luo, M.; Liang, K.; Gao, S.; et al. Clinical Characteristics and Outcomes of Older Patients with Coronavirus Disease 2019 (COVID-19) in Wuhan, China: A Single-Centered, Retrospective Study. *J. Gerontol. Ser. A Biol. Sci. Med. Sci.* **2020**, *75*, 1788–1795. [[CrossRef](#)] [[PubMed](#)]
28. Khalatbari-Soltani, S.; Cumming, R.C.; Delpierre, C.; Kelly-Irving, M. Importance of collecting data on socioeconomic determinants from the early stage of the COVID-19 outbreak onwards. *J. Epidemiol. Community Health* **2020**, *74*, 620–623. [[CrossRef](#)]
29. Pivonello, R.; Auriemma, R.S.; Pivonello, C.; Isidori, A.M.; Corona, G.; Colao, A.; Millar, R.P. Sex disparities in Covid-19 severity and outcomes: Are men weaker or women stronger? *Neuroendocrinology* **2020**. [[CrossRef](#)] [[PubMed](#)]
30. Kumar, A.; Arora, A.; Sharma, P.; Anikhindi, S.A.; Bansal, N.; Singla, V.; Khare, S.; Srivastava, A. Is diabetes mellitus associated with mortality and severity of COVID-19? A meta-analysis. *Diabetes Metab. Syndr. Clin. Res. Rev.* **2020**, *14*, 535–545. [[CrossRef](#)] [[PubMed](#)]
31. Lippi, G.; Wong, J.; Henry, B.M. Hypertension in patients with coronavirus disease 2019 (COVID-19): A pooled analysis. *Pol. Arch. Intern. Med.* **2020**, *130*, 304–309. [[CrossRef](#)]
32. Pranata, R.; Huang, I.; Lim, M.A.; Wahjoepramono, E.J.; July, J. Impact of cerebrovascular and cardiovascular diseases on mortality and severity of COVID-19—systematic review, meta-analysis, and meta-regression. *J. Stroke Cerebrovasc. Dis.* **2020**, *29*. [[CrossRef](#)]
33. Pranata, R.; Lim, M.A.; Huang, I.; Raharjo, S.B.; Lukito, A.A. Hypertension is associated with increased mortality and severity of disease in COVID-19 pneumonia: A systematic review, meta-analysis and meta-regression. *JRAAS J. Renin Angiotensin Aldosterone Syst.* **2020**, *21*. [[CrossRef](#)]
34. Huang, Y.; Lu, Y.; Huang, Y.-M.; Wang, M.; Ling, W.; Sui, Y.; Zhao, H.-L. Obesity in patients with COVID-19: A systematic review and meta-analysis. *Metabolism* **2020**, *113*, 154378. [[CrossRef](#)]
35. Cuschieri, S.; Grech, S. Obesity population at risk of COVID-19 complications. *Glob. Health Epidemiol. Genom.* **2020**, *5*. [[CrossRef](#)]
36. Caci, G.; Albin, A.; Malerba, M.; Noonan, D.M.; Pochetti, P.; Polosa, R. COVID-19 and Obesity: Dangerous Liaisons. *J. Clin. Med.* **2020**, *9*, 2511. [[CrossRef](#)]
37. Kubota, T.; Kuroda, N. Exacerbation of neurological symptoms and COVID-19 severity in patients with preexisting neurological disorders and COVID-19: A systematic review. *Clin. Neurol. Neurosurg.* **2020**. [[CrossRef](#)]
38. Ryoo, N.; Pyun, J.-M.; Baek, M.J.; Suh, J.; Kang, M.J.; Wang, M.J.; Youn, Y.C.; Yang, D.W.; Kim, S.Y.; Park, Y.H.; et al. Coping with Dementia in the Middle of the COVID-19 Pandemic. *Int. J. Agric. Biol.* **2020**, *35*, 1–21. [[CrossRef](#)]
39. OECD Health Policy Studies. Geographic Variations in Health Care. In *What Do We Know and What Can Be Done to Improve Health System Performance?* OECD: Paris, France, 2014.
40. Bambra, C.; Riordan, R.; Ford, J.; Matthews, F. The COVID-19 pandemic and health inequalities. *J. Epidemiol. Community Health* **2020**, *74*, 964–968. [[CrossRef](#)] [[PubMed](#)]