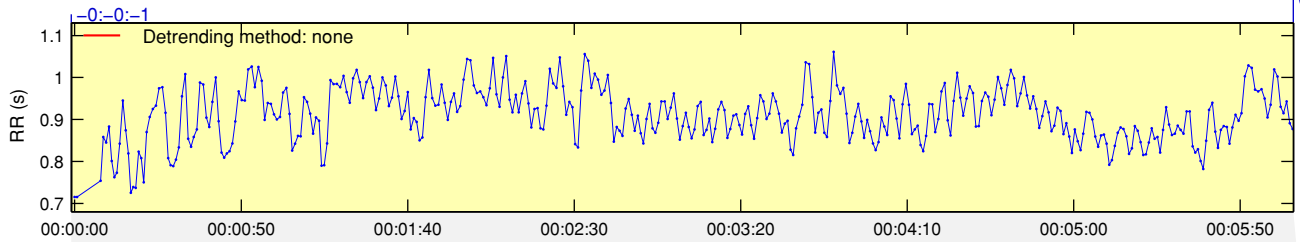


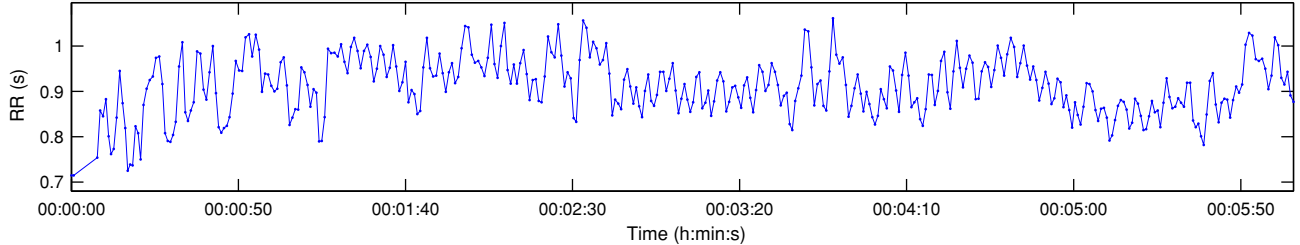
## RR Interval Time Series

Results for a single sample

00:06:06



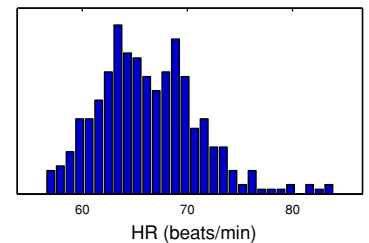
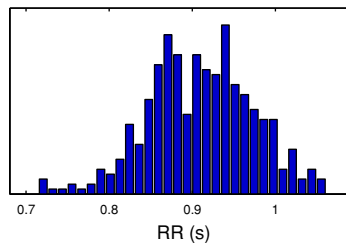
## Selected RR Series



## Time-Domain Results

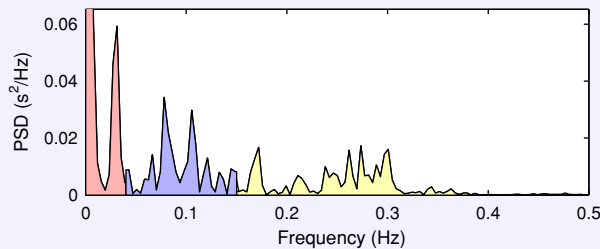
Variable	Units	Value
Mean RR*	(ms)	909.6
STD RR (SDNN)	(ms)	63.9
Mean HR*	(1/min)	66.30
STD HR	(1/min)	4.79
RMSSD	(ms)	47.7
NN50	(count)	114
pNN50	(%)	28.9
RR triangular index		16.500
TINN	(ms)	255.0

## Distributions\*



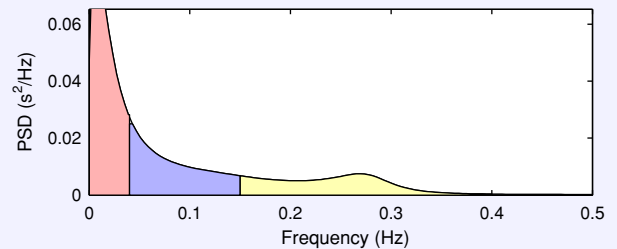
## Frequency-Domain Results

**FFT spectrum** (Welch's periodogram: 256 s window with 50% overlap)



Frequency Band	Peak (Hz)	Power (ms <sup>2</sup> )	Power (%)	Power (n.u.)
VLF (0-0.04 Hz)	0.0039	1824	48.0	
LF (0.04-0.15 Hz)	0.0781	994	26.2	50.3
HF (0.15-0.4 Hz)	0.2734	981	25.8	49.7
Total		3799		
LF/HF		1.013		

**AR Spectrum** (AR model order = 16, not factorized)

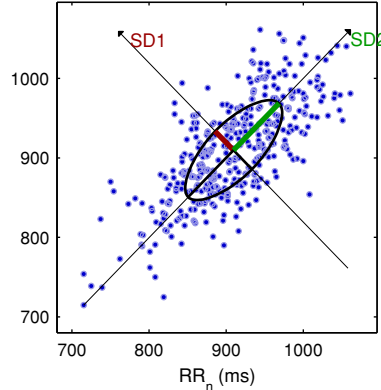


Frequency Band	Peak (Hz)	Power (ms <sup>2</sup> )	Power (%)	Power (n.u.)
VLF (0-0.04 Hz)	0.0039	2278	49.3	
LF (0.04-0.15 Hz)	0.0430	1325	28.7	56.7
HF (0.15-0.4 Hz)	0.2695	1013	21.9	43.3
Total		4617		
LF/HF		1.308		

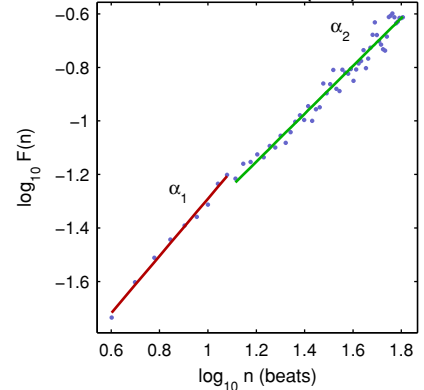
## Nonlinear Results

Variable	Units	Value
<b>Poincare plot</b>		
SD1	(ms)	33.8
SD2	(ms)	83.3
<b>Recurrence plot</b>		
Mean line length (Lmean)	(beats)	9.11
Max line length (Lmax)	(beats)	151
Recurrence rate (REC)	(%)	26.32
Determinism (DET)	(%)	97.30
Shannon Entropy (ShanEn)		2.967
<b>Other</b>		
Approximate entropy (ApEn)		1.267
Sample entropy (SampEn)		1.838
Detrended fluctuations (DFA): $\alpha_1$		1.069
Detrended fluctuations (DFA): $\alpha_2$		0.896
Correlation dimension (D2)		4.209
Multiscale entropy (MSE)		1.160 - 2.569

## Poincare Plot



## Detrended fluctuations (DFA)



\*Results are calculated from the non-detrended selected RR series.