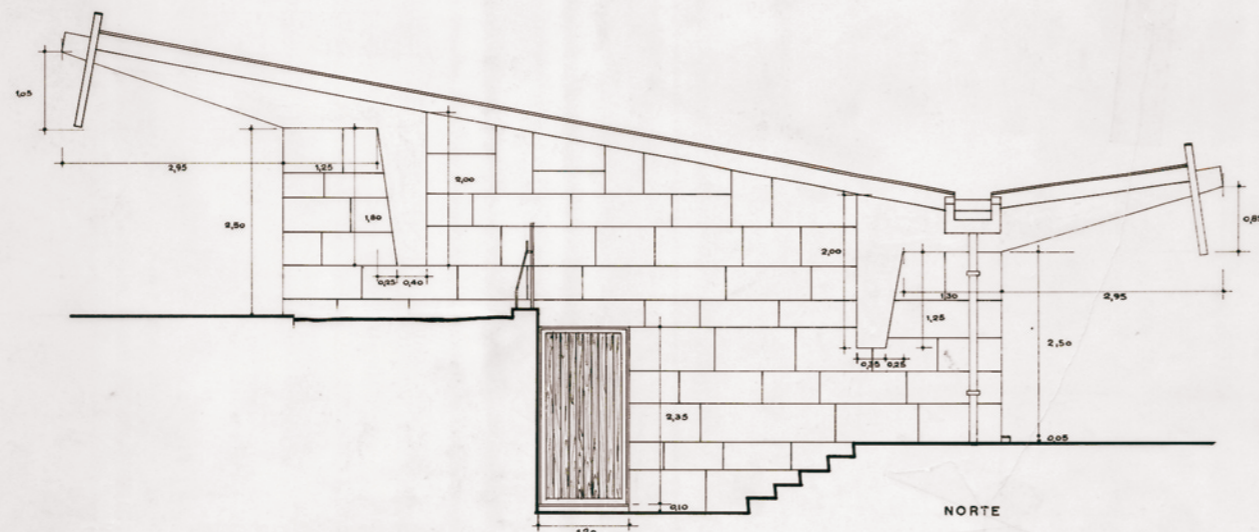
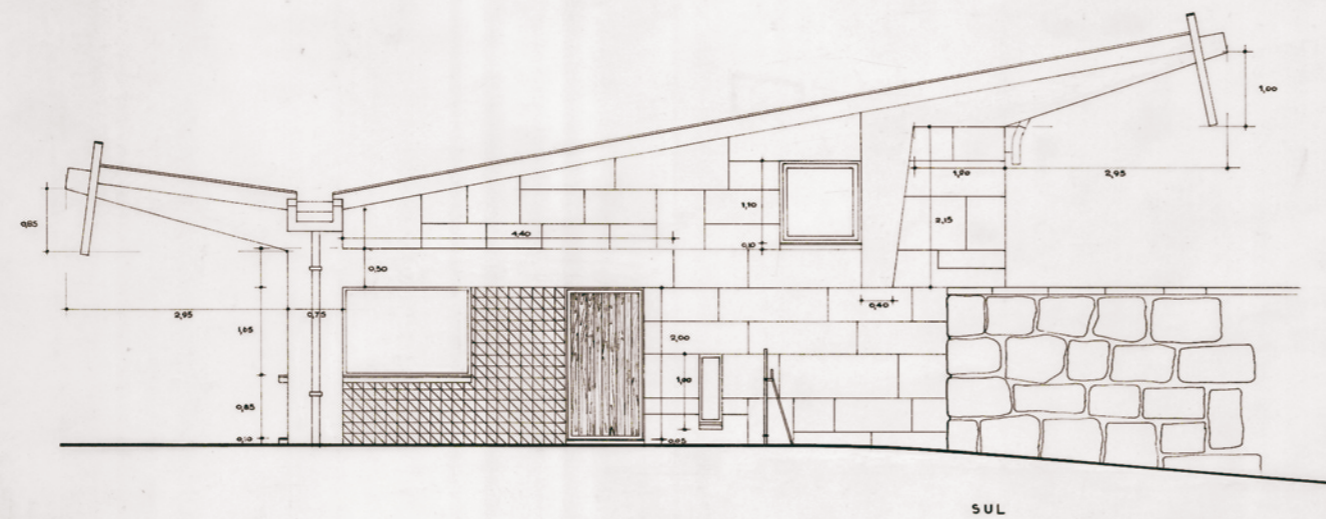
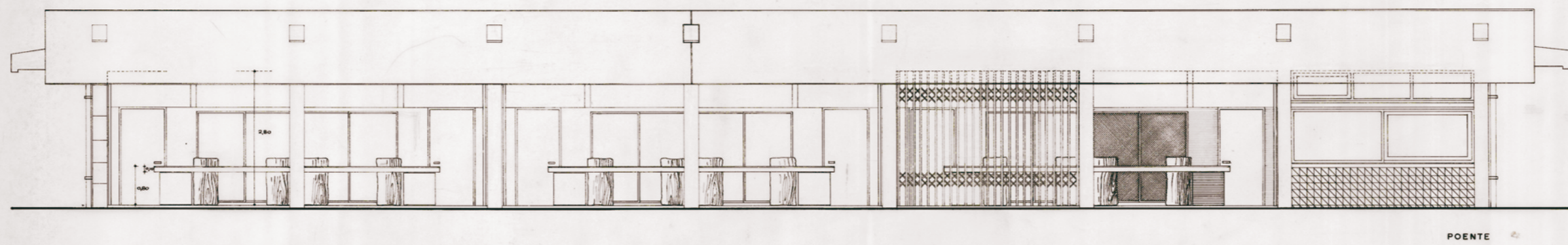
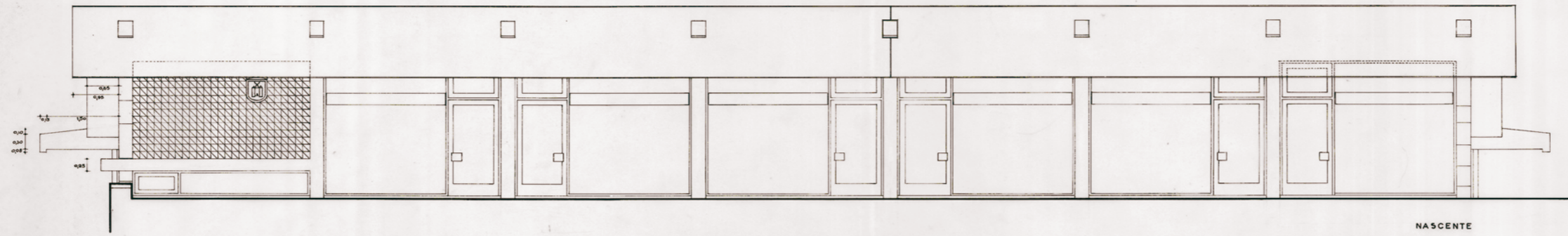


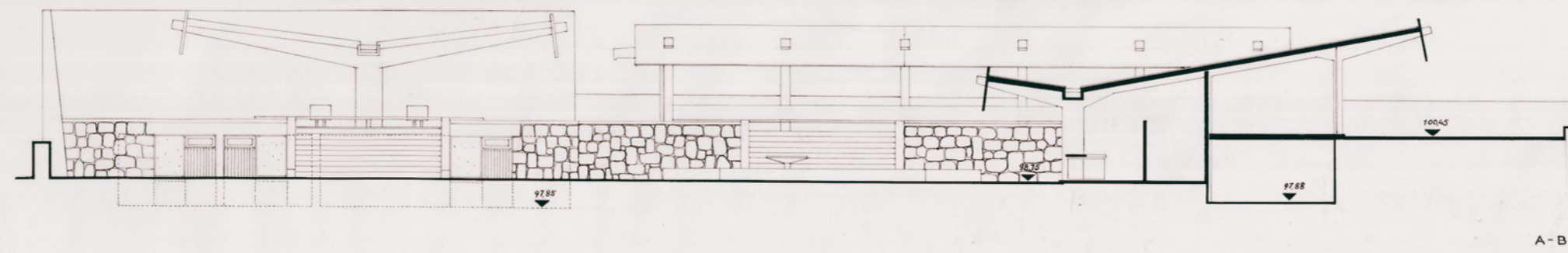
CMVF	PROJECTO	CORPO C4
MM	PLANTA e ALÇADOS	
SETEMBRO 1955	esc. 1/100	9

F. Silva

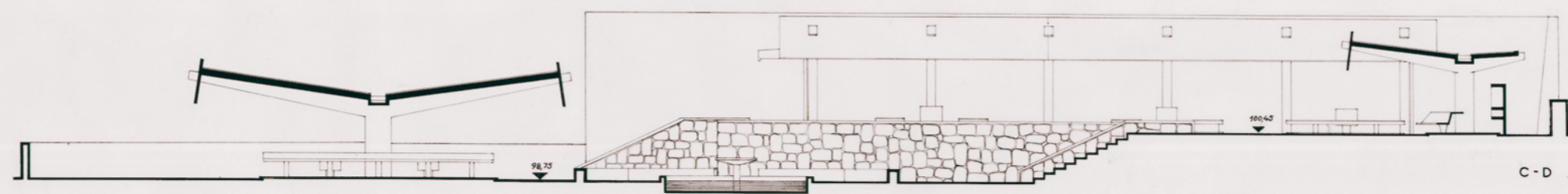


CMVF	PROYECTO	CORPO C1
MM		ALÇADOS
SETEMBRO 1955	esc. 1/100	5

[Handwritten signature]



A-B

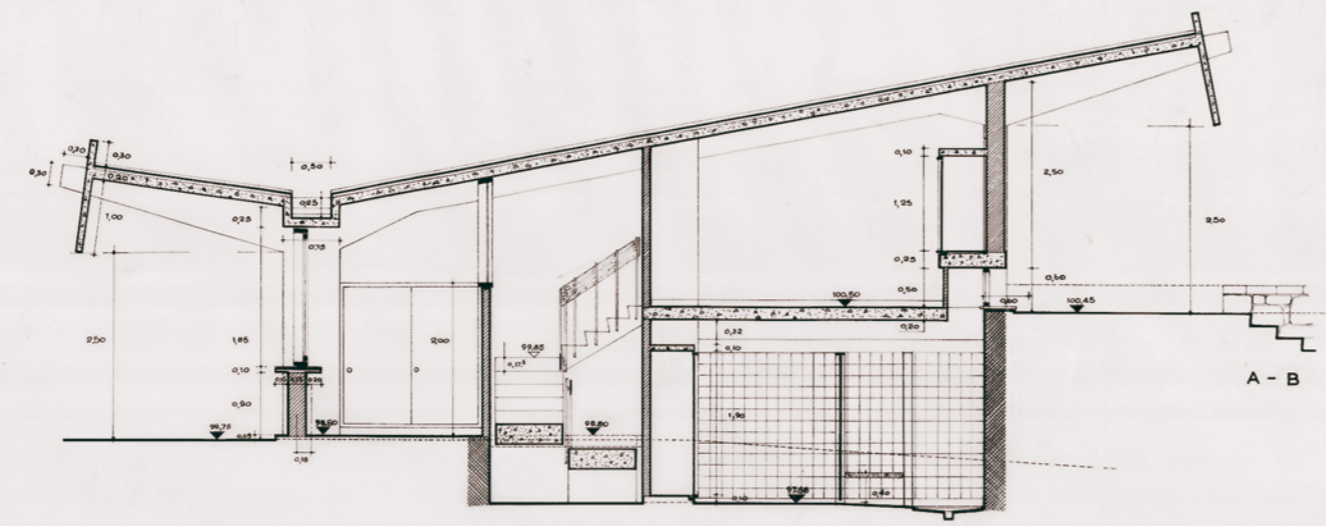
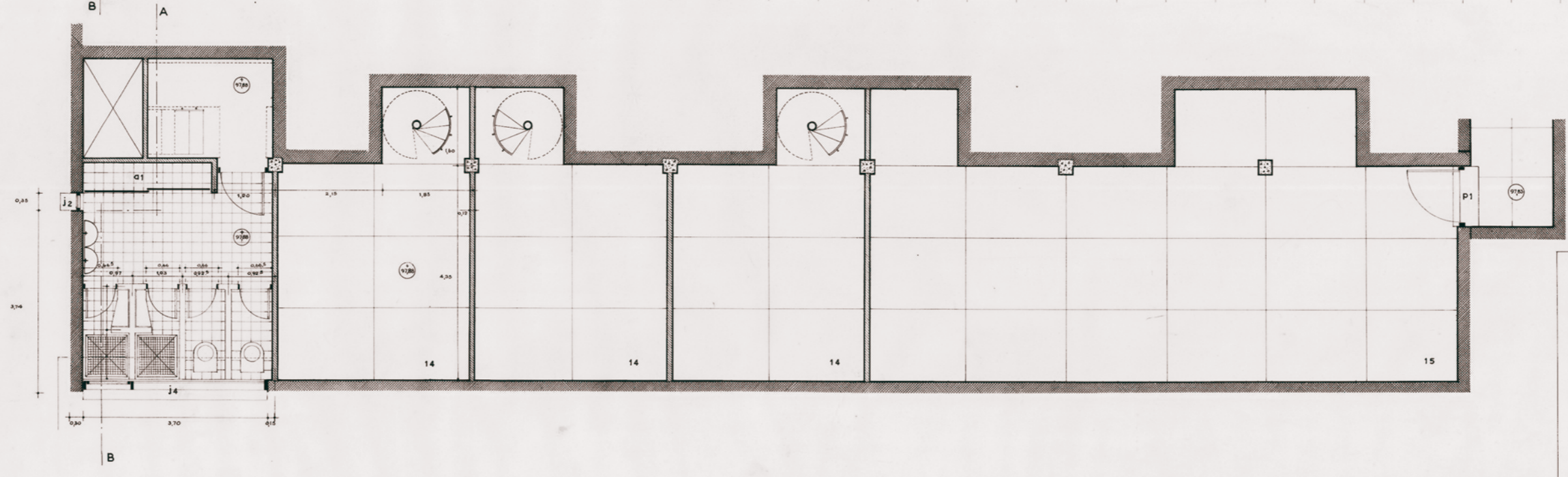
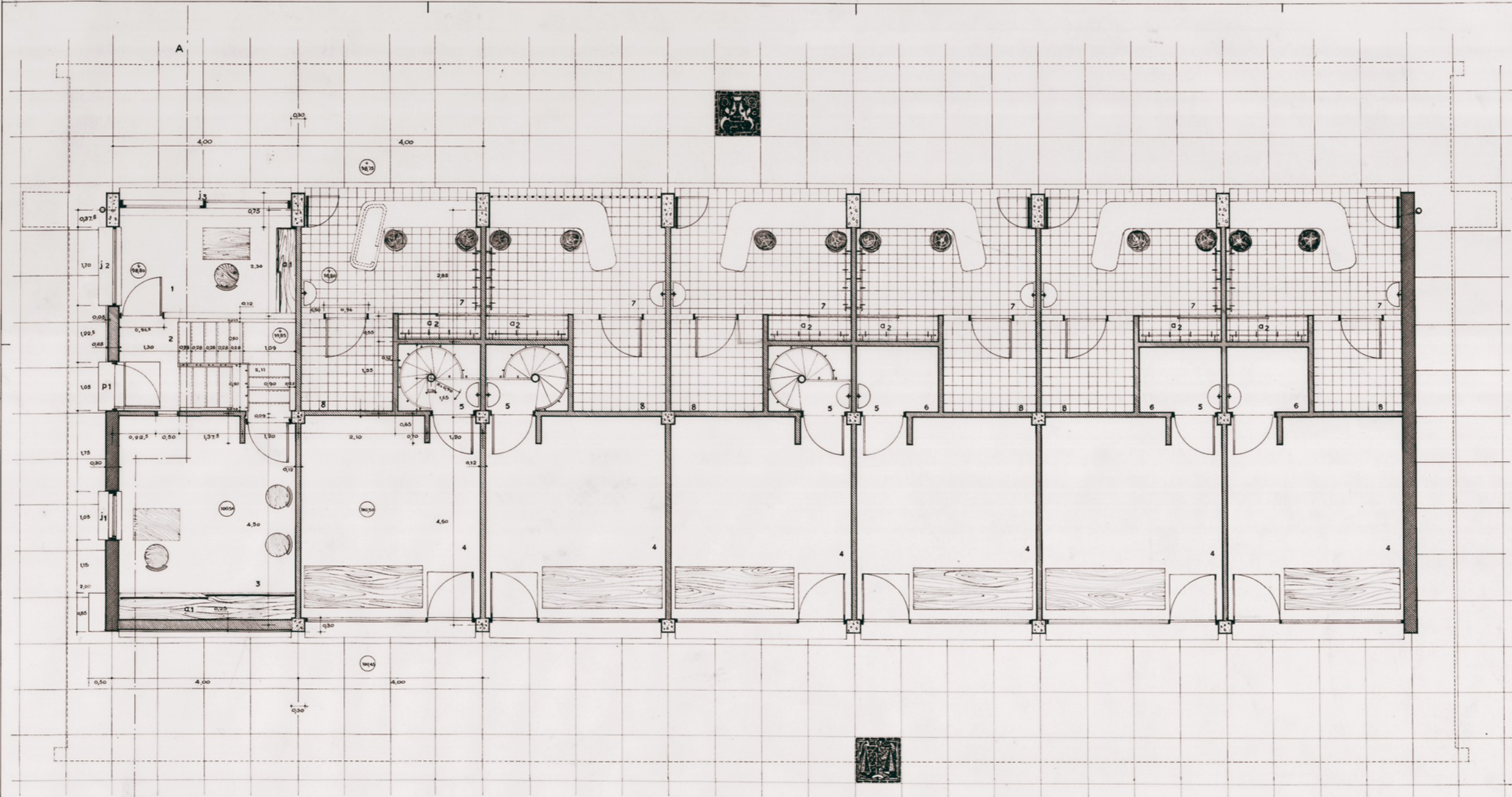


C-D



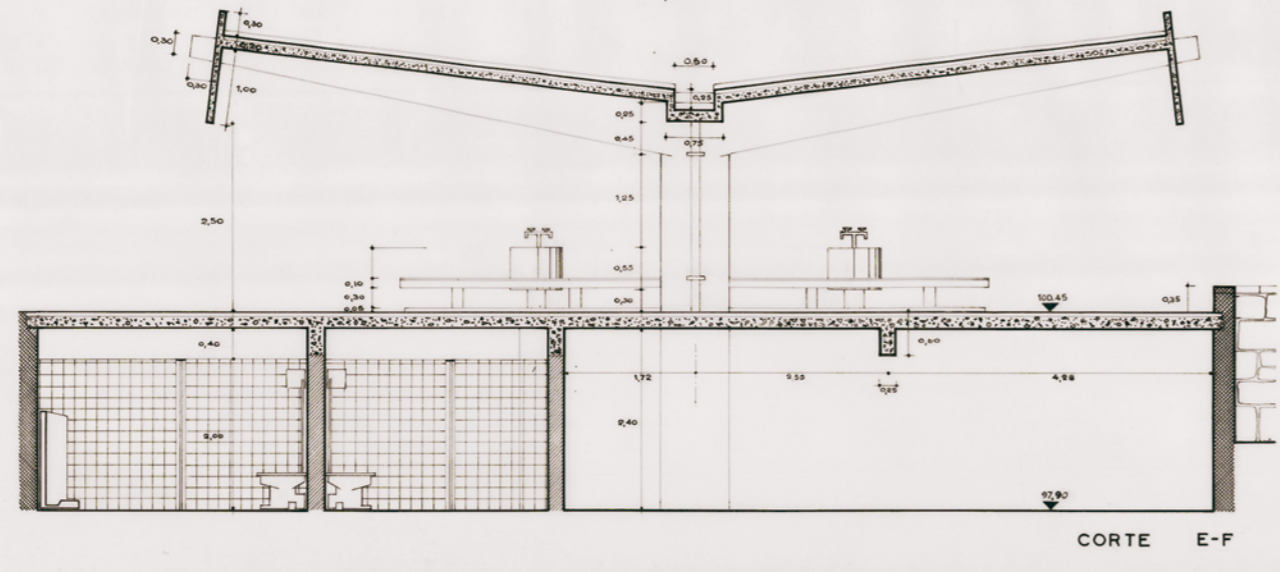
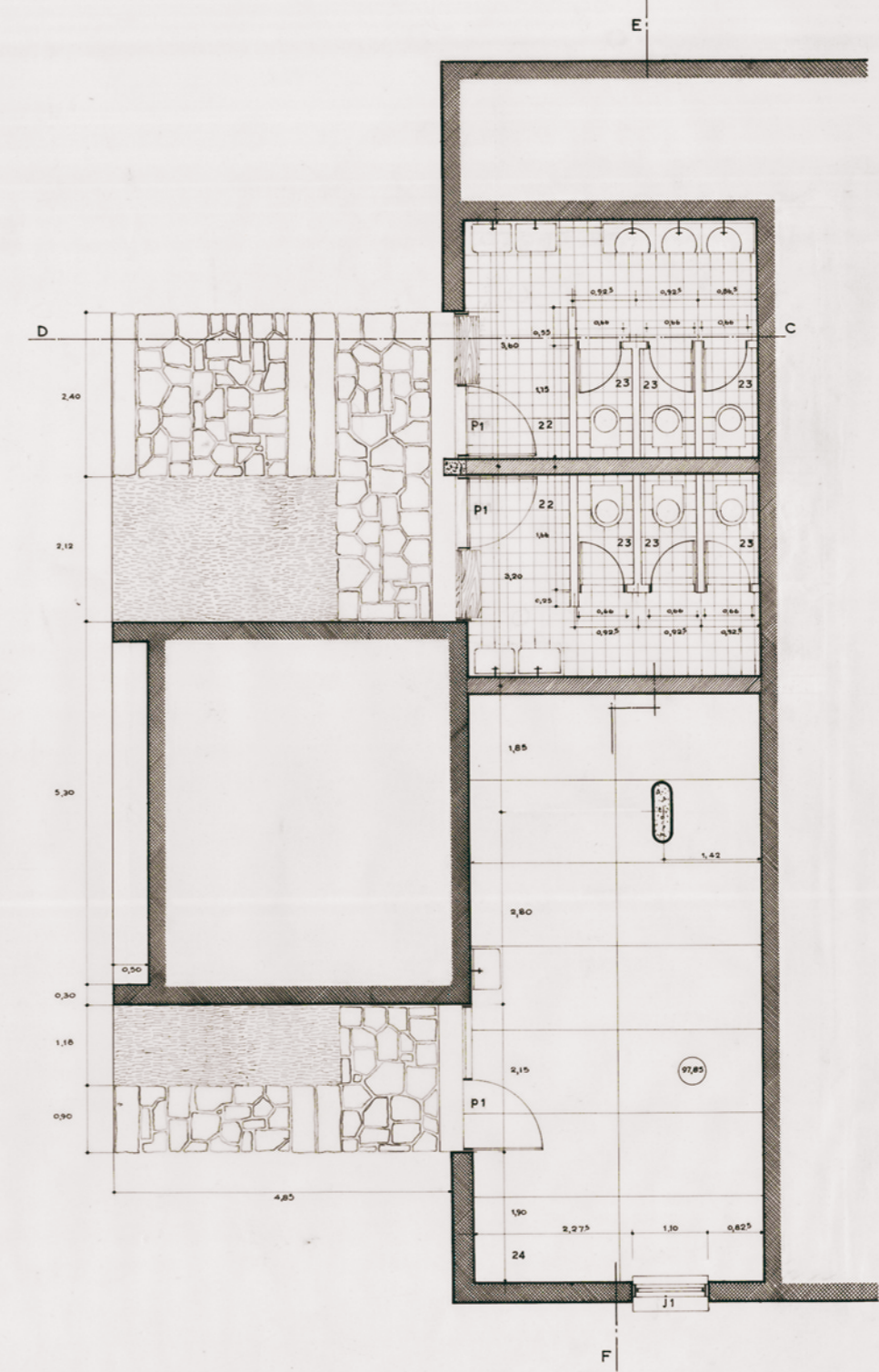
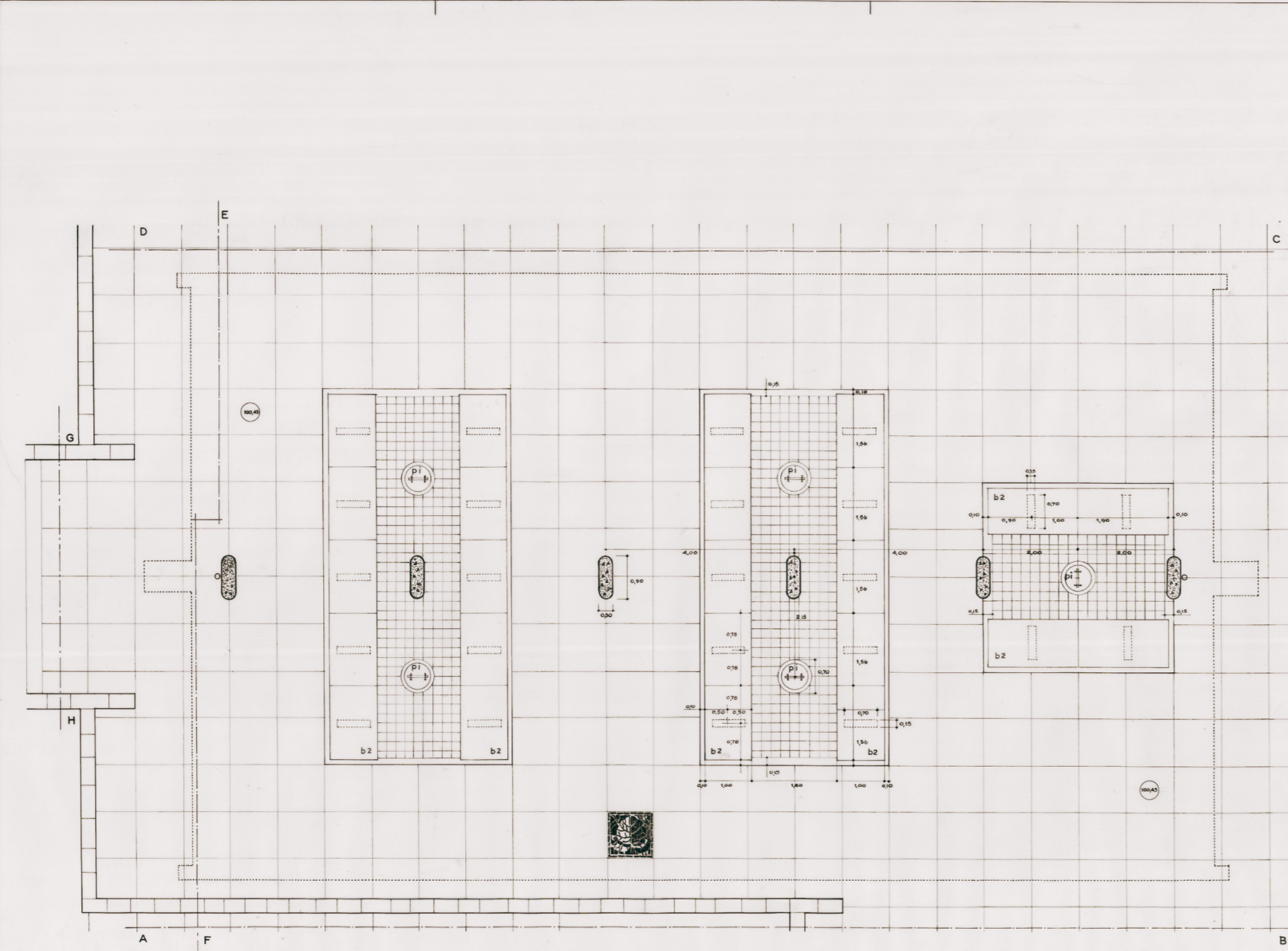
E-F

CMVF	PROJETO	CORTES DO CONJUNTO
MM		
SETEMBRO 1955	ESC. 1/100	5
<i>F. M. M.</i>		



CMVF PROJECTO CORPOC1 •
MM CAVE CC1
 PLANTAS e CORTE
 SETEMBRO 1955 ESC. 1/50

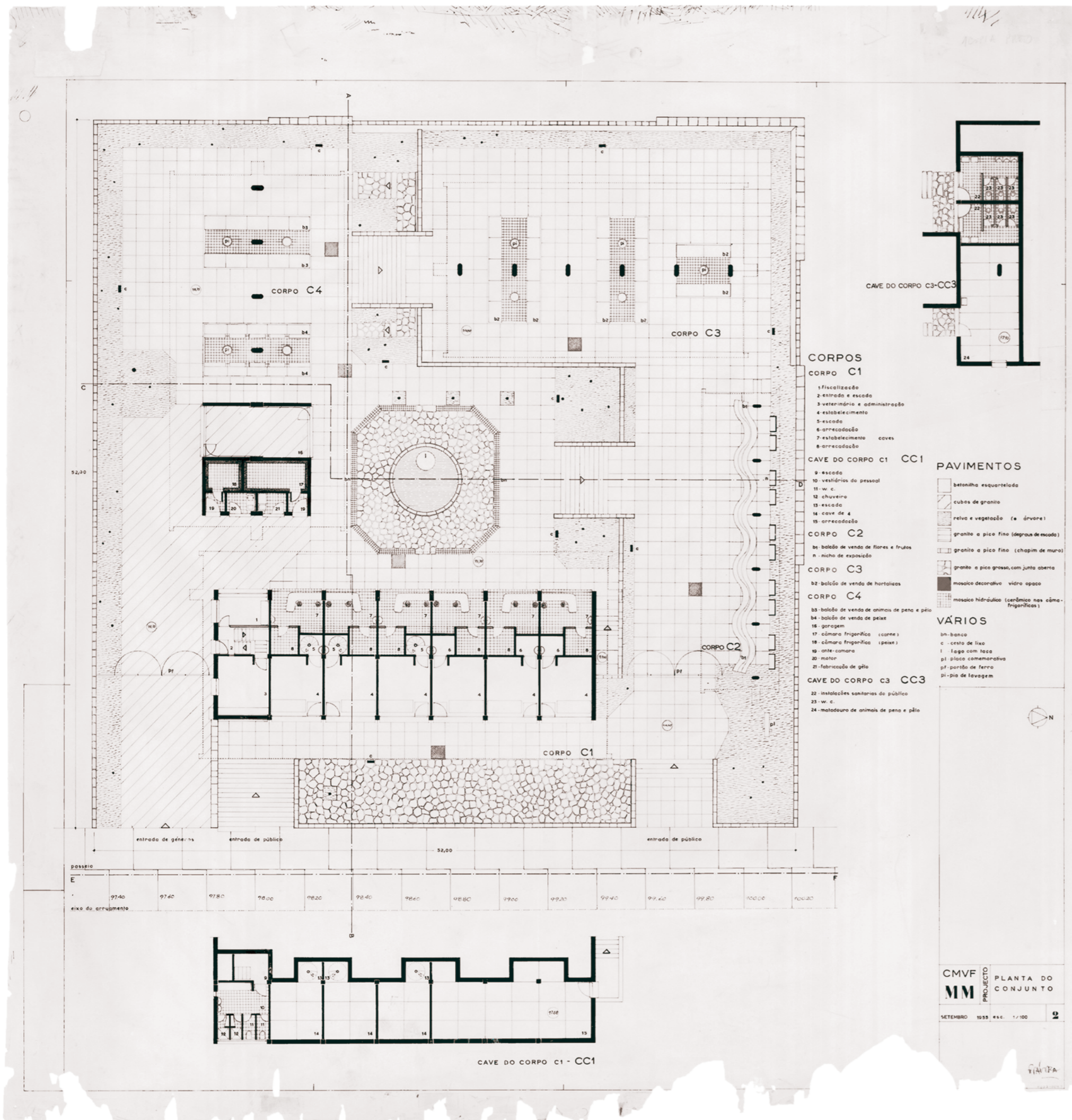
S. Lima

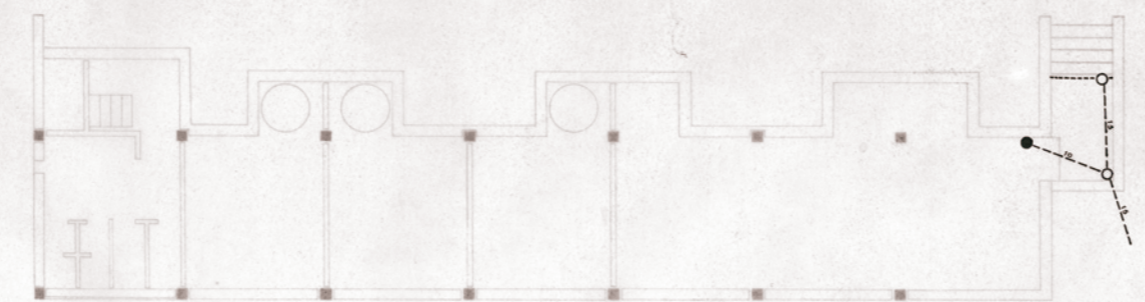
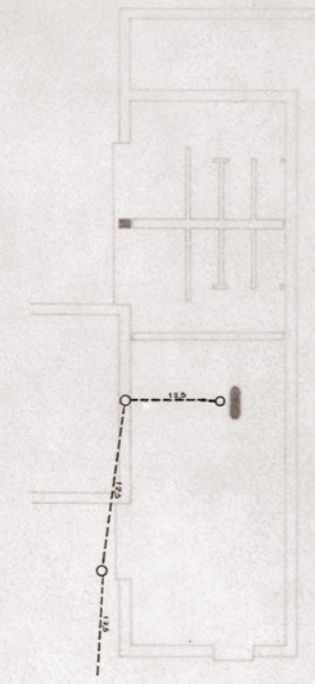
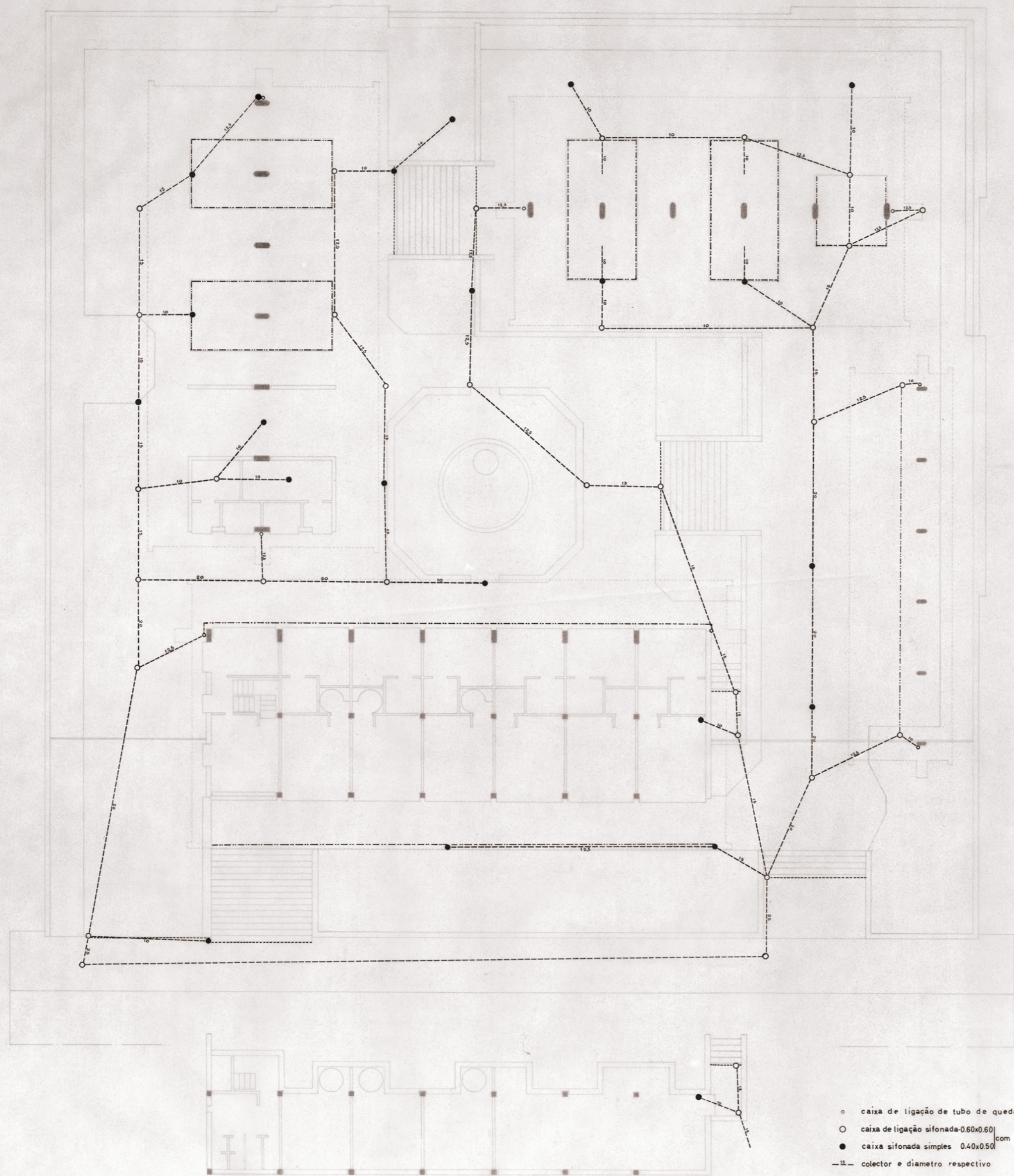


CMVF PROYECTO CORPOC3
 MM CAVE CC3
 PLANTA e CORTE
 SETEMBRO 1955 ESC. 1/50

7

Handwritten signature

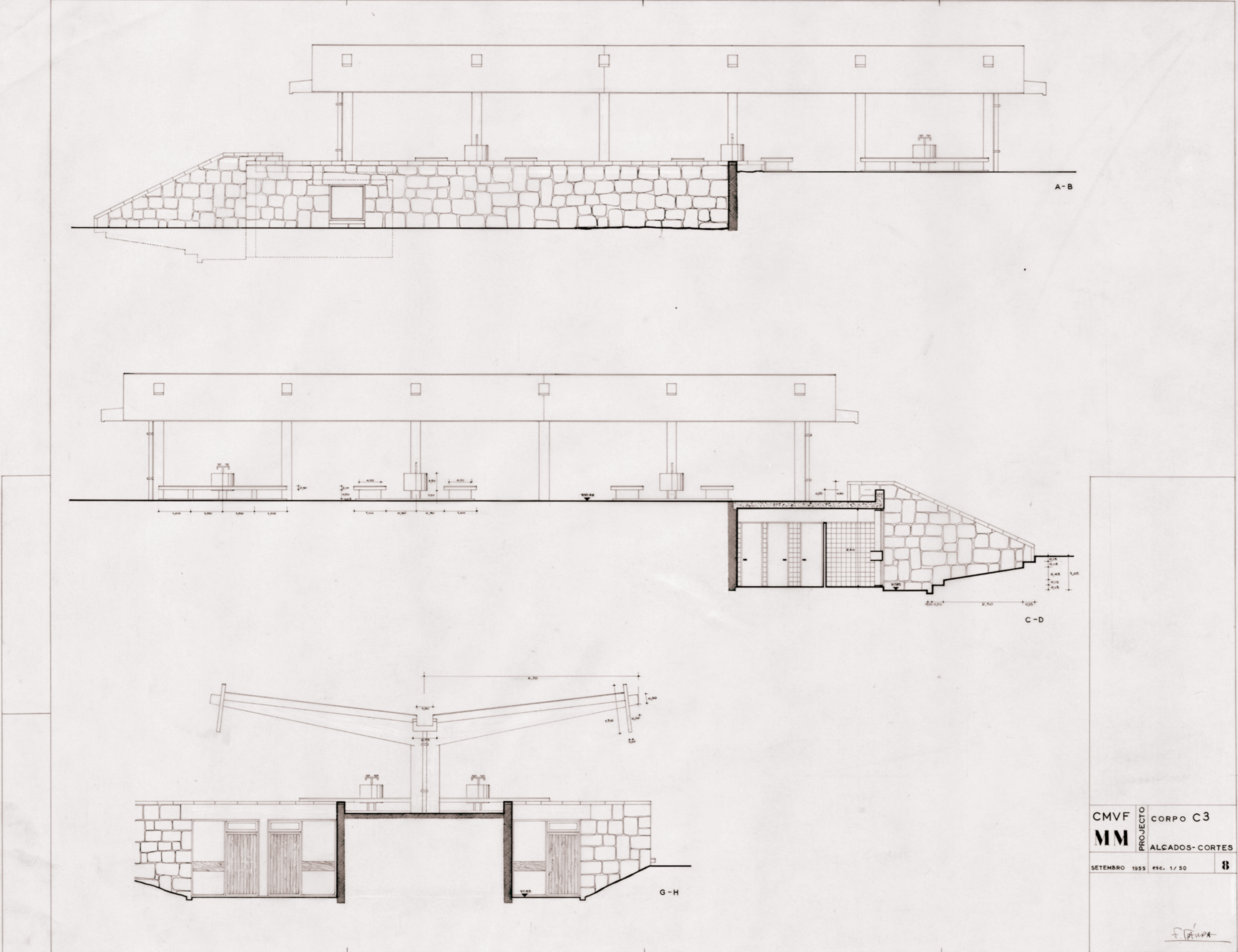




- caixa de ligação de tubo de queda
- caixa de ligação sifonada-0.60x0.60 com grelha de ferro fundido
- caixa sifonada simples 0.40x0.50
- II— colector e diametro respectivo
- valeta rectangular 0.20x0.10
- valeta rectangular com grelha de ferro fundido
- _{0.25} profundidade da soleira relativamente ao pavimento

CMVF
MM
 PROJECTO
**DRENAGEM DAS
 ÁGUAS PLUVIAIS**
 ABRIL 1986 ESC. N.100

19
 1
 f. Alves



CMVF	CORPO C3
PROJECT	ALCADOS-CORTES
MM	
SETEMBRO 1955	ESC. 1/50
	8

F. Silva