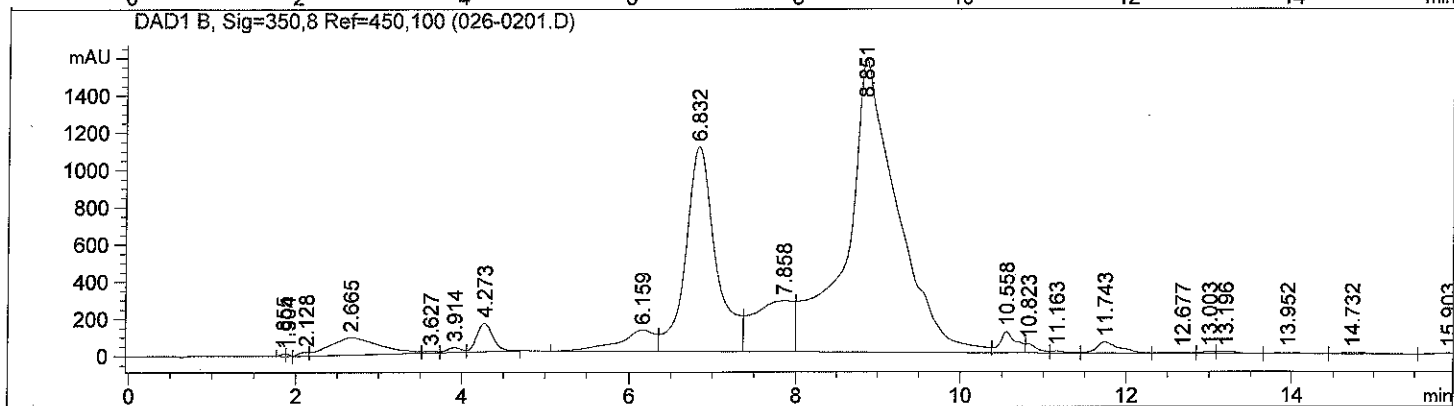
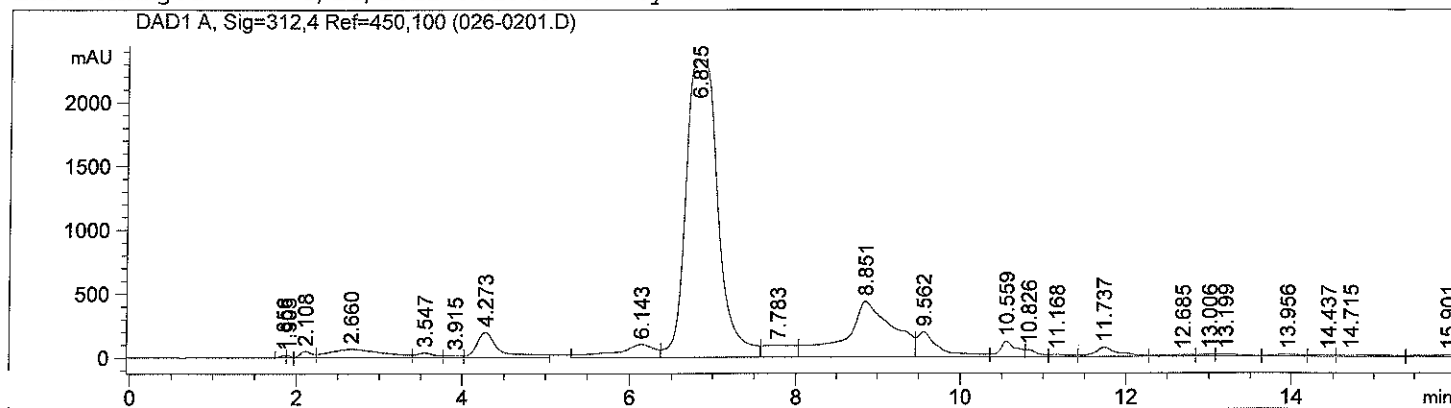


Sample Name: Loreal H2SO4

```

=====
Acq. Operator   : Gr2                      Seq. Line :    2
Acq. Instrument : HPLC1                    Location  : Vial 26
Injection Date  : 4/14/2011 1:11:32 PM     Inj       :    1
                                           Inj Volume: 5.0 µl

Sequence File   : C:\Chem32\1\DATA\Gr9\20110406\20110414OPTIMIZATION3B 2011-04-14 12-52-08\20110414OPTIMIZATION3B.S
Method          : C:\CHEM32\1\DATA\GR9\20110406\20110414OPTIMIZATION3B 2011-04-14 12-52-08\20110413_GRADIENT_D3 FLOW0,3 TEMP45.M (Sequence Method)
Last changed    : 4/14/2011 9:13:32 AM by Gr2
    
```



Area Percent Report

```

Sorted By      :      Signal
Multiplier:    :      1.0000
Dilution:      :      1.0000
Use Multiplier & Dilution Factor with ISTDs
    
```

Signal 1: DAD1 A, Sig=312,4 Ref=450,100

Peak #	RetTime [min]	Type	Width [min]	Area [mAU*s]	Height [mAU]	Area %
1	1.856	BV	0.0674	69.45235	15.76191	0.0669
2	1.905	VV	0.0520	58.13609	16.94416	0.0560
3	2.108	VV	0.1485	519.26257	51.99379	0.5003
4	2.660	VV	0.6059	3086.41626	68.46459	2.9738
5	3.547	VV	0.2250	578.54327	36.87592	0.5574
6	3.915	VV	0.2026	251.95309	18.30114	0.2428
7	4.273	VB	0.2707	3716.49805	198.26485	3.5809
8	6.143	BV	0.4376	3228.61377	101.37807	3.1108
9	6.825	VV	0.4176	6.27780e4	2335.58545	60.4868
10	7.783	VV	0.3818	2401.86304	91.02628	2.3142
11	8.851	VV	0.5113	1.73378e4	432.89487	16.7050

Sample Name: Loreal H2SO4

Peak #	RetTime [min]	Type	Width [min]	Area [mAU*s]	Height [mAU]	Area %
12	9.562	VV	0.2486	3614.49194	194.64740	3.4826
13	10.559	VV	0.1908	1650.54077	119.77939	1.5903
14	10.826	VV	0.1405	518.92981	52.87518	0.5000
15	11.168	VV	0.2145	255.71089	15.99570	0.2464
16	11.737	VV	0.2766	1420.39685	70.04758	1.3686
17	12.685	VV	0.3741	351.49908	12.13053	0.3387
18	13.006	VV	0.1751	201.96561	16.23859	0.1946
19	13.199	VV	0.3141	380.46295	17.33170	0.3666
20	13.956	VV	0.3678	342.61243	13.60380	0.3301
21	14.437	VV	0.2655	233.85129	12.42711	0.2253
22	14.715	VV	0.4934	526.82855	14.18135	0.5076
23	15.901	VBA	0.4005	264.08542	10.99114	0.2544

Totals : 1.03788e5 3917.74048

Signal 2: DAD1 B, Sig=350,8 Ref=450,100

Peak #	RetTime [min]	Type	Width [min]	Area [mAU*s]	Height [mAU]	Area %
1	1.855	BV	0.0669	52.14720	11.94252	0.0440
2	1.904	VV	0.0500	40.22249	12.35875	0.0340
3	2.128	VV	0.1415	174.07809	20.83744	0.1470
4	2.665	VV	0.6235	3949.19385	94.12775	3.3340
5	3.627	VV	0.1573	120.44639	11.21236	0.1017
6	3.914	VV	0.1837	317.34518	26.87828	0.2679
7	4.273	VB	0.2063	2021.85632	152.86369	1.7069
8	6.159	BV	0.4177	3476.76514	115.34007	2.9352
9	6.832	VV	0.3705	2.77867e4	1100.94055	23.4581
10	7.858	VV	0.4814	9105.84961	272.79361	7.6874
11	8.851	VV	0.5481	6.74261e4	1572.95471	56.9225
12	10.558	VV	0.1931	1575.54907	112.68562	1.3301
13	10.823	VV	0.1314	423.23862	46.85064	0.3573
14	11.163	VV	0.1731	117.80012	9.47234	0.0994
15	11.743	VV	0.2646	1110.53040	59.25853	0.9375
16	12.677	VV	0.3051	107.96989	4.68032	0.0912
17	13.003	VV	0.1616	98.42336	8.72408	0.0831
18	13.196	VV	0.2416	154.24567	9.79920	0.1302
19	13.952	VV	0.3488	170.18950	7.33080	0.1437
20	14.732	VV	0.3968	218.15392	7.69315	0.1842
21	15.903	VBA	0.0717	5.63807	1.31072	4.760e-3

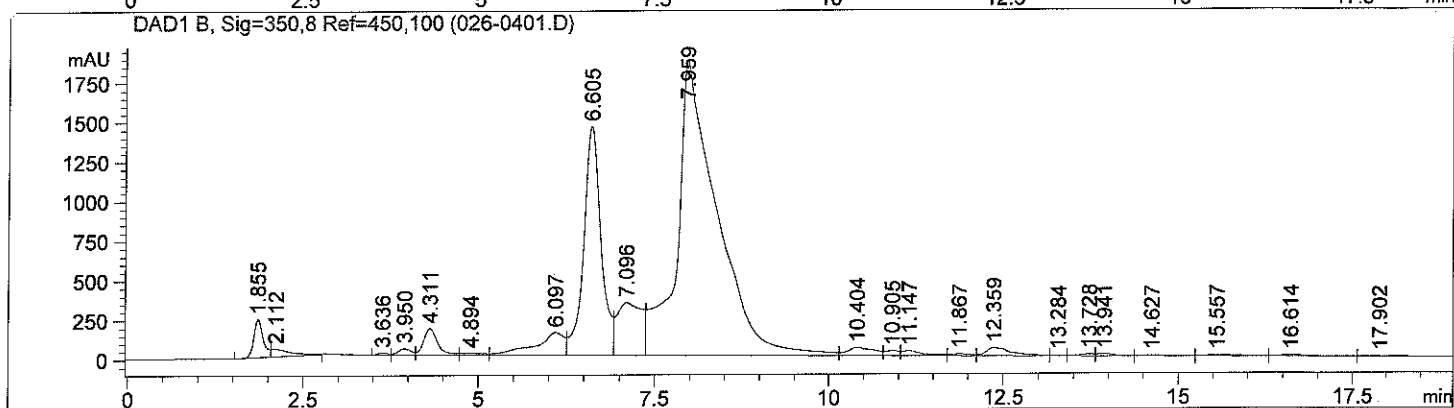
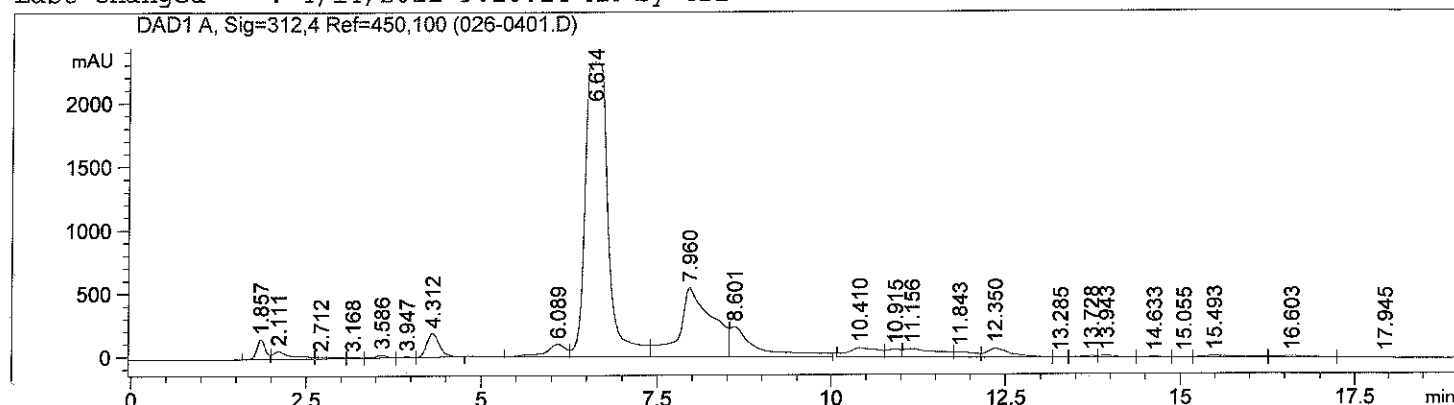
Totals : 1.18452e5 3660.05515

=====
 *** End of Report ***

```

=====
Acq. Operator   : Gr2                      Seq. Line :    4
Acq. Instrument : HPLC1                    Location  : Vial 26
Injection Date  : 4/14/2011 1:50:28 PM     Inj       :    1
                                           Inj Volume: 5.0 µl

Sequence File   : C:\Chem32\1\DATA\Gr9\20110406\20110414OPTIMIZATION3B 2011-04-14 12-52-08\20110414OPTIMIZATION3B.S
Method          : C:\CHEM32\1\DATA\GR9\20110406\20110414OPTIMIZATION3B 2011-04-14 12-52-08\20110413_GRADIENT_D4 FLOW0,3 TEMP45.M (Sequence Method)
Last changed    : 4/14/2011 9:20:14 AM by Gr2
  
```



=====
 Area Percent Report
 =====

```

Sorted By      :      Signal
Multiplier:    :      1.0000
Dilution:      :      1.0000
Use Multiplier & Dilution Factor with ISTDs
  
```

Signal 1: DAD1 A, Sig=312,4 Ref=450,100

Peak #	RetTime [min]	Type	Width [min]	Area [mAU*s]	Height [mAU]	Area %
1	1.857	BV	0.1325	1340.98938	155.65311	1.4391
2	2.111	VV	0.2432	1145.31616	63.25262	1.2291
3	2.712	VV	0.3098	312.03931	14.45818	0.3349
4	3.168	VV	0.1915	95.79330	7.37615	0.1028
5	3.586	VV	0.1689	252.27232	22.83645	0.2707
6	3.947	VV	0.1516	54.79254	5.94263	0.0588
7	4.312	VB	0.2022	2431.28564	186.38739	2.6092
8	6.089	BV	0.2901	2033.58325	100.49325	2.1824
9	6.614	VV	0.2685	5.14436e4	2321.57813	55.2077
10	7.960	VV	0.4188	1.79032e4	545.67810	19.2131
11	8.601	VB	0.3591	6417.96729	236.12300	6.8876

Sample Name: Loreal H2SO4

Peak #	RetTime [min]	Type	Width [min]	Area [mAU*s]	Height [mAU]	Area %
12	10.410	BV	0.3992	2203.20068	72.78082	2.3644
13	10.915	VV	0.1995	860.43494	61.41424	0.9234
14	11.156	VV	0.4441	2224.43555	65.84875	2.3872
15	11.843	VV	0.2776	856.61914	42.05914	0.9193
16	12.350	VB	0.3292	1668.53125	68.73086	1.7906
17	13.285	BV	0.1863	50.22231	3.89934	0.0539
18	13.728	VV	0.2129	181.72278	11.59189	0.1950
19	13.943	VV	0.2528	208.76237	12.76763	0.2240
20	14.633	VV	0.2763	108.94114	6.22150	0.1169
21	15.055	VV	0.2251	54.58988	3.63797	0.0586
22	15.493	VV	0.4867	473.37082	13.44537	0.5080
23	16.603	VV	0.4721	378.92801	10.99325	0.4067
24	17.945	VBA	0.8644	481.38754	7.92812	0.5166

Totals : 9.31819e4 4041.09787

Signal 2: DAD1 B, Sig=350,8 Ref=450,100

Peak #	RetTime [min]	Type	Width [min]	Area [mAU*s]	Height [mAU]	Area %
1	1.855	BV	0.1389	2192.09570	239.27574	1.7871
2	2.112	VB	0.2716	959.17249	47.50449	0.7820
3	3.636	BV	0.1391	109.68229	11.95045	0.0894
4	3.950	VV	0.1953	498.31845	39.46057	0.4063
5	4.311	VB	0.2101	2308.58301	166.15720	1.8821
6	4.894	BV	0.3385	263.74854	11.29230	0.2150
7	6.097	VV	0.3843	4061.25000	143.44354	3.3109
8	6.605	VV	0.2511	2.44605e4	1447.50806	19.9412
9	7.096	VV	0.3364	8227.84668	332.79971	6.7077
10	7.959	VV	0.5065	7.43027e4	1866.29431	60.5747
11	10.404	VV	0.3503	1338.65894	51.32566	1.0913
12	10.905	VV	0.1904	406.19507	30.68509	0.3311
13	11.147	VV	0.2900	629.77063	30.36345	0.5134
14	11.867	VV	0.2613	210.29643	11.08658	0.1714
15	12.359	VB	0.3370	1255.88147	50.00418	1.0238
16	13.284	BV	0.1992	55.84726	4.04160	0.0455
17	13.728	VV	0.2164	175.45367	11.10007	0.1430
18	13.941	VV	0.2506	197.01773	12.05731	0.1606
19	14.627	VB	0.3622	137.35881	5.55994	0.1120
20	15.557	BV	0.4831	300.27945	8.39825	0.2448
21	16.614	VB	0.4790	320.75851	9.06196	0.2615
22	17.902	BBA	0.6782	251.62573	5.14817	0.2051

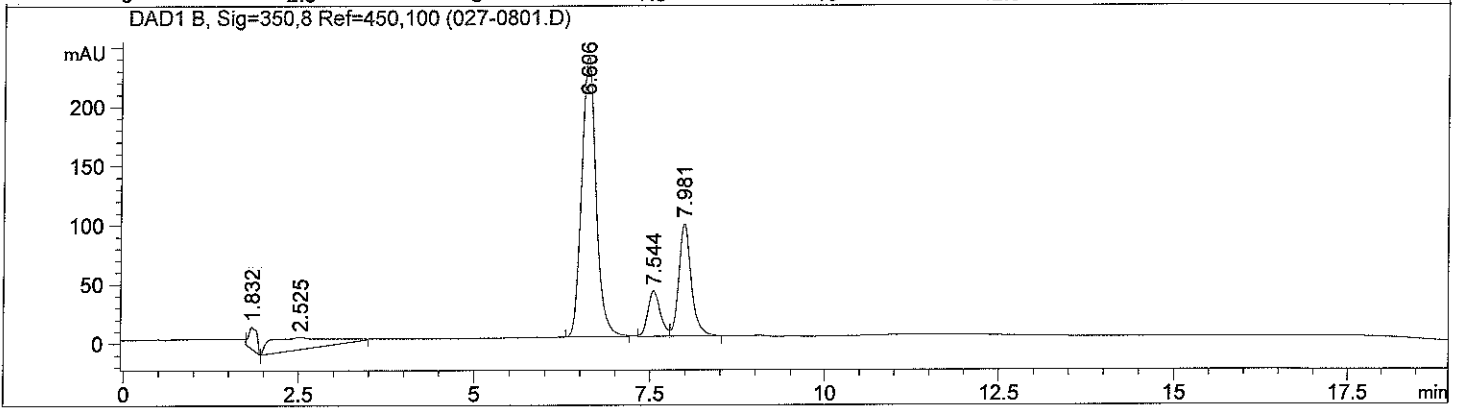
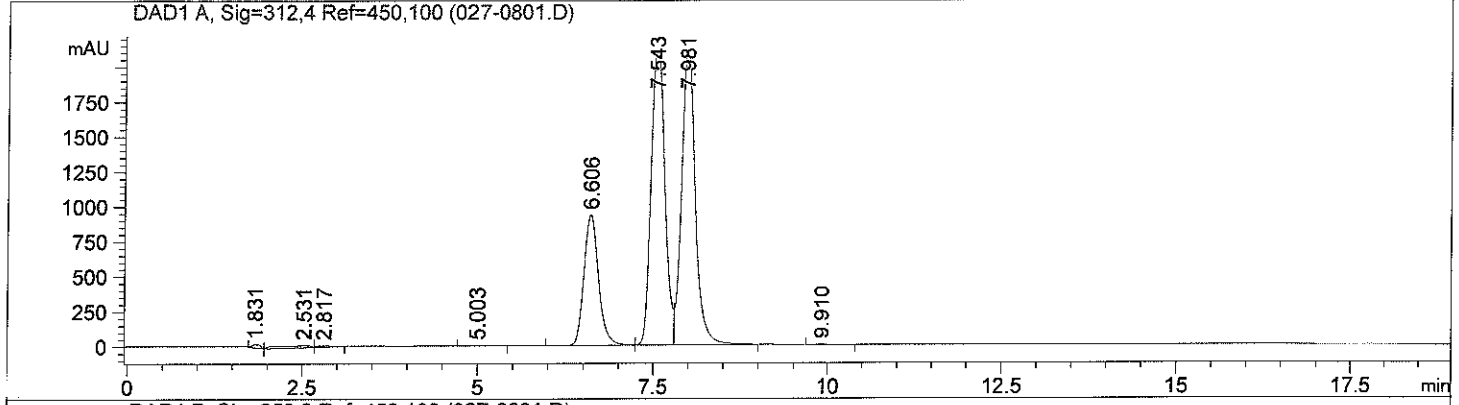
Totals : 1.22663e5 4534.51862

*** End of Report ***

```

=====
Acq. Operator   : Gr2                      Seq. Line :    8
Acq. Instrument : HPLC1                   Location  : Vial 27
Injection Date  : 4/14/2011 11:48:12 AM   Inj       :    1
                                           Inj Volume: 5.0 µl

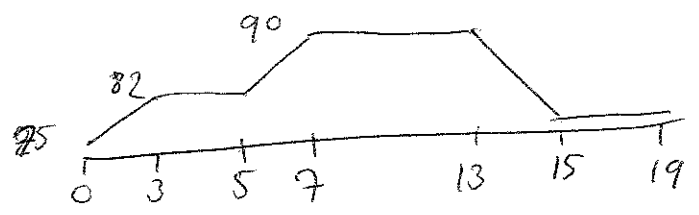
Sequence File   : C:\Chem32\1\DATA\Gr2\20110414\20110414OPTIMIZATION3 2011-04-14 09-26-09\20110414OPTIMIZATION3.S
Method          : C:\CHEM32\1\DATA\GR2\20110414\20110414OPTIMIZATION3 2011-04-14 09-26-09\20110413_GRADIENT_D4 FLOW0,3 TEMP45.M (Sequence Method)
Last changed    : 4/14/2011 9:20:14 AM by Gr2
  
```



=====
 Area Percent Report
 =====

```

Sorted By      : Signal
Multiplier:    : 1.0000
Dilution:      : 1.0000
Use Multiplier & Dilution Factor with ISTDs
  
```



Signal 1: DAD1 A, Sig=312,4 Ref=450,100

Peak #	RetTime [min]	Type	Width [min]	Area [mAU*s]	Height [mAU]	Area %
1	1.831	BV	0.1173	198.94482	22.92137	0.2750
2	2.531	VV	0.4634	521.58875	14.44161	0.7210
3	2.817	VB	0.2291	154.48944	9.52951	0.2136
4	5.003	BB	0.2218	36.22847	2.57986	0.0501
5	6.606	BV	0.2180	1.32679e4	932.42529	18.3407
6	7.543	VV	0.2162	2.89236e4	2106.94800	39.9822
7	7.981	VB	0.2150	2.92041e4	2089.86768	40.3699
8	9.910	BB	0.1964	34.46775	2.70977	0.0476

Totals : 7.23413e4 5181.42309

Signal 2: DAD1 B, Sig=350,8 Ref=450,100

Peak #	RetTime [min]	Type	Width [min]	Area [mAU*s]	Height [mAU]	Area %
1	1.832	BV	0.1161	160.81473	18.74688	2.7445
2	2.525	VB	0.7631	649.88715	10.51480	11.0910
3	6.606	BB	0.2176	3370.05103	237.37584	57.5132
4	7.544	BV	0.1902	482.99365	38.55515	8.2428
5	7.981	VB	0.1903	1195.86426	95.36628	20.4086

Totals : 5859.61081 400.55894

=====
*** End of Report ***

Sample Name: octocrylene, padimate O, 2-ethyl 1:1000

Signal 2: DAD1 B, Sig=350,8 Ref=450,100

Peak #	RetTime [min]	Type	Width [min]	Area [mAU*s]	Height [mAU]	Area %
1	1.823	BV	0.1153	158.54730	19.00194	2.7832
2	2.368	VB	0.5767	511.11212	11.02856	8.9722
3	5.182	BB	0.2342	3354.55981	222.15994	58.8869
4	6.238	BV	0.2142	464.46680	33.82521	8.1534
5	6.672	VB	0.2252	1207.92737	81.36525	21.2043

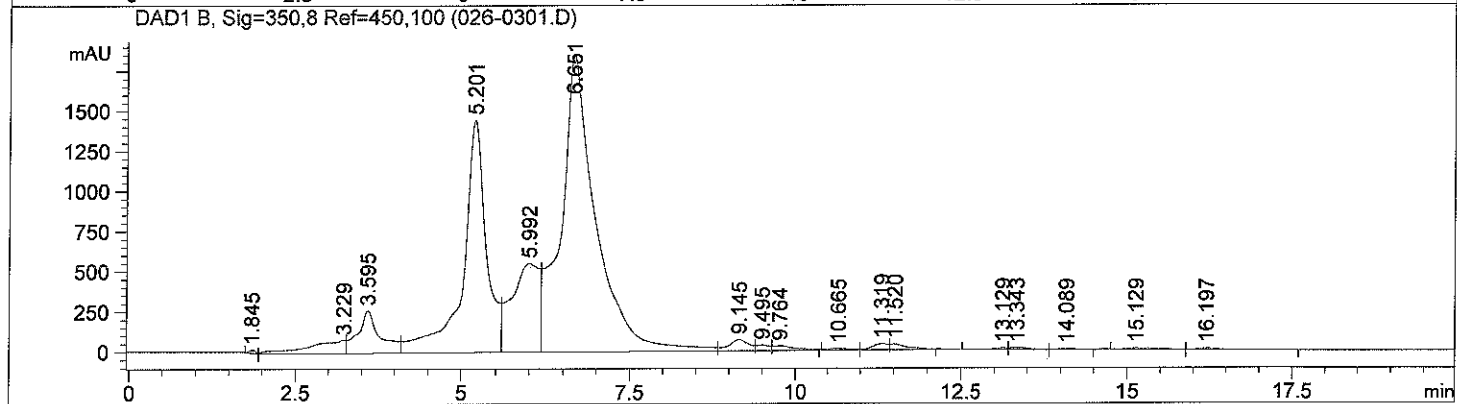
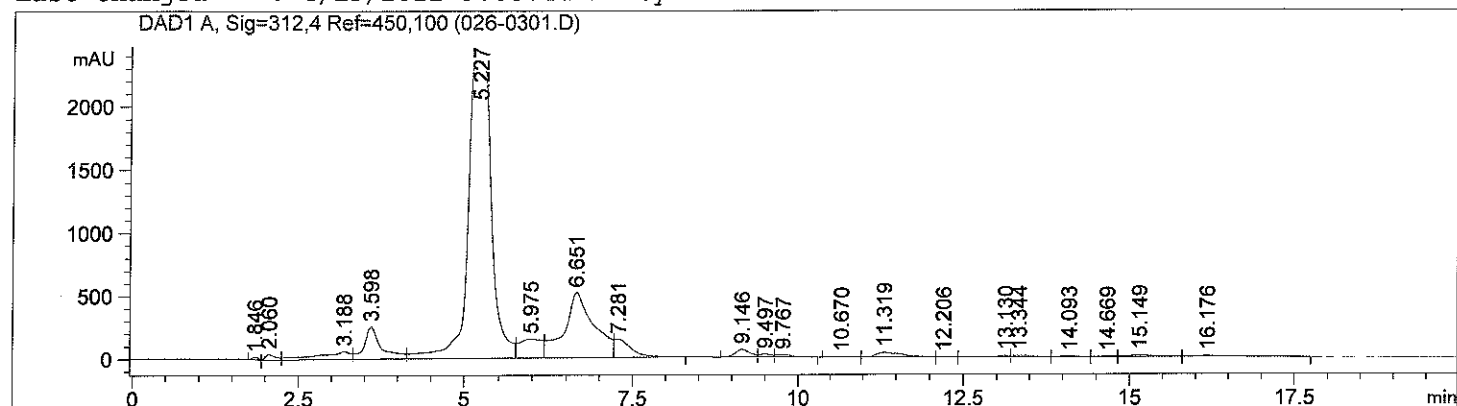
Totals : 5696.61340 367.38090

=====
*** End of Report ***


```

=====
Acq. Operator   : Gr2                      Seq. Line :    3
Acq. Instrument : HPLC1                    Location  : Vial 26
Injection Date  : 4/14/2011 10:11:24 AM   Inj       :    1
                                           Inj Volume: 5.0 µl

Sequence File   : C:\Chem32\1\DATA\Gr2\20110414\20110414OPTIMIZATION3 2011-04-14 09-26-
09\20110414OPTIMIZATION3.S
Method          : C:\CHEM32\1\DATA\GR2\20110414\20110414OPTIMIZATION3 2011-04-14 09-26-
09\20110413_GRADIENT_D2 FLOW0,3 TEMP45.M (Sequence Method)
Last changed    : 4/13/2011 3:05:44 PM by Gr2
  
```



=====
 Area Percent Report
 =====

```

Sorted By           :      Signal
Multiplier:         :      1.0000
Dilution:           :      1.0000
Use Multiplier & Dilution Factor with ISTDs
  
```

Signal 1: DAD1 A, Sig=312,4 Ref=450,100

Peak #	RetTime [min]	Type	Width [min]	Area [mAU*s]	Height [mAU]	Area %
1	1.846	BV	0.0966	143.33626	20.23776	0.1577
2	2.060	VV	0.1532	501.55954	47.48154	0.5519
3	3.188	VV	0.4542	2289.68555	63.56625	2.5195
4	3.598	VV	0.2544	4770.43750	259.55667	5.2492
5	5.227	VV	0.3226	5.62617e4	2356.27173	61.9083
6	5.975	VV	0.3437	3686.32397	153.78427	4.0563
7	6.651	VV	0.4115	1.62036e4	520.08466	17.8299
8	7.281	VB	0.2639	2720.73706	147.00845	2.9938
9	9.146	BV	0.2379	951.01331	59.68790	1.0465
10	9.497	VV	0.1893	298.42294	23.01655	0.3284
11	9.767	VB	0.2440	315.25333	19.77062	0.3469

Sample Name: Loreal H2SO4

Peak #	RetTime [min]	Type	Width [min]	Area [mAU*s]	Height [mAU]	Area %
12	10.670	BV	0.2462	59.78788	3.62920	0.0658
13	11.319	VV	0.3812	1051.84290	37.96940	1.1574
14	12.206	VV	0.2346	41.83482	2.58767	0.0460
15	13.130	VV	0.2759	249.37375	12.23058	0.2744
16	13.344	VV	0.3146	281.49487	13.31923	0.3097
17	14.093	VV	0.3226	149.16441	7.11418	0.1641
18	14.669	VV	0.2802	88.62614	4.53168	0.0975
19	15.149	VV	0.4248	465.89758	15.40638	0.5127
20	16.176	VB	0.4489	349.01743	10.92071	0.3840

Totals : 9.08792e4 3778.17544

Signal 2: DAD1 B, Sig=350,8 Ref=450,100

Peak #	RetTime [min]	Type	Width [min]	Area [mAU*s]	Height [mAU]	Area %
1	1.845	BV	0.1174	132.87369	18.15189	0.1014
2	3.229	VV	0.4729	3070.65747	79.79774	2.3428
3	3.595	VV	0.3119	6103.15674	261.90955	4.6566
4	5.201	VV	0.3326	3.40572e4	1446.75171	25.9847
5	5.992	VV	0.4024	1.58652e4	550.21704	12.1048
6	6.651	VV	0.4769	6.69901e4	1847.96460	51.1117
7	9.145	VV	0.2875	1383.15430	68.53352	1.0553
8	9.495	VV	0.1959	439.03650	32.44640	0.3350
9	9.764	VB	0.3263	632.34869	27.49852	0.4825
10	10.665	BV	0.3702	207.98476	7.67326	0.1587
11	11.319	VV	0.2417	582.84631	36.61972	0.4447
12	11.520	VB	0.2469	593.82117	33.16605	0.4531
13	13.129	BV	0.2182	146.85101	9.51005	0.1120
14	13.343	VV	0.2930	206.22415	10.69136	0.1573
15	14.089	VV	0.3011	108.51327	5.57434	0.0828
16	15.129	BV	0.5102	327.41937	8.56123	0.2498
17	16.197	VB	0.3712	218.68797	8.41557	0.1669

Totals : 1.31066e5 4453.48254

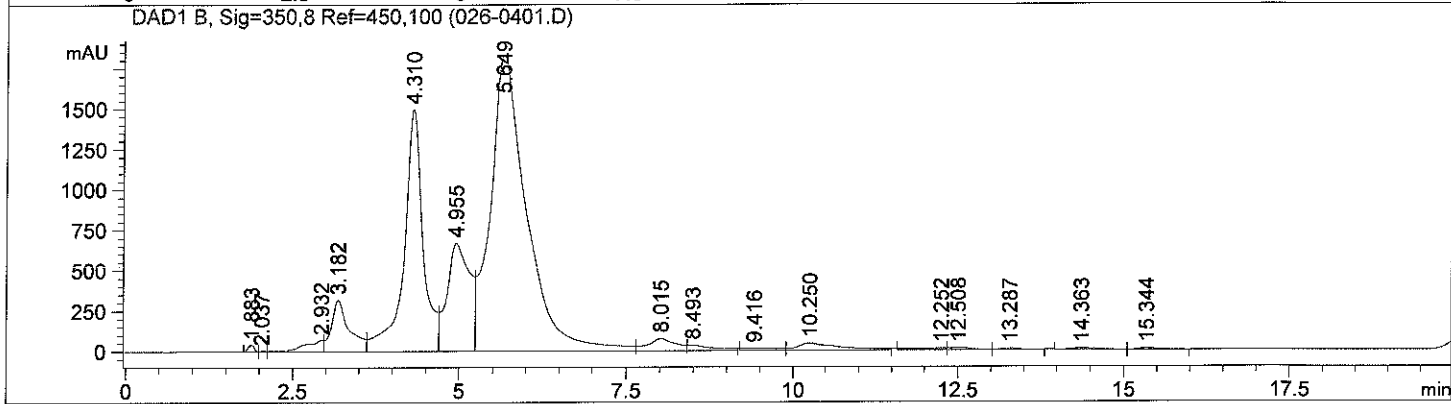
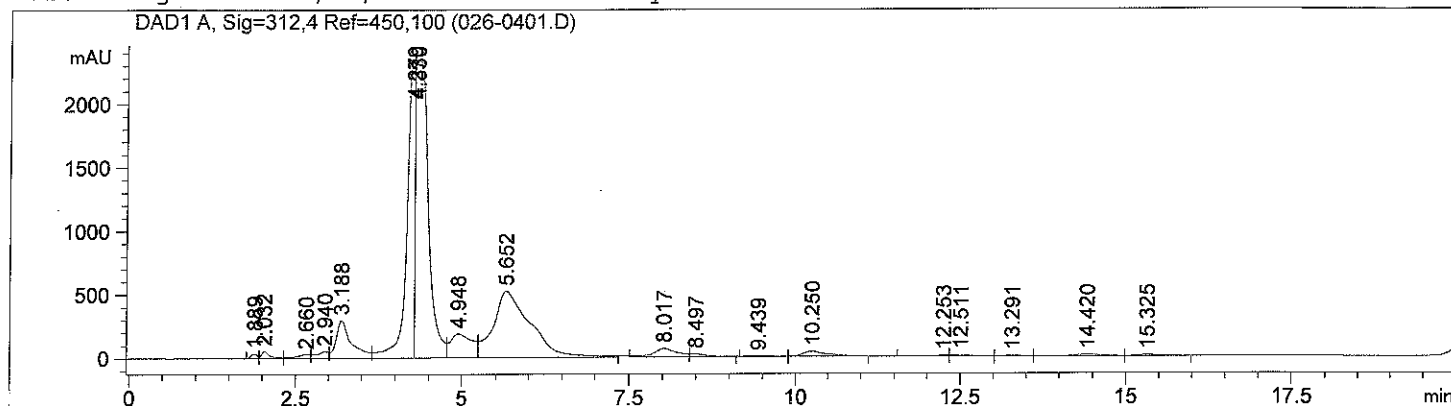
=====
 *** End of Report ***

start 80% MeOH

```

=====
Acq. Operator   : Gr2                      Seq. Line :    4
Acq. Instrument : HPLC1                   Location  : Vial 26
Injection Date  : 4/13/2011 12:46:03 PM   Inj       :    1
                                           Inj Volume: 5.0 µl

Sequence File   : C:\Chem32\1\DATA\Gr9\20110406\20110413OPTIMIZATION2 2011-04-13 10-43-06\20110413OPTIMIZATION2.S
Method          : C:\CHEM32\1\DATA\GR9\20110406\20110413OPTIMIZATION2 2011-04-13 10-43-06\20110330_GRADIENT_E FLOW3 TEMP45.M (Sequence Method)
Last changed    : 4/13/2011 9:57:46 AM by Gr2
  
```



=====
 Area Percent Report
 =====

```

Sorted By      :      Signal
Multiplier:    :      1.0000
Dilution:      :      1.0000
Use Multiplier & Dilution Factor with ISTDs
  
```

Signal 1: DAD1 A, Sig=312,4 Ref=450,100

Peak #	RetTime [min]	Type	Width [min]	Area [mAU*s]	Height [mAU]	Area %
1	1.889	BV	0.1050	219.46127	34.14536	0.2553
2	2.032	VB	0.1312	488.38794	54.17013	0.5682
3	2.660	BV	0.2103	434.36884	29.07854	0.5054
4	2.940	VV	0.1713	658.95850	52.91137	0.7667
5	3.188	VV	0.2252	4737.88867	295.24399	5.5124
6	4.279	VV	0.1266	1.97957e4	2341.55298	23.0315
7	4.330	VV	0.1682	3.09909e4	2345.25391	36.0567
8	4.948	VV	0.3099	4239.57178	188.82785	4.9326
9	5.652	VB	0.5161	2.01773e4	520.72314	23.4755
10	8.017	BV	0.3410	1642.61865	66.77440	1.9111
11	8.497	VB	0.2768	402.43814	21.26159	0.4682

Sample Name: Loreal H2SO4

Peak #	RetTime [min]	Type	Width [min]	Area [mAU*s]	Height [mAU]	Area %
12	9.439	BV	0.3689	76.76161	2.88049	0.0893
13	10.250	VB	0.3760	1011.01727	38.80239	1.1763
14	12.253	BV	0.2534	156.04485	8.45051	0.1816
15	12.511	VV	0.3233	218.88110	10.40935	0.2547
16	13.291	VV	0.2812	123.93921	7.11725	0.1442
17	14.420	VV	0.4185	370.20749	12.68593	0.4307
18	15.325	VV	0.2938	205.92462	10.36514	0.2396

Totals : 8.59503e4 6040.65431

Signal 2: DAD1 B, Sig=350,8 Ref=450,100

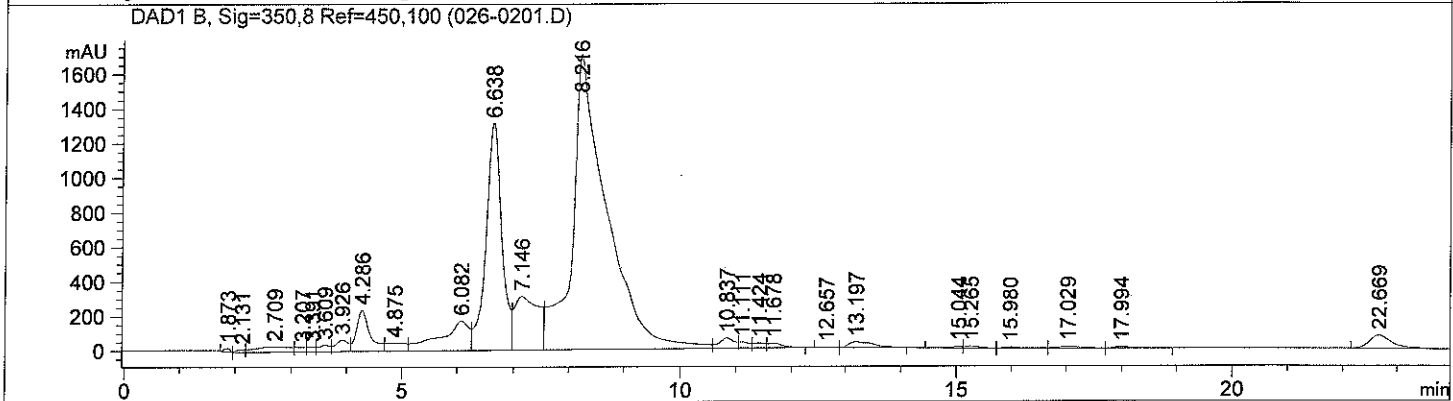
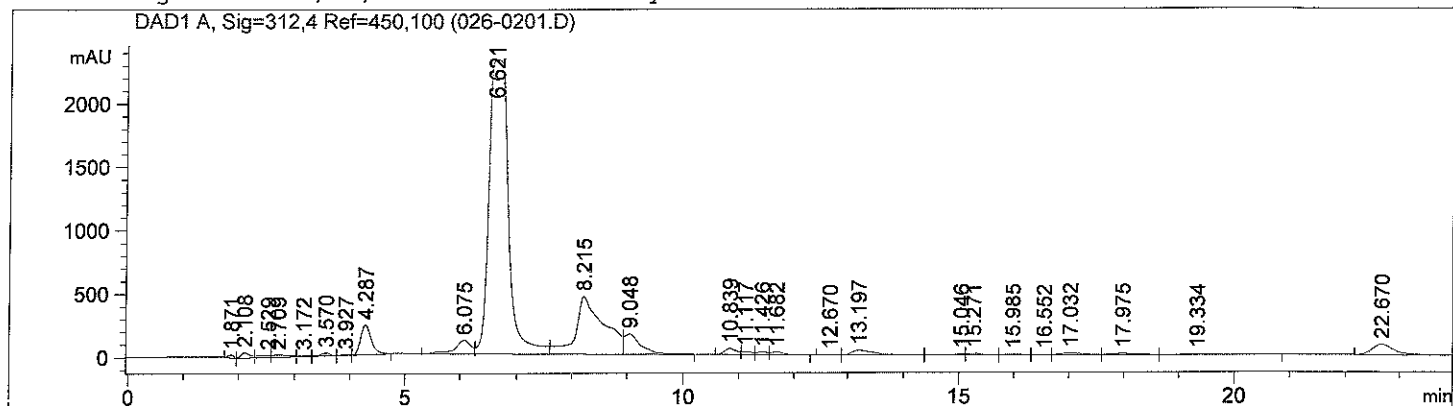
Peak #	RetTime [min]	Type	Width [min]	Area [mAU*s]	Height [mAU]	Area %
1	1.883	BV	0.1066	261.49390	39.84678	0.2046
2	2.037	VV	0.1017	28.48048	4.06552	0.0223
3	2.932	VV	0.2506	1358.37488	68.71080	1.0630
4	3.182	VV	0.2583	5920.16650	316.41196	4.6329
5	4.310	VV	0.2855	2.96710e4	1495.19690	23.2196
6	4.955	VV	0.3273	1.58483e4	666.85754	12.4023
7	5.649	VV	0.5196	6.86870e4	1831.30981	53.7522
8	8.015	VV	0.3775	2050.04199	73.47480	1.6043
9	8.493	VB	0.3738	819.52802	30.08559	0.6413
10	9.416	BV	0.4891	407.75821	11.13846	0.3191
11	10.250	VB	0.5382	1708.34314	42.20379	1.3369
12	12.252	BV	0.3797	290.34235	9.97164	0.2272
13	12.508	VV	0.3329	244.14839	11.08616	0.1911
14	13.287	VB	0.2778	111.26930	6.49844	0.0871
15	14.363	BV	0.4601	211.07614	6.99457	0.1652
16	15.344	VB	0.2997	167.25272	8.07396	0.1309

Totals : 1.27784e5 4621.92672

*** End of Report ***

Start 75 MeOH

=====
 Acq. Operator : Gr2 Seq. Line : 2
 Acq. Instrument : HPLC1 Location : Vial 26
 Injection Date : 4/13/2011 11:36:19 AM Inj : 1
 Inj Volume : 5.0 µl
 Sequence File : C:\Chem32\1\DATA\Gr9\20110406\20110413OPTIMIZATION2 2011-04-13 10-43-06\20110413OPTIMIZATION2.S
 Method : C:\CHEM32\1\DATA\GR9\20110406\20110413OPTIMIZATION2 2011-04-13 10-43-06\20110413_GRADIENT_D FLOW0,3 TEMP45.M (Sequence Method)
 Last changed : 4/13/2011 9:56:45 AM by Gr2



=====
 Area Percent Report
 =====

Sorted By : Signal
 Multiplier: : 1.0000
 Dilution: : 1.0000
 Use Multiplier & Dilution Factor with ISTDs

Signal 1: DAD1 A, Sig=312,4 Ref=450,100

Peak #	RetTime [min]	Type	Width [min]	Area [mAU*s]	Height [mAU]	Area %
1	1.871	BV	0.1180	171.28845	23.77650	0.1951
2	2.108	VV	0.1671	486.68729	42.65997	0.5543
3	2.529	VV	0.2277	314.38132	18.74604	0.3581
4	2.709	VV	0.3212	402.96735	17.86158	0.4590
5	3.172	VV	0.2074	140.31735	9.66310	0.1598
6	3.570	VV	0.1807	284.99823	23.63401	0.3246
7	3.927	VV	0.1653	69.96808	6.72718	0.0797
8	4.287	VB	0.2056	3120.72241	233.96735	3.5545
9	6.075	BV	0.2990	2249.77466	108.91817	2.5625
10	6.621	VV	0.3157	5.44975e4	2323.28833	62.0734
11	8.215	VV	0.4604	1.61992e4	453.89200	18.4511

Sample Name: Loreal H2SO4

Peak #	RetTime [min]	Type	Width [min]	Area [mAU*s]	Height [mAU]	Area %
12	9.048	VB	0.2966	3381.06592	159.98024	3.8511
13	10.839	BV	0.2191	705.17273	47.51994	0.8032
14	11.117	VV	0.1905	309.24210	23.97338	0.3522
15	11.426	VV	0.1934	289.04633	21.70529	0.3292
16	11.682	VB	0.2438	324.68613	20.39214	0.3698
17	12.670	BV	0.2240	26.34304	1.87402	0.0300
18	13.197	VV	0.3793	1005.00189	37.18203	1.1447
19	15.046	VV	0.2535	183.17451	9.73771	0.2086
20	15.271	VV	0.2918	221.15373	11.52806	0.2519
21	15.985	VV	0.2819	136.13493	7.78978	0.1551
22	16.552	VV	0.2399	48.07099	2.89163	0.0548
23	17.032	VV	0.3806	362.01599	13.86431	0.4123
24	17.975	VV	0.3448	251.58163	10.45231	0.2866
25	19.334	VB	0.6253	204.80206	4.48025	0.2333
26	22.670	BBA	0.4366	2409.93774	82.53970	2.7450

Totals : 8.77952e4 3719.04501

Signal 2: DAD1 B, Sig=350,8 Ref=450,100

Peak #	RetTime [min]	Type	Width [min]	Area [mAU*s]	Height [mAU]	Area %
1	1.873	BV	0.1168	145.52663	20.01295	0.1121
2	2.131	VV	0.1748	151.35493	14.61168	0.1166
3	2.709	VV	0.6374	1268.80786	29.29136	0.9774
4	3.207	VV	0.1911	336.05801	25.61221	0.2589
5	3.391	VV	0.1439	259.05002	25.63045	0.1995
6	3.609	VV	0.1943	533.71735	37.89033	0.4111
7	3.926	VV	0.2337	1051.76440	66.07745	0.8102
8	4.286	VV	0.2467	3989.86475	236.69641	3.0734
9	4.875	VV	0.3673	1139.24622	45.31073	0.8776
10	6.082	VV	0.4799	6185.64160	171.04202	4.7648
11	6.638	VV	0.2808	2.48612e4	1313.72571	19.1505
12	7.146	VV	0.4087	9475.35742	309.88922	7.2988
13	8.216	VV	0.5537	7.39588e4	1706.33752	56.9703
14	10.837	VV	0.2638	1085.55457	58.14648	0.8362
15	11.111	VV	0.1908	440.10953	33.60903	0.3390
16	11.424	VV	0.1993	393.82193	28.12939	0.3034
17	11.678	VB	0.2745	459.72037	24.54791	0.3541
18	12.657	BV	0.2170	20.19072	1.55987	0.0156
19	13.197	VB	0.4104	1003.05109	33.39717	0.7726
20	15.044	BV	0.2260	137.79436	8.37303	0.1061
21	15.265	VV	0.2850	192.11060	10.23502	0.1480
22	15.980	VB	0.3088	138.70540	6.95196	0.1068
23	17.029	BV	0.4556	247.30843	8.11411	0.1905
24	17.994	VV	0.3039	164.90753	7.95219	0.1270
25	22.669	BBA	0.4328	2180.33936	75.52560	1.6795

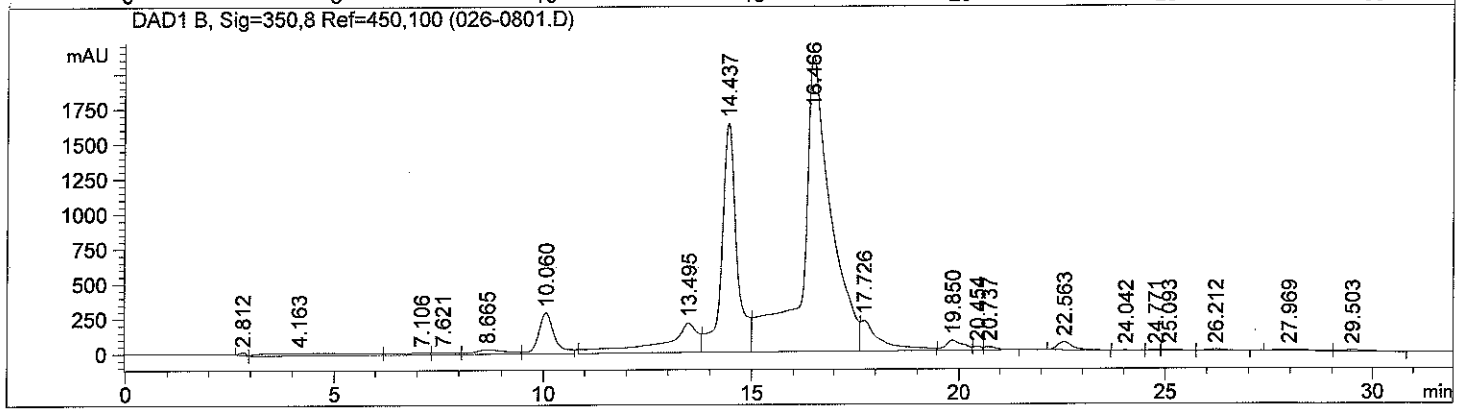
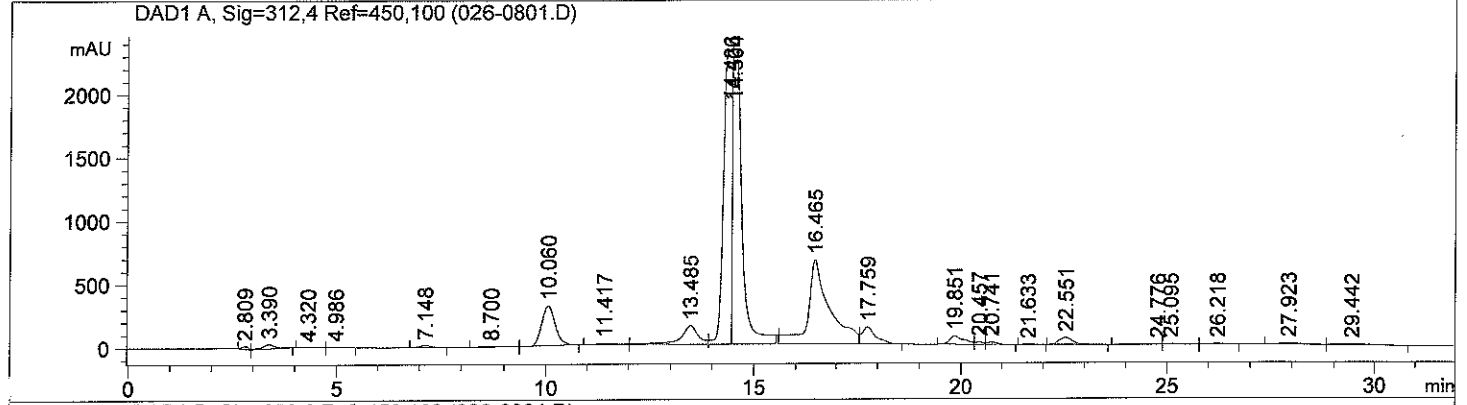
Totals : 1.29820e5 4298.66982

*** End of Report ***

```

=====
Acq. Operator   : Gr2                               Seq. Line :    8
Acq. Instrument : HPLC1                             Location  : Vial 26
Injection Date  : 4/12/2011 7:28:18 PM             Inj       :    1
                                                    Inj Volume: 5.0 µl

Sequence File   : C:\Chem32\1\DATA\Gr2\20110412optimization\20110412OPTIMIZATION 2011-04-
                12 15-29-36\20110412OPTIMIZATION.S
Method          : C:\CHEM32\1\DATA\GR2\20110412OPTIMIZATION\20110412OPTIMIZATION 2011-04-
                12 15-29-36\20110330_GRADIENT_C.M (Sequence Method)
Last changed    : 3/30/2011 3:38:55 PM by Gr2
  
```



=====
 Area Percent Report
 =====

```

Sorted By      :      Signal
Multiplier:    :      1.0000
Dilution:      :      1.0000
Use Multiplier & Dilution Factor with ISTDs
  
```

Signal 1: DAD1 A, Sig=312,4 Ref=450,100

Peak #	RetTime [min]	Type	Width [min]	Area [mAU*s]	Height [mAU]	Area %
1	2.809	BV	0.1695	274.44699	23.27862	0.2383
2	3.390	VB	0.3385	853.80231	35.76780	0.7412
3	4.320	BV	0.2994	33.64019	1.62596	0.0292
4	4.986	VB	0.2461	37.21425	2.46566	0.0323
5	7.148	BB	0.2965	289.09747	15.29462	0.2510
6	8.700	BV	0.4606	159.13591	4.87859	0.1382
7	10.060	VB	0.3408	7006.96436	315.87442	6.0831
8	11.417	BV	0.5042	246.61763	6.71979	0.2141
9	13.485	VV	0.4219	4389.86523	148.04933	3.8111
10	14.426	VV	0.1752	3.20850e4	2322.44067	27.8548
11	14.504	VB	0.2280	3.58393e4	2323.44043	31.1141

Sample Name: Loreal H2SO4

Peak #	RetTime [min]	Type	Width [min]	Area [mAU*s]	Height [mAU]	Area %
12	16.465	BV	0.4968	2.51790e4	666.44556	21.8593
13	17.759	VB	0.3336	3130.22827	134.43951	2.7175
14	19.851	BV	0.3422	1658.91919	67.15386	1.4402
15	20.457	VV	0.2047	283.40842	20.07479	0.2460
16	20.741	VB	0.2673	337.01813	19.15360	0.2926
17	21.633	BB	0.3346	34.05000	1.39574	0.0296
18	22.551	BB	0.3822	1371.10706	56.28249	1.1903
19	24.776	BV	0.4716	224.36920	6.17933	0.1948
20	25.095	VV	0.4248	211.83162	7.60886	0.1839
21	26.218	VV	0.4291	268.39618	10.12996	0.2330
22	27.923	BV	0.6450	592.64655	12.77938	0.5145
23	29.442	VB	0.7770	680.57471	11.55752	0.5908

Totals : 1.15187e5 6213.03649

Signal 2: DAD1 B, Sig=350,8 Ref=450,100

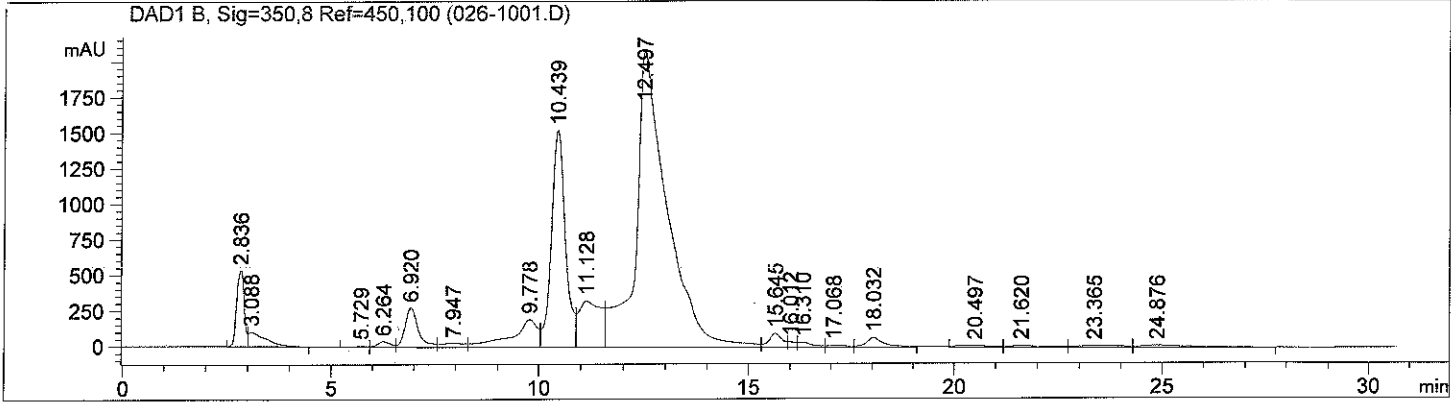
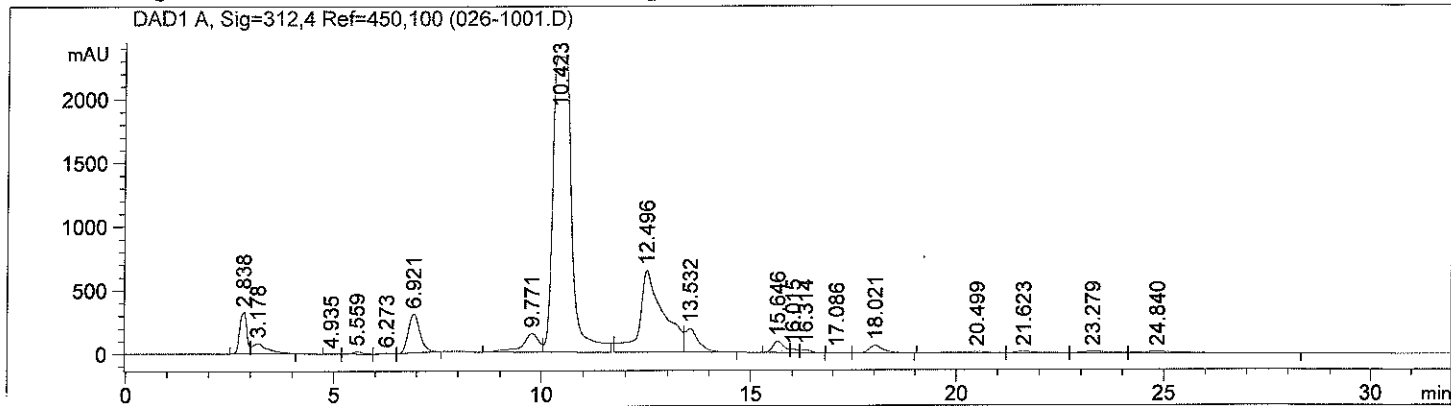
Peak #	RetTime [min]	Type	Width [min]	Area [mAU*s]	Height [mAU]	Area %
1	2.812	BV	0.1671	194.21992	16.52221	0.1074
2	4.163	VV	1.8348	2603.77271	16.70215	1.4404
3	7.106	VV	0.7702	730.41779	11.93242	0.4041
4	7.621	VV	0.5256	492.46155	12.44718	0.2724
5	8.665	VV	0.6653	1614.40515	32.96934	0.8931
6	10.060	VB	0.3804	7371.52393	290.13437	4.0780
7	13.495	BV	0.7627	1.21654e4	206.69415	6.7300
8	14.437	VV	0.3559	3.97574e4	1633.78088	21.9941
9	16.466	VV	0.6487	1.03057e5	2106.72485	57.0120
10	17.726	VB	0.4407	7085.79297	216.03249	3.9199
11	19.850	BV	0.3807	1976.15454	70.58036	1.0932
12	20.454	VV	0.2091	341.10931	23.52988	0.1887
13	20.737	VB	0.2896	405.04645	20.94972	0.2241
14	22.563	BB	0.3879	1423.01721	56.87786	0.7872
15	24.042	BV	0.4468	82.94266	2.35559	0.0459
16	24.771	VV	0.2438	91.05441	5.37055	0.0504
17	25.093	VB	0.4176	188.83784	6.84955	0.1045
18	26.212	BB	0.4411	255.87151	9.35565	0.1416
19	27.969	BV	0.7899	458.78571	7.73607	0.2538
20	29.503	VB	0.6851	468.38040	9.27573	0.2591

Totals : 1.80764e5 4756.82101

=====
 *** End of Report ***


```

=====
Acq. Operator   : Gr2                      Seq. Line : 10
Acq. Instrument : HPLC1                    Location  : Vial 26
Injection Date  : 4/12/2011 9:10:27 PM    Inj       : 1
                                           Inj Volume: 5.0 µl
Sequence File   : C:\Chem32\1\DATA\Gr2\20110412optimization\20110412OPTIMIZATION 2011-04-
                  12 15-29-36\20110412OPTIMIZATION.S
Method          : C:\CHEM32\1\DATA\GR2\20110412OPTIMIZATION\20110412OPTIMIZATION 2011-04-
                  12 15-29-36\20110330_GRADIENT_D.M (Sequence Method)
Last changed    : 4/12/2011 3:01:52 PM by Gr2
  
```



=====
 Area Percent Report
 =====

```

Sorted By      : Signal
Multiplier:    : 1.0000
Dilution:      : 1.0000
Use Multiplier & Dilution Factor with ISTDs
  
```

Signal 1: DAD1 A, Sig=312,4 Ref=450,100

Peak #	RetTime [min]	Type	Width [min]	Area [mAU*s]	Height [mAU]	Area %
1	2.838	BV	0.1952	3942.43701	325.78586	3.1661
2	3.178	VB	0.3691	2087.52075	80.33888	1.6764
3	4.935	BV	0.2103	18.60608	1.44471	0.0149
4	5.559	VV	0.2498	320.23386	19.68217	0.2572
5	6.273	VV	0.2661	106.94529	6.63339	0.0859
6	6.921	VB	0.3044	6040.28223	305.79797	4.8508
7	9.771	BV	0.4067	4104.74951	146.56367	3.2964
8	10.423	VB	0.3726	7.18894e4	2325.59961	57.7326
9	12.496	BV	0.5119	2.52024e4	642.13300	20.2394
10	13.532	VB	0.3267	4266.67188	185.26688	3.4265
11	15.646	BV	0.2796	1630.81360	88.25278	1.3097

Sample Name: Loreal H2SO4

Peak #	RetTime [min]	Type	Width [min]	Area [mAU*s]	Height [mAU]	Area %
12	16.015	VV	0.1785	316.83063	25.94321	0.2544
13	16.314	VB	0.2534	381.67789	22.79195	0.3065
14	17.086	BV	0.2829	32.97872	1.69570	0.0265
15	18.021	VB	0.3481	1379.91284	58.29897	1.1082
16	20.499	BV	0.8624	693.98102	10.70446	0.5573
17	21.623	VV	0.6540	571.71625	12.53683	0.4591
18	23.279	VV	0.7064	745.56714	14.68244	0.5987
19	24.840	VB	0.7968	788.72577	13.20503	0.6334

Totals : 1.24521e5 4287.35752

Signal 2: DAD1 B, Sig=350,8 Ref=450,100

Peak #	RetTime [min]	Type	Width [min]	Area [mAU*s]	Height [mAU]	Area %
1	2.836	BV	0.1991	6620.64502	532.24469	3.4941
2	3.088	VB	0.3759	2927.36230	99.87936	1.5449
3	5.729	BV	0.2307	165.16408	10.43337	0.0872
4	6.264	VV	0.3315	836.59656	38.49788	0.4415
5	6.920	VB	0.3314	6112.63770	277.04590	3.2260
6	7.947	BV	0.5586	1111.28369	26.21504	0.5865
7	9.778	VV	0.5871	8407.04492	193.43085	4.4368
8	10.439	VV	0.3491	3.51206e4	1522.76599	18.5350
9	11.128	VV	0.4943	1.18598e4	323.02866	6.2590
10	12.497	VV	0.6714	1.07478e5	2078.18628	56.7214
11	15.645	VV	0.3197	2096.53271	95.64155	1.1064
12	16.012	VV	0.1837	464.69464	36.71684	0.2452
13	16.310	VV	0.3440	791.15491	32.27434	0.4175
14	17.068	VV	0.4832	374.87347	10.19037	0.1978
15	18.032	VV	0.4179	1998.30566	67.01441	1.0546
16	20.497	BV	0.7457	658.69116	11.82771	0.3476
17	21.620	VV	0.7097	673.79944	13.37655	0.3556
18	23.365	VV	0.8320	775.43658	11.59864	0.4092
19	24.876	VB	0.9787	1010.91406	13.18230	0.5335

Totals : 1.89483e5 5393.55072

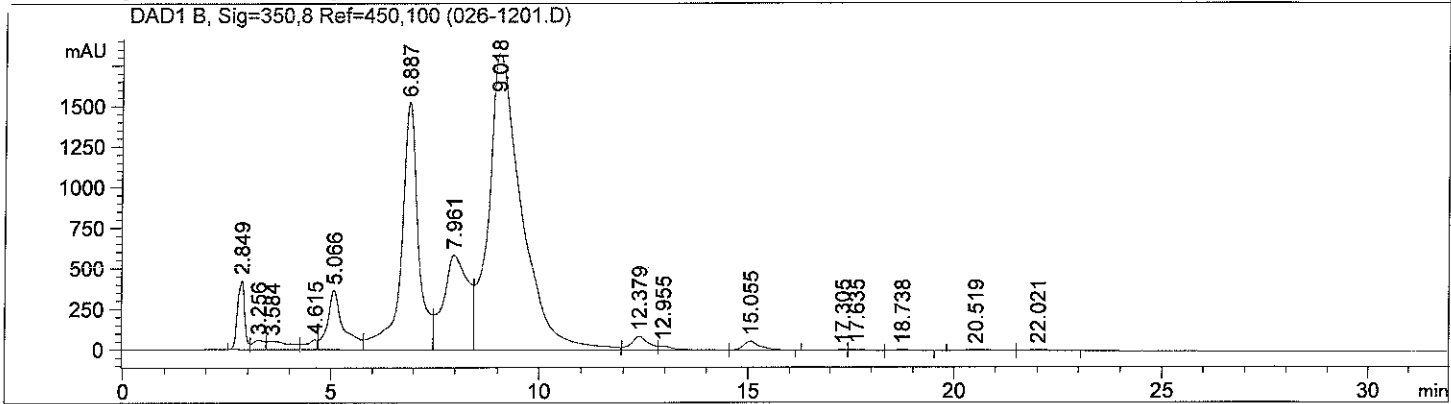
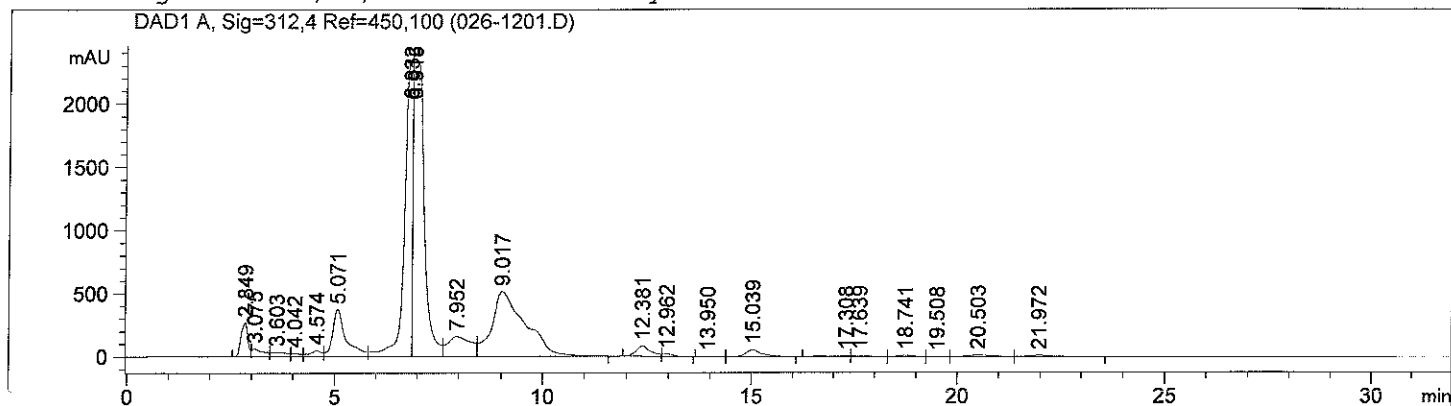
*** End of Report ***

Sample Name: Loreal H2SO4

```

=====
Acq. Operator   : Gr2                      Seq. Line : 12
Acq. Instrument : HPLC1                   Location  : Vial 26
Injection Date  : 4/12/2011 10:52:10 PM  Inj       : 1
                                           Inj Volume: 5.0 µl

Sequence File   : C:\Chem32\1\DATA\Gr2\20110412optimization\20110412OPTIMIZATION 2011-04-
                  12 15-29-36\20110412OPTIMIZATION.S
Method          : C:\CHEM32\1\DATA\GR2\20110412OPTIMIZATION\20110412OPTIMIZATION 2011-04-
                  12 15-29-36\20110330_GRADIENT_E.M (Sequence Method)
Last changed    : 4/12/2011 3:03:16 PM by Gr2
    
```



Area Percent Report

```

Sorted By      : Signal
Multiplier:    : 1.0000
Dilution:      : 1.0000
Use Multiplier & Dilution Factor with ISTDs
    
```

Signal 1: DAD1 A, Sig=312,4 Ref=450,100

Peak #	RetTime [min]	Type	Width [min]	Area [mAU*s]	Height [mAU]	Area %
1	2.849	BV	0.1564	3126.60669	271.44437	2.4040
2	3.075	VV	0.2568	1204.75500	62.52672	0.9263
3	3.603	VV	0.3910	950.84692	34.77617	0.7311
4	4.042	VV	0.2452	423.28522	24.78993	0.3255
5	4.574	VV	0.2823	953.34497	47.47821	0.7330
6	5.071	VV	0.3179	8358.77930	372.29877	6.4268
7	6.832	VV	0.1986	3.14189e4	2340.04785	24.1571
8	6.915	VV	0.2261	4.29905e4	2342.32739	33.0541
9	7.952	VV	0.5420	6168.81348	158.53836	4.7430
10	9.017	VB	0.7470	2.84181e4	512.39636	21.8498
11	12.381	BV	0.3498	1976.04688	81.23592	1.5193

Sample Name: Loreal H2SO4

Peak #	RetTime [min]	Type	Width [min]	Area [mAU*s]	Height [mAU]	Area %
12	12.962	VB	0.2864	354.55255	18.76834	0.2726
13	13.950	BV	0.3006	33.24429	1.52332	0.0256
14	15.039	VB	0.3926	1430.69482	54.08478	1.1000
15	17.308	BV	0.4566	288.11496	8.22695	0.2215
16	17.639	VV	0.4287	267.65228	9.61808	0.2058
17	18.741	VV	0.4394	268.10037	9.61328	0.2061
18	19.508	VV	0.3814	76.06835	2.69400	0.0585
19	20.503	VV	0.6855	682.38007	14.02940	0.5247
20	21.972	VB	0.7541	670.23389	12.10203	0.5153

Totals : 1.30061e5 6378.52022

Signal 2: DAD1 B, Sig=350,8 Ref=450,100

Peak #	RetTime [min]	Type	Width [min]	Area [mAU*s]	Height [mAU]	Area %
1	2.849	BV	0.1627	5075.13477	426.79938	2.6347
2	3.256	VV	0.2904	1117.65845	56.11381	0.5802
3	3.584	VV	0.5102	2050.93042	51.77103	1.0647
4	4.615	VV	0.2534	1144.85535	60.88567	0.5943
5	5.066	VV	0.3660	9694.81738	364.80243	5.0330
6	6.887	VV	0.4130	4.35536e4	1525.82947	22.6104
7	7.961	VV	0.5735	2.41578e4	582.90662	12.5413
8	9.018	VB	0.7547	9.96769e4	1826.55029	51.7462
9	12.379	BV	0.3977	2416.28833	84.98938	1.2544
10	12.955	VV	0.4139	729.88885	24.33360	0.3789
11	15.055	VB	0.4080	1582.64819	55.95395	0.8216
12	17.305	BV	0.4364	230.23643	6.91564	0.1195
13	17.635	VB	0.4147	220.53027	8.22750	0.1145
14	18.738	BB	0.4157	210.88982	8.20884	0.1095
15	20.519	BV	0.6394	405.94644	7.69633	0.2107
16	22.021	VB	0.6106	358.47501	8.28776	0.1861

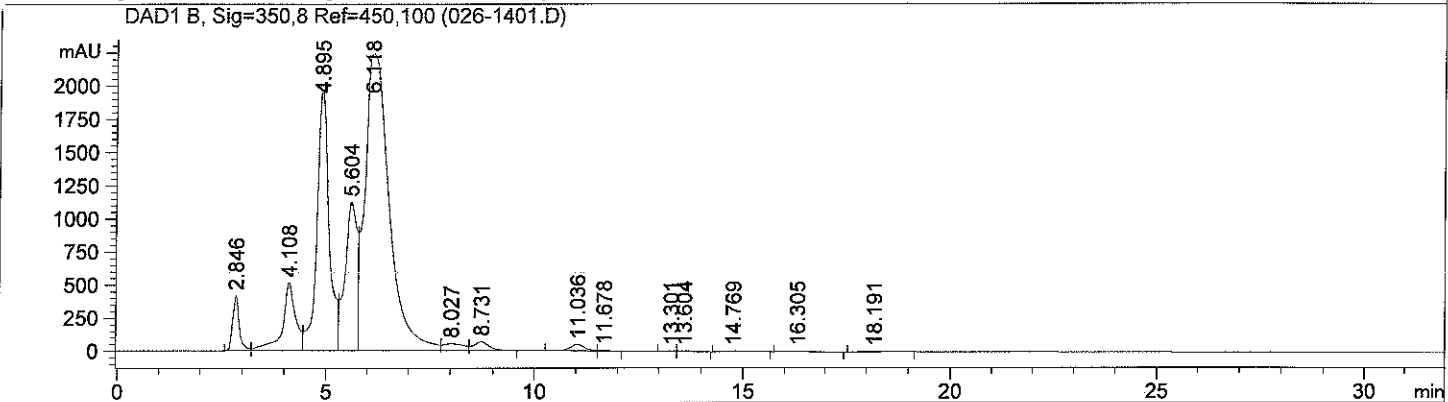
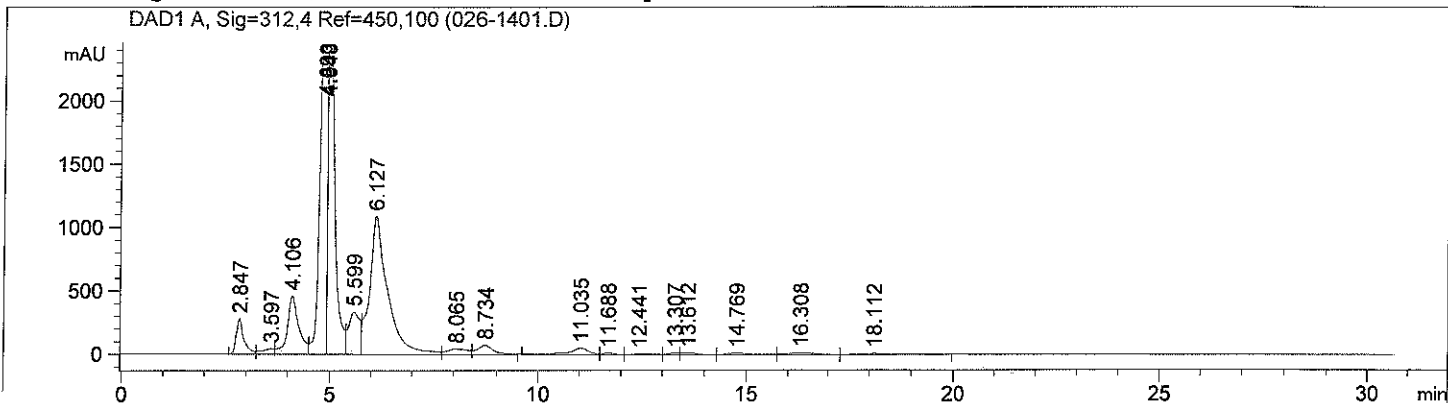
Totals : 1.92627e5 5100.27170

*** End of Report ***

Sample Name: Loreal H2SO4

```

=====
Acq. Operator   : Gr2                      Seq. Line :   14
Acq. Instrument : HPLC1                   Location  : Vial 26
Injection Date  : 4/13/2011 12:34:00 AM   Inj       :    1
                                           Inj Volume: 5.0 µl
Sequence File   : C:\Chem32\1\DATA\Gr2\20110412optimization\20110412OPTIMIZATION 2011-04-
                  12 15-29-36\20110412OPTIMIZATION.S
Method          : C:\CHEM32\1\DATA\GR2\20110412OPTIMIZATION\20110412OPTIMIZATION 2011-04-
                  12 15-29-36\20110330_GRADIENT_F.M (Sequence Method)
Last changed    : 4/12/2011 3:04:28 PM by Gr2
    
```



=====
 Area Percent Report
 =====

```

Sorted By      :      Signal
Multiplier:    :      1.0000
Dilution:      :      1.0000
Use Multiplier & Dilution Factor with ISTDs
    
```

Signal 1: DAD1 A, Sig=312,4 Ref=450,100

Peak #	RetTime [min]	Type	Width [min]	Area [mAU*s]	Height [mAU]	Area %
1	2.847	BV	0.1728	3483.94897	276.79559	2.9516
2	3.597	VV	0.2708	831.06219	41.64101	0.7041
3	4.106	VV	0.2678	8799.81152	458.67542	7.4551
4	4.893	VV	0.1603	2.97835e4	2342.98853	25.2322
5	4.949	VV	0.1845	2.90031e4	2340.99976	24.5711
6	5.599	VV	0.2645	6251.49365	330.74615	5.2962
7	6.127	VV	0.4062	3.28605e4	1088.41309	27.8390
8	8.065	VV	0.4842	1428.50732	41.64626	1.2102
9	8.734	VB	0.3714	1825.66333	70.66187	1.5467
10	11.035	BV	0.4825	1694.54382	49.85591	1.4356
11	11.688	VV	0.3118	233.03987	10.88428	0.1974

Sample Name: Loreal H2SO4

Peak #	RetTime [min]	Type	Width [min]	Area [mAU*s]	Height [mAU]	Area %
12	12.441	VV	0.5939	255.76152	5.14586	0.2167
13	13.307	VV	0.2769	178.84372	9.19472	0.1515
14	13.612	VV	0.3997	274.57755	10.47916	0.2326
15	14.769	VV	0.5493	374.08374	10.16635	0.3169
16	16.308	VV	0.5578	471.08716	11.85048	0.3991
17	18.112	VB	0.6093	288.22040	5.70567	0.2442

Totals : 1.18038e5 7105.85011

Signal 2: DAD1 B, Sig=350,8 Ref=450,100

Peak #	RetTime [min]	Type	Width [min]	Area [mAU*s]	Height [mAU]	Area %
1	2.846	BV	0.1751	4589.45996	414.78714	2.6075
2	4.108	VV	0.3045	1.13921e4	514.07550	6.4724
3	4.895	VV	0.3023	3.98476e4	1951.24268	22.6394
4	5.604	VV	0.2895	2.32389e4	1122.49805	13.2032
5	6.118	VV	0.5893	9.10369e4	2234.49707	51.7225
6	8.027	VV	0.4749	1777.16638	52.24506	1.0097
7	8.731	VB	0.3712	1722.14502	67.14687	0.9784
8	11.036	BV	0.3946	1290.04675	48.76677	0.7329
9	11.678	VB	0.2613	134.20679	7.77965	0.0762
10	13.301	BV	0.2310	80.23079	5.22990	0.0456
11	13.604	VB	0.3699	173.78241	7.34849	0.0987
12	14.769	BB	0.4643	255.85927	8.72063	0.1454
13	16.305	BB	0.5854	282.03992	6.35945	0.1602
14	18.191	BB	0.5867	189.77145	4.40465	0.1078

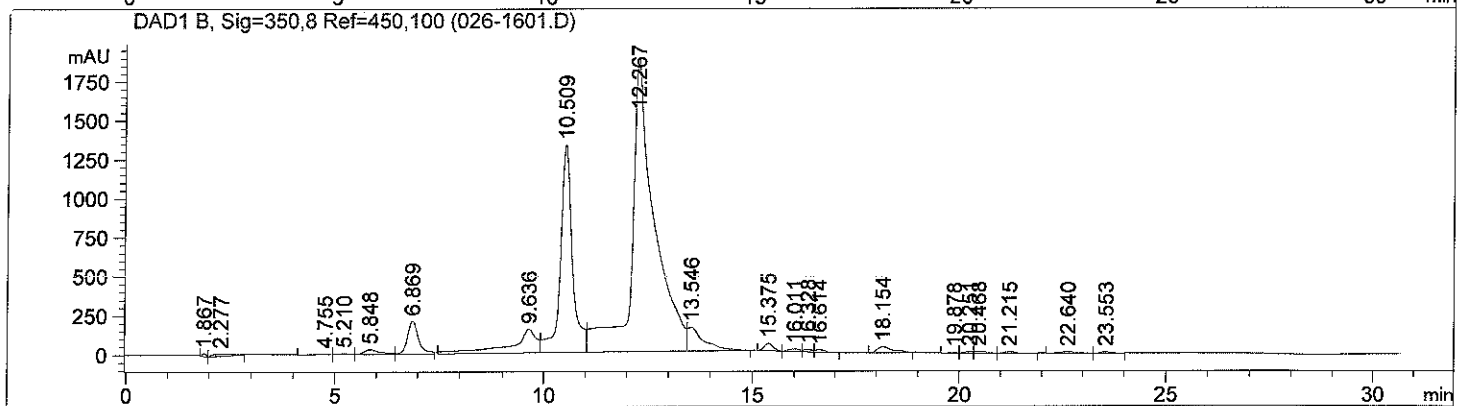
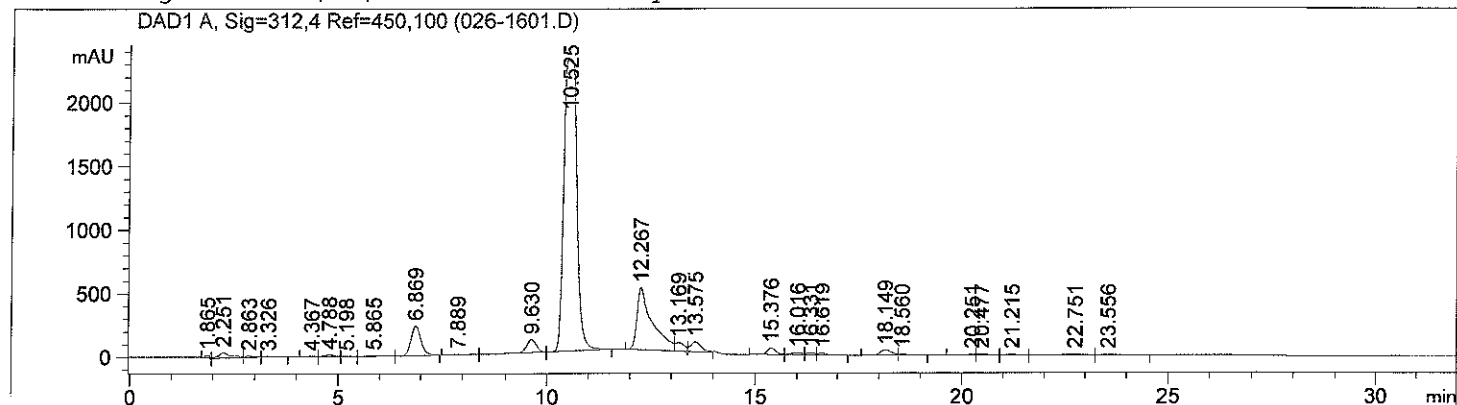
Totals : 1.76010e5 6445.10191

*** End of Report ***

```

=====
Acq. Operator   : Gr2                               Seq. Line : 16
Acq. Instrument : HPLC1                             Location  : Vial 26
Injection Date  : 4/13/2011 2:15:44 AM             Inj       : 1
                                                    Inj Volume: 5.0 µl

Sequence File   : C:\Chem32\1\DATA\Gr2\20110412optimization\20110412OPTIMIZATION 2011-04-
                  12 15-29-36\20110412OPTIMIZATION.S
Method          : C:\CHEM32\1\DATA\GR2\20110412OPTIMIZATION\20110412OPTIMIZATION 2011-04-
                  12 15-29-36\20110412_GRADIENT_G_FLOW.M (Sequence Method)
Last changed    : 4/12/2011 3:10:04 PM by Gr2
  
```



=====
 Area Percent Report
 =====

```

Sorted By      :      Signal
Multiplier:    :      1.0000
Dilution:      :      1.0000
Use Multiplier & Dilution Factor with ISTDs
  
```

Signal 1: DAD1 A, Sig=312,4 Ref=450,100

Peak #	RetTime [min]	Type	Width [min]	Area [mAU*s]	Height [mAU]	Area %
1	1.865	BV	0.1329	178.48334	21.49673	0.2310
2	2.251	VV	0.2833	931.15271	45.02839	1.2050
3	2.863	VV	0.3019	266.07498	12.32171	0.3443
4	3.326	VB	0.3022	172.10970	7.77535	0.2227
5	4.367	BV	0.2152	26.91249	1.97258	0.0348
6	4.788	VV	0.2124	222.13779	16.15351	0.2875
7	5.198	VV	0.2224	21.31091	1.47635	0.0276
8	5.865	VV	0.3161	126.18504	5.79333	0.1633
9	6.869	VB	0.2615	4027.73682	235.59889	5.2124
10	7.889	BV	0.4154	162.34894	5.45262	0.2101
11	9.630	VV	0.2563	1704.83069	103.45125	2.2062

Sample Name: Loreal H2SO4

Peak #	RetTime [min]	Type	Width [min]	Area [mAU*s]	Height [mAU]	Area %
12	10.525	VB	0.3012	5.02663e4	2298.16528	65.0503
13	12.267	BV	0.3502	1.26885e4	489.83060	16.4204
14	13.169	VV	0.2362	1069.02185	67.71009	1.3834
15	13.575	VB	0.2792	1519.69714	80.88120	1.9667
16	15.376	BV	0.2352	793.93365	51.68470	1.0274
17	16.016	VV	0.3184	342.83087	17.51519	0.4437
18	16.331	VV	0.2064	254.24400	17.82608	0.3290
19	16.619	VB	0.2572	269.84888	16.12774	0.3492
20	18.149	BV	0.3173	823.39459	40.82461	1.0656
21	18.560	VB	0.2417	180.55592	10.76409	0.2337
22	20.251	BV	0.2497	169.25940	9.32768	0.2190
23	20.477	VV	0.3086	203.91309	10.22765	0.2639
24	21.215	VV	0.3098	168.85493	8.80268	0.2185
25	22.751	VV	0.5150	406.27759	10.74709	0.5258
26	23.556	VB	0.3648	276.99762	10.88789	0.3585

Totals : 7.72729e4 3597.84328

Signal 2: DAD1 B, Sig=350,8 Ref=450,100

Peak #	RetTime [min]	Type	Width [min]	Area [mAU*s]	Height [mAU]	Area %
1	1.867	BV	0.1292	125.11934	16.00751	0.1078
2	2.277	VB	0.4231	419.82004	12.71809	0.3617
3	4.755	BV	0.3185	51.84200	2.39546	0.0447
4	5.210	VV	0.3098	69.17097	3.48175	0.0596
5	5.848	VV	0.3439	667.37054	28.01721	0.5750
6	6.869	VB	0.2730	3721.47021	207.77635	3.2063
7	9.636	BV	0.5508	6237.88232	148.87350	5.3744
8	10.509	VV	0.2931	2.64936e4	1326.21704	22.8261
9	12.267	VV	0.4967	7.11397e4	1874.67139	61.2917
10	13.546	VB	0.3725	4110.69482	150.56627	3.5416
11	15.375	BV	0.2172	621.87329	44.45937	0.5358
12	16.011	VV	0.2998	246.26042	13.56681	0.2122
13	16.328	VV	0.2040	199.50546	14.36617	0.1719
14	16.614	VB	0.2540	219.55560	13.48173	0.1892
15	18.154	BB	0.3792	924.98761	36.55841	0.7969
16	19.878	BV	0.2399	41.28553	2.61919	0.0356
17	20.251	VV	0.1948	113.79060	8.46847	0.0980
18	20.468	VV	0.3050	180.01999	9.25237	0.1551
19	21.215	VB	0.2834	126.04605	7.52572	0.1086
20	22.640	BV	0.4651	215.18649	6.38589	0.1854
21	23.553	VB	0.3074	142.16174	6.87011	0.1225

Totals : 1.16067e5 3934.27882

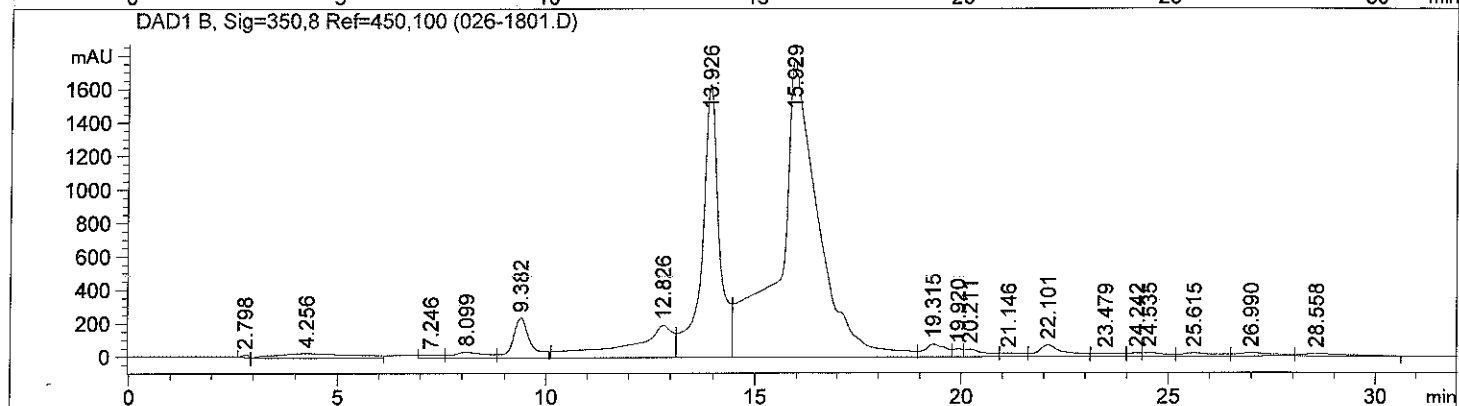
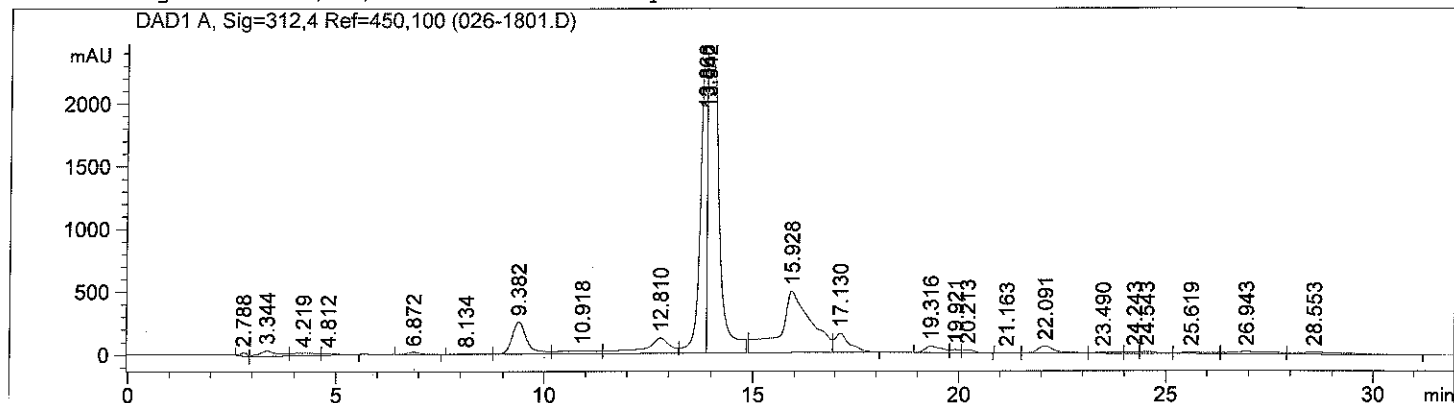
*** End of Report ***

Sample Name: Loreal H2SO4

```

=====
Acq. Operator   : Gr2                               Seq. Line :   18
Acq. Instrument : HPLC1                             Location  : Vial 26
Injection Date  : 4/13/2011 3:58:52 AM             Inj       :    1
                                                    Inj Volume: 5.0 µl

Sequence File   : C:\Chem32\1\DATA\Gr2\20110412optimization\20110412OPTIMIZATION 2011-04-12 15-29-36\20110412OPTIMIZATION.S
Method          : C:\CHEM32\1\DATA\GR2\20110412OPTIMIZATION\20110412OPTIMIZATION 2011-04-12 15-29-36\20110412_GRADIENT_H_TEMP45.M (Sequence Method)
Last changed    : 4/12/2011 3:11:24 PM by Gr2
    
```



=====
 Area Percent Report
 =====

```

Sorted By      :      Signal
Multiplier:    :      1.0000
Dilution:      :      1.0000
Use Multiplier & Dilution Factor with ISTDs
    
```

Signal 1: DAD1 A, Sig=312,4 Ref=450,100

Peak #	RetTime [min]	Type	Width [min]	Area [mAU*s]	Height [mAU]	Area %
1	2.788	BV	0.1603	285.63269	24.81039	0.2283
2	3.344	VB	0.4055	1310.21777	43.98628	1.0473
3	4.219	BV	0.5384	787.59308	19.45248	0.6296
4	4.812	VB	0.4172	381.81564	12.40120	0.3052
5	6.872	BB	0.3102	331.38599	15.96282	0.2649
6	8.134	BV	0.5263	166.43411	4.27440	0.1330
7	9.382	VB	0.3746	6344.84961	254.68771	5.0718
8	10.918	BV	0.8409	1442.59241	21.88873	1.1532
9	12.810	VV	0.5680	5085.96973	121.59196	4.0655
10	13.866	VV	0.1693	2.59339e4	2340.62012	20.7306
11	13.942	VB	0.2346	4.59290e4	2343.49658	36.7139

Sample Name: Loreal H2SO4

Peak #	RetTime [min]	Type	Width [min]	Area [mAU*s]	Height [mAU]	Area %
12	15.928	BV	0.6754	2.57104e4	487.44604	20.5519
13	17.130	VB	0.3504	3701.73315	148.72501	2.9590
14	19.316	BV	0.3660	1392.01672	52.39188	1.1127
15	19.921	VV	0.2202	378.68646	25.07007	0.3027
16	20.213	VB	0.2692	429.87949	24.20342	0.3436
17	21.163	BV	0.3309	61.25368	2.61872	0.0490
18	22.091	VV	0.4298	1601.47363	56.31625	1.2802
19	23.490	VV	0.5813	320.93378	7.18302	0.2565
20	24.243	VV	0.2620	207.81808	11.43921	0.1661
21	24.543	VV	0.4377	380.16058	12.90314	0.3039
22	25.619	VV	0.6151	563.71375	13.01949	0.4506
23	26.943	VV	0.9038	1093.29150	15.82931	0.8739
24	28.553	VBA	0.9995	1258.83521	16.00626	1.0063

Totals : 1.25100e5 6076.32451

Signal 2: DAD1 B, Sig=350,8 Ref=450,100

Peak #	RetTime [min]	Type	Width [min]	Area [mAU*s]	Height [mAU]	Area %
1	2.798	BV	0.1544	195.46481	17.76248	0.0945
2	4.256	VV	1.6888	3975.98584	30.02824	1.9222
3	7.246	BV	0.4911	760.19867	20.57139	0.3675
4	8.099	VV	0.7113	1951.95361	36.89033	0.9437
5	9.382	VB	0.4233	6937.08545	239.96562	3.3537
6	12.826	BV	0.9562	1.44629e4	192.13309	6.9920
7	13.926	VV	0.4004	4.59422e4	1632.23792	22.2104
8	15.929	VB	0.8340	1.17493e5	1784.77747	56.8009
9	19.315	BV	0.4706	2740.83179	77.13048	1.3250
10	19.920	VV	0.2337	795.22394	48.39117	0.3844
11	20.211	VB	0.4593	1572.06299	46.16346	0.7600
12	21.146	BV	0.5208	882.66492	22.34819	0.4267
13	22.101	VB	0.6064	3028.08911	69.76276	1.4639
14	23.479	BV	0.6235	964.60284	19.62298	0.4663
15	24.242	VV	0.2890	446.60599	21.79646	0.2159
16	24.535	VV	0.5305	837.99658	22.39983	0.4051
17	25.615	VB	0.8047	1198.41321	20.30055	0.5794
18	26.990	BV	0.9085	1325.19116	19.50966	0.6407
19	28.558	VB	0.9897	1339.78552	17.60781	0.6477

Totals : 2.06850e5 4339.39988

```

=====
*** End of Report ***

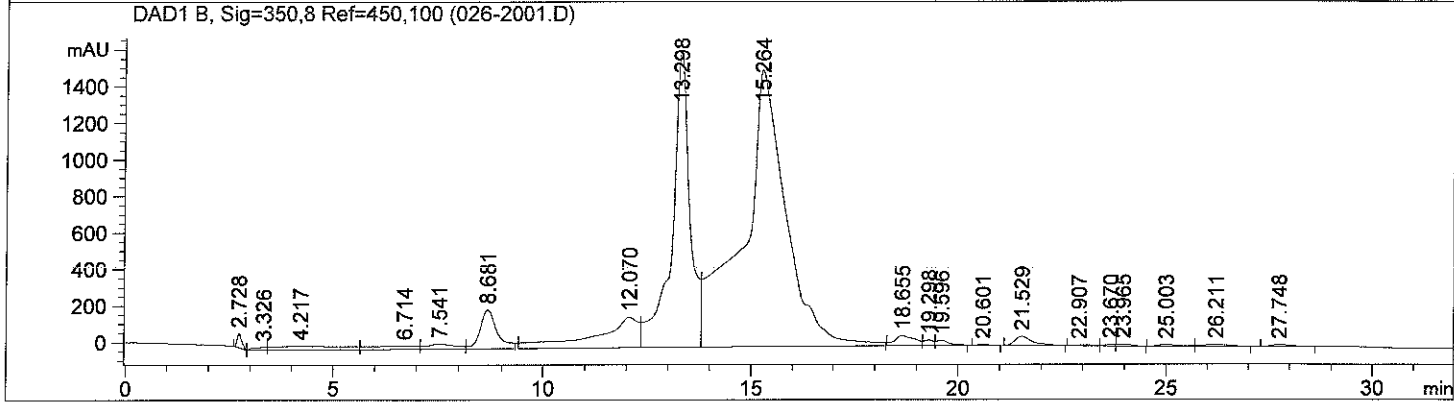
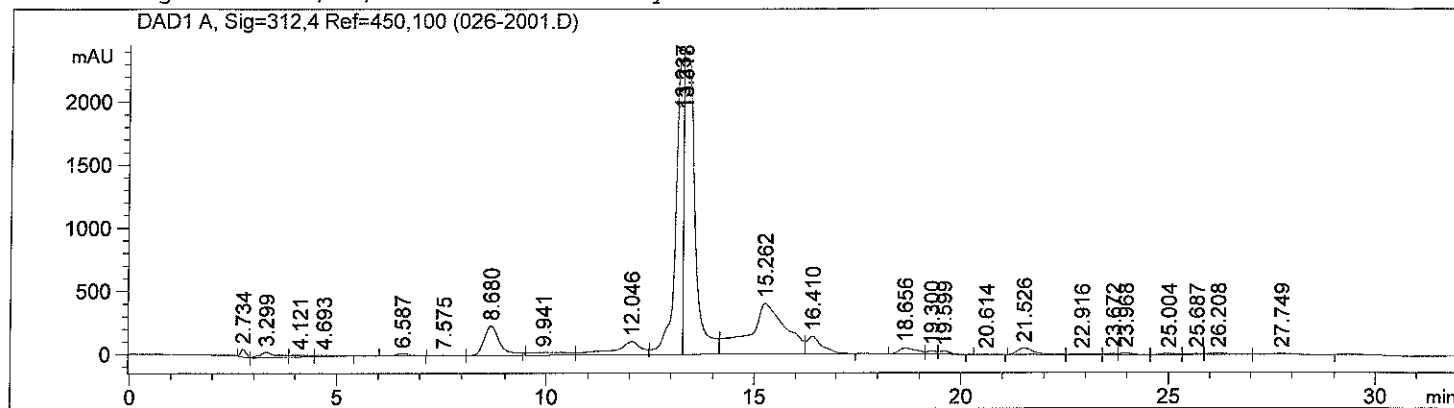
```

Sample Name: Loreal H2SO4

```

=====
Acq. Operator   : Gr2                      Seq. Line :   20
Acq. Instrument : HPLC1                   Location  : Vial 26
Injection Date  : 4/13/2011 5:42:02 AM   Inj       :    1
                                           Inj Volume: 5.0 µl

Sequence File   : C:\Chem32\1\DATA\Gr2\20110412optimization\20110412OPTIMIZATION 2011-04-
                  12 15-29-36\20110412OPTIMIZATION.S
Method          : C:\CHEM32\1\DATA\GR2\20110412OPTIMIZATION\20110412OPTIMIZATION 2011-04-
                  12 15-29-36\20110412_GRADIENT_I_TEMP50.M (Sequence Method)
Last changed    : 4/12/2011 3:12:21 PM by Gr2
    
```



=====
 Area Percent Report
 =====

```

Sorted By      :      Signal
Multiplier:    :      1.0000
Dilution:      :      1.0000
Use Multiplier & Dilution Factor with ISTDs
    
```

Signal 1: DAD1 A, Sig=312,4 Ref=450,100

Peak #	RetTime [min]	Type	Width [min]	Area [mAU*s]	Height [mAU]	Area %
1	2.734	BV	0.1335	541.34052	58.77060	0.4406
2	3.299	VB	0.3758	1180.48877	42.79155	0.9608
3	4.121	BV	0.4221	475.52917	14.00680	0.3871
4	4.693	VB	0.4528	340.02789	10.15138	0.2768
5	6.587	BB	0.3086	356.42618	17.14380	0.2901
6	7.575	BV	0.3841	76.94096	2.41240	0.0626
7	8.680	VB	0.3717	5711.49121	231.60455	4.6488
8	9.941	BV	0.8070	1456.21985	21.47709	1.1853
9	12.046	VV	0.6104	4675.18213	103.23179	3.8053
10	13.237	VV	0.1919	3.05153e4	2343.91699	24.8376
11	13.318	VB	0.2281	4.37866e4	2341.79346	35.6397

Sample Name: Loreal H2SO4

Peak #	RetTime [min]	Type	Width [min]	Area [mAU*s]	Height [mAU]	Area %
12	15.262	BV	0.7916	2.48224e4	400.22141	20.2040
13	16.410	VB	0.3608	3534.28979	137.06546	2.8767
14	18.656	BV	0.3870	1324.06287	46.95655	1.0777
15	19.300	VV	0.2263	389.59863	24.93759	0.3171
16	19.599	VB	0.2717	424.30658	23.60663	0.3454
17	20.614	BB	0.3390	54.01264	2.29129	0.0440
18	21.526	BB	0.4128	1391.13269	52.22018	1.1323
19	22.916	BV	0.5166	211.76642	5.36362	0.1724
20	23.672	VV	0.2422	165.35780	9.83519	0.1346
21	23.968	VB	0.3442	260.31821	11.49414	0.2119
22	25.004	BV	0.3968	259.47342	10.26931	0.2112
23	25.687	VV	0.3637	198.23216	7.71558	0.1613
24	26.208	VV	0.5604	431.33298	10.78960	0.3511
25	27.749	VB	0.4598	277.22015	8.51656	0.2256

Totals : 1.22859e5 5938.58354

Signal 2: DAD1 B, Sig=350,8 Ref=450,100

Peak #	RetTime [min]	Type	Width [min]	Area [mAU*s]	Height [mAU]	Area %
1	2.728	BV	0.1170	593.50201	76.12326	0.3174
2	3.326	VV	0.3111	335.24097	14.75108	0.1793
3	4.217	VV	1.3852	2261.08862	19.46458	1.2091
4	6.714	VV	0.9263	1366.14282	18.27180	0.7305
5	7.541	VV	0.6265	1289.48486	27.93689	0.6895
6	8.681	VB	0.3935	5650.23242	211.64786	3.0213
7	12.070	BV	0.9160	1.18704e4	165.65315	6.3474
8	13.298	VV	0.4255	4.85655e4	1611.87878	25.9690
9	15.264	VB	0.9154	1.09404e5	1509.74561	58.5005
10	18.655	BV	0.4395	1761.56128	53.87718	0.9419
11	19.298	VV	0.2337	465.68082	28.64432	0.2490
12	19.596	VB	0.2934	506.28268	25.52701	0.2707
13	20.601	BB	0.3164	44.76480	2.05301	0.0239
14	21.529	BB	0.4442	1440.37366	48.82837	0.7702
15	22.907	BV	0.4830	179.89651	4.80281	0.0962
16	23.670	VV	0.2477	148.53821	8.76764	0.0794
17	23.965	VB	0.3445	229.78435	10.21396	0.1229
18	25.003	BB	0.4550	282.00485	9.37283	0.1508
19	26.211	BB	0.5450	363.50299	9.65960	0.1944
20	27.748	BB	0.4511	255.51164	8.20962	0.1366

Totals : 1.87013e5 3865.42935

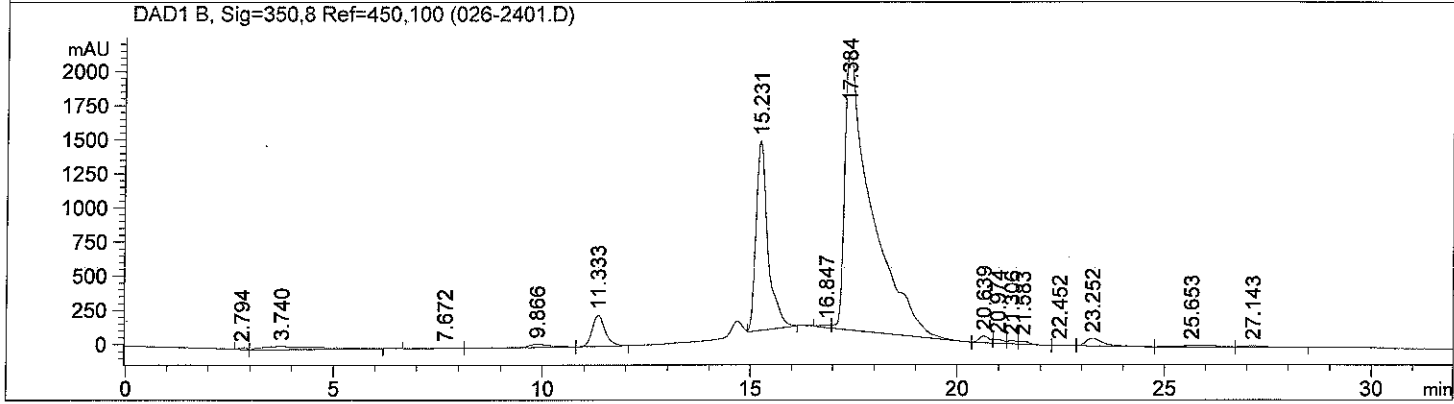
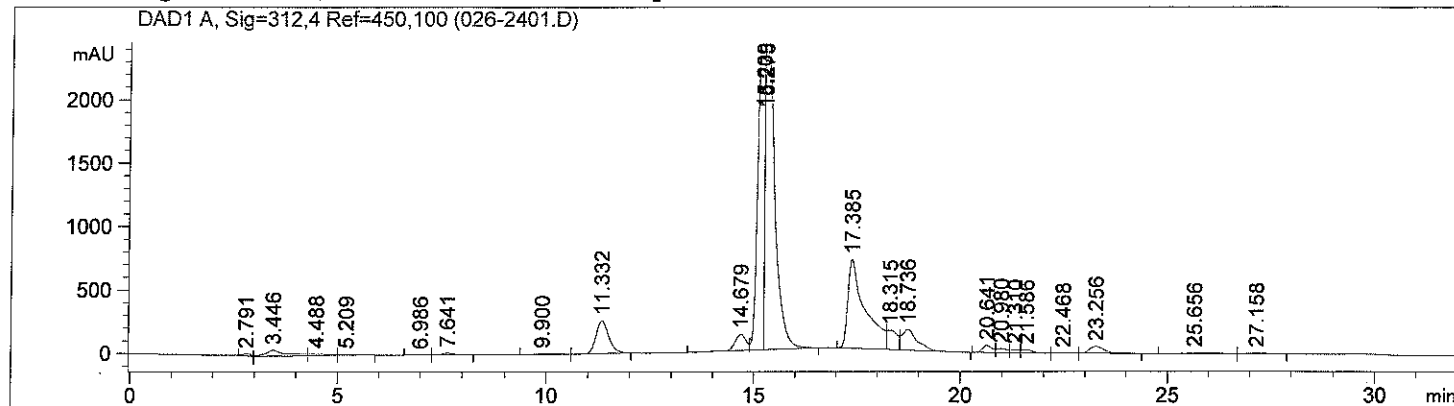
*** End of Report ***

Sample Name: Loreal H2SO4

```

=====
Acq. Operator   : Gr2                      Seq. Line :   24
Acq. Instrument : HPLC1                   Location  : Vial 26
Injection Date  : 4/13/2011 9:18:00 AM    Inj       :    1
                                           Inj Volume: 5.0 µl

Sequence File   : C:\Chem32\1\DATA\Gr2\20110412optimization\20110412OPTIMIZATION 2011-04-
                  12 15-29-36\20110412OPTIMIZATION.S
Method          : C:\CHEM32\1\DATA\GR2\20110412OPTIMIZATION\20110412OPTIMIZATION 2011-04-
                  12 15-29-36\20110412_GRADIENT_J_TEMP30.M (Sequence Method)
Last changed    : 4/12/2011 3:13:26 PM by Gr2
    
```



=====
 Area Percent Report
 =====

```

Sorted By           :      Signal
Multiplier:         :      1.0000
Dilution:           :      1.0000
Use Multiplier & Dilution Factor with ISTDs
    
```

Signal 1: DAD1 A, Sig=312,4 Ref=450,100

Peak #	RetTime [min]	Type	Width [min]	Area [mAU*s]	Height [mAU]	Area %
1	2.791	BV	0.1961	239.24460	17.21473	0.2177
2	3.446	VB	0.4930	1762.39124	47.92371	1.6038
3	4.488	BV	0.4692	503.04092	14.77483	0.4578
4	5.209	VB	0.4251	238.04752	7.77675	0.2166
5	6.986	BV	0.3277	53.55342	2.44373	0.0487
6	7.641	VB	0.3273	338.62292	15.97793	0.3081
7	9.900	BV	0.4738	180.94820	5.58799	0.1647
8	11.332	VB	0.3317	5596.18164	259.38034	5.0925
9	14.679	BV	0.2886	2406.08765	129.58958	2.1895
10	15.209	VV	0.1490	2.71202e4	2309.33667	24.6791
11	15.275	VB	0.2137	3.94881e4	2306.70581	35.9339

Sample Name: Loreal H2SO4

Peak #	RetTime [min]	Type	Width [min]	Area [mAU*s]	Height [mAU]	Area %
12	17.385	BV	0.3910	2.02188e4	700.02582	18.3989
13	18.315	VV	0.2604	2740.62866	154.91821	2.4939
14	18.736	VB	0.3596	4254.29932	166.79359	3.8714
15	20.641	BV	0.2549	973.35309	57.67688	0.8857
16	20.980	VV	0.2425	557.38159	33.78009	0.5072
17	21.310	VV	0.2095	399.41376	27.16618	0.3635
18	21.586	VV	0.2681	452.17365	25.59861	0.4115
19	22.468	VV	0.2534	39.99112	2.38812	0.0364
20	23.256	VB	0.3993	1479.65027	55.81910	1.3465
21	25.656	BV	0.7319	620.13904	10.70465	0.5643
22	27.158	VV	0.5069	228.93889	7.16171	0.2083

Totals : 1.09891e5 6358.74502

Signal 2: DAD1 B, Sig=350,8 Ref=450,100

Peak #	RetTime [min]	Type	Width [min]	Area [mAU*s]	Height [mAU]	Area %
1	2.794	BV	0.1919	171.37988	12.50079	0.1304
2	3.740	VB	1.2251	2243.85449	22.31484	1.7074
3	7.672	BV	0.4881	96.83806	2.71486	0.0737
4	9.866	VV	0.5026	753.78107	22.28480	0.5736
5	11.333	VB	0.3316	4838.38574	224.33946	3.6817
6	15.231	VB	0.3011	2.76625e4	1384.60144	21.0496
7	16.847	BV	0.2577	310.41141	17.26927	0.2362
8	17.384	VV	0.5962	9.13236e4	2032.65613	69.4921
9	20.639	VV	0.2456	791.21973	48.69034	0.6021
10	20.974	VV	0.2340	416.68439	26.13159	0.3171
11	21.306	VV	0.2069	293.97849	20.55387	0.2237
12	21.583	VV	0.2364	301.05359	20.13769	0.2291
13	22.452	VV	0.2342	26.41741	1.74934	0.0201
14	23.252	VV	0.4144	1500.70789	54.31210	1.1420
15	25.653	VV	0.7152	522.13379	9.32604	0.3973
16	27.143	VB	0.4480	162.83479	5.97350	0.1239

Totals : 1.31416e5 3905.55606

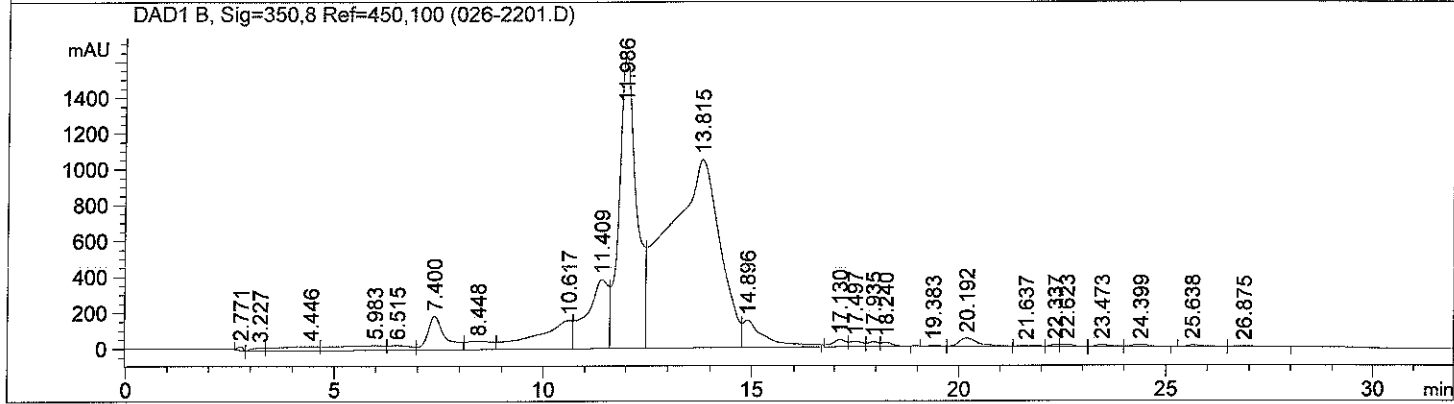
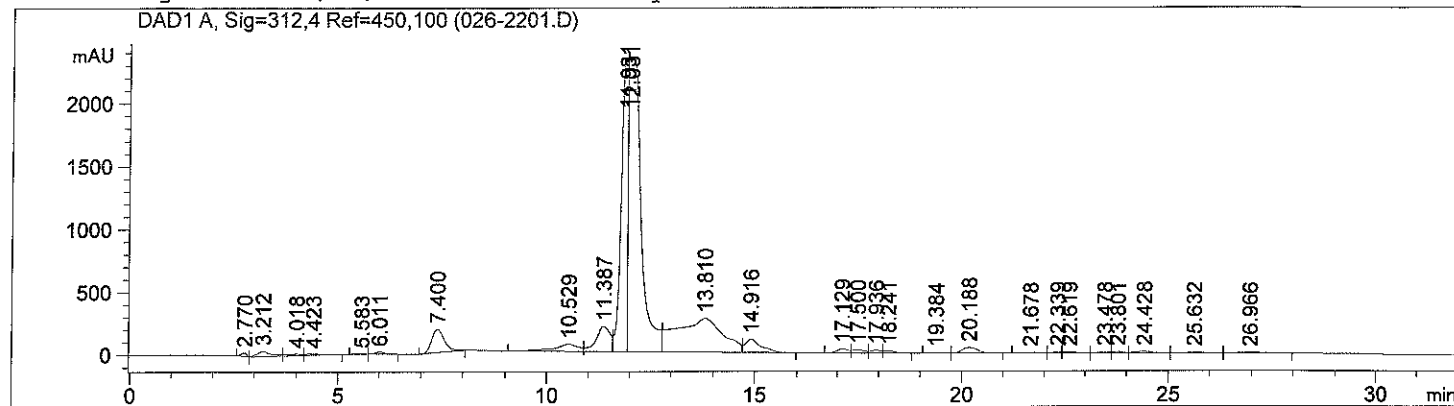
*** End of Report ***

Sample Name: Loreal H2SO4

```

=====
Acq. Operator   : Gr2                               Seq. Line :   22
Acq. Instrument : HPLC1                             Location  : Vial 26
Injection Date  : 4/13/2011 7:26:45 AM             Inj       :    1
                                                    Inj Volume: 5.0 µl

Sequence File   : C:\Chem32\1\DATA\Gr2\20110412optimization\20110412OPTIMIZATION 2011-04-
                  12 15-29-36\20110412OPTIMIZATION.S
Method          : C:\CHEM32\1\DATA\GR2\20110412OPTIMIZATION\20110412OPTIMIZATION 2011-04-
                  12 15-29-36\20110412_GRADIENT_K_TEMP60.M (Sequence Method)
Last changed    : 4/12/2011 3:14:25 PM by Gr2
    
```



Area Percent Report

```

Sorted By      :      Signal
Multiplier:    :      1.0000
Dilution:      :      1.0000
Use Multiplier & Dilution Factor with ISTDs
    
```

Signal 1: DAD1 A, Sig=312,4 Ref=450,100

Peak #	RetTime [min]	Type	Width [min]	Area [mAU*s]	Height [mAU]	Area %
1	2.770	BV	0.1538	276.82434	28.87910	0.2354
2	3.212	VB	0.3292	1032.78613	43.47520	0.8782
3	4.018	BV	0.4016	396.57828	13.15938	0.3372
4	4.423	VB	0.4500	369.89261	11.12245	0.3145
5	5.583	BV	0.2414	34.52741	2.19668	0.0294
6	6.011	VB	0.2621	321.80829	19.14396	0.2737
7	7.400	BB	0.3336	4023.56323	186.58569	3.4215
8	10.529	BV	0.5975	2544.08691	58.48155	2.1634
9	11.387	VV	0.3505	4809.91211	202.95557	4.0902
10	11.931	VV	0.1711	2.53568e4	2328.04102	21.5624
11	12.031	VV	0.2591	4.94193e4	2333.12549	42.0243

Sample Name: Loreal H2SO4

Peak #	RetTime [min]	Type	Width [min]	Area [mAU*s]	Height [mAU]	Area %
12	13.810	VV	1.0046	2.07811e4	271.00052	17.6714
13	14.916	VB	0.3816	2894.02686	106.99084	2.4610
14	17.129	BV	0.2866	660.86548	34.03194	0.5620
15	17.500	VV	0.2959	515.08661	25.26249	0.4380
16	17.936	VV	0.2472	419.27676	24.55226	0.3565
17	18.241	VB	0.2732	369.74982	20.62323	0.3144
18	19.384	BV	0.3106	44.80188	2.17243	0.0381
19	20.188	VB	0.4194	1191.04834	45.20856	1.0128
20	21.678	BV	0.4366	159.27950	4.93404	0.1354
21	22.339	VV	0.2189	162.39388	11.08363	0.1381
22	22.619	VV	0.3210	275.99036	13.03798	0.2347
23	23.478	VV	0.2902	218.33653	11.78149	0.1857
24	23.801	VV	0.2688	227.57312	12.47937	0.1935
25	24.428	VV	0.4267	434.23947	14.52713	0.3693
26	25.632	VV	0.4306	336.75577	10.65963	0.2864
27	26.966	VV	0.6193	320.54987	6.21926	0.2726

Totals : 1.17597e5 5841.73089

Signal 2: DAD1 B, Sig=350,8 Ref=450,100

Peak #	RetTime [min]	Type	Width [min]	Area [mAU*s]	Height [mAU]	Area %
1	2.771	BV	0.1465	190.78685	21.30639	0.1037
2	3.227	VV	0.3032	347.03329	15.86440	0.1886
3	4.446	VV	0.8633	1583.18347	22.93722	0.8603
4	5.983	VV	1.0505	2278.67334	26.78493	1.2383
5	6.515	VV	0.5027	962.11804	26.18376	0.5228
6	7.400	VB	0.4191	5427.05225	185.60918	2.9491
7	8.448	BV	0.5306	1955.45081	43.98982	1.0626
8	10.617	VV	0.7720	9235.93457	156.62759	5.0189
9	11.409	VV	0.4980	1.39140e4	382.81909	7.5610
10	11.986	VV	0.4173	4.75296e4	1653.65857	25.8281
11	13.815	VV	1.1090	8.97626e4	1050.36792	48.7780
12	14.896	VB	0.4880	5473.61963	149.18895	2.9744
13	17.130	BV	0.3289	885.98010	38.43995	0.4815
14	17.497	VV	0.3012	603.91174	28.73222	0.3282
15	17.935	VV	0.2543	455.40836	25.75162	0.2475
16	18.240	VB	0.2823	395.41611	20.94320	0.2149
17	19.383	BV	0.3291	60.18021	2.60902	0.0327
18	20.192	VB	0.4846	1402.15613	44.14273	0.7619
19	21.637	BV	0.4457	176.89586	5.24186	0.0961
20	22.337	VV	0.2169	143.28433	9.78295	0.0779
21	22.623	VB	0.3193	244.00941	11.70297	0.1326
22	23.473	BV	0.3805	269.81314	10.61496	0.1466
23	24.399	VB	0.4729	348.10565	11.13061	0.1892
24	25.638	BB	0.3738	248.17448	9.34484	0.1349
25	26.875	BB	0.5113	129.27200	3.13375	0.0702

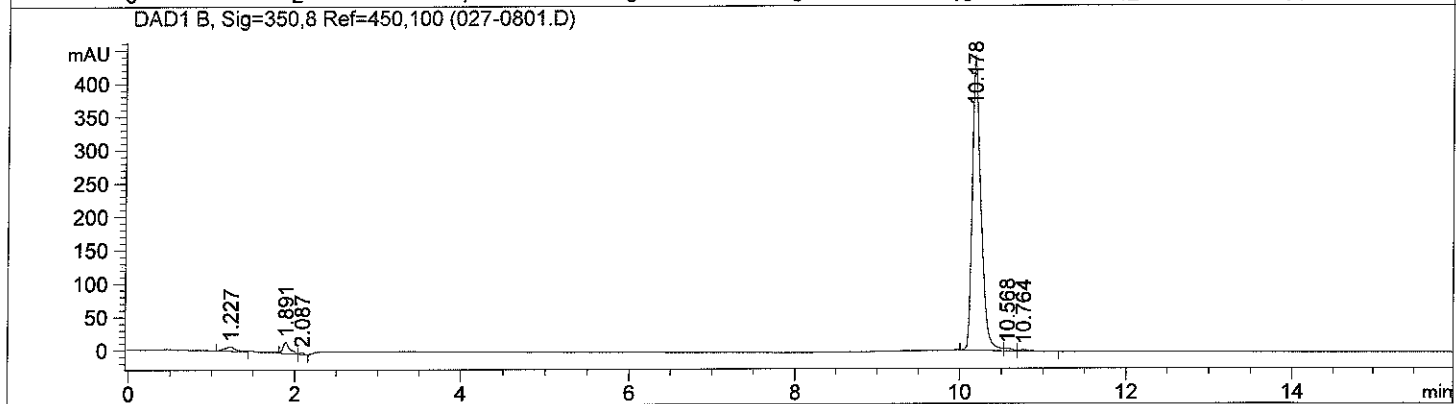
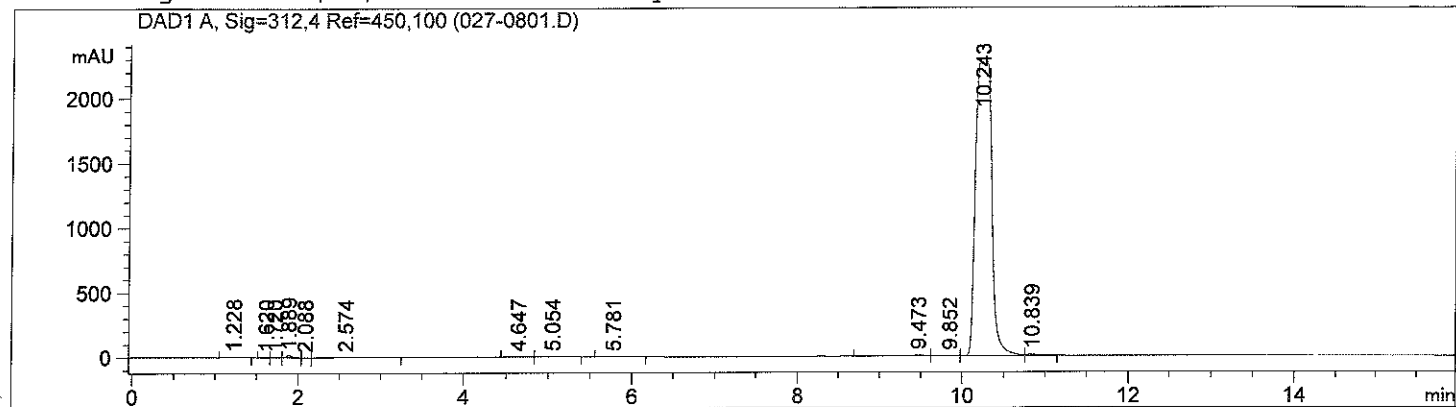
Totals : 1.84023e5 3956.90847

*** End of Report ***


```

=====
Acq. Operator   : Gr2                      Seq. Line :    8
Acq. Instrument : HPLC1                   Location  : Vial 27
Injection Date  : 4/14/2011 5:29:58 PM    Inj       :    1
                                           Inj Volume: 5.0 µl

Sequence File   : C:\Chem32\1\DATA\Gr2\20110414ACN\20110414OPTIMIZATION_ACN_4 2011-04-14
                  15-04-43\20110414OPTIMIZATION_ACN_4.S
Method          : C:\CHEM32\1\DATA\GR2\20110414ACN\20110414OPTIMIZATION_ACN_4 2011-04-14
                  15-04-43\20110413_GRADIENT_ACN3 FLOW0,3 TEMP45.M (Sequence Method)
Last changed    : 4/14/2011 1:59:23 PM by Gr2
  
```



=====
 Area Percent Report
 =====

```

Sorted By      :      Signal
Multiplier:    :      1.0000
Dilution:      :      1.0000
Use Multiplier & Dilution Factor with ISTDs
  
```

Signal 1: DAD1 A, Sig=312,4 Ref=450,100

Peak #	RetTime [min]	Type	Width [min]	Area [mAU*s]	Height [mAU]	Area %
1	1.228	BB	0.1596	54.77727	4.51419	0.1711
2	1.620	BV	0.1031	11.23204	1.54019	0.0351
3	1.720	VV	0.1130	19.28809	2.31907	0.0602
4	1.889	VV	0.0845	117.53441	20.00478	0.3670
5	2.088	VV	0.0568	10.56558	3.02211	0.0330
6	2.574	VB	0.5166	156.85901	3.77642	0.4898
7	4.647	BV	0.1737	16.56793	1.49022	0.0517
8	5.054	VB	0.2254	29.97732	1.97144	0.0936
9	5.781	BB	0.1834	15.54642	1.18228	0.0485
10	9.473	BV	0.1699	109.21514	8.61781	0.3410
11	9.852	VV	0.2175	57.54121	3.39833	0.1797

Sample Name: Octocrylene, padimate O, 2-ethyl 1:1000

Peak #	RetTime [min]	Type	Width [min]	Area [mAU*s]	Height [mAU]	Area %
12	10.243	VV	0.2224	3.13245e4	2307.01978	97.8156
13	10.839	VB	0.1333	100.41719	10.53008	0.3136

Totals : 3.20240e4 2369.38670

Signal 2: DAD1 B, Sig=350,8 Ref=450,100

Peak #	RetTime [min]	Type	Width [min]	Area [mAU*s]	Height [mAU]	Area %
1	1.227	BB	0.1264	58.97041	6.34456	1.7324
2	1.891	VV	0.0823	91.65732	16.12028	2.6927
3	2.087	VV	0.0570	8.71367	2.47981	0.2560
4	10.178	BV	0.1045	3206.15039	442.90347	94.1892
5	10.568	VV	0.1036	24.43221	3.58080	0.7178
6	10.764	VB	0.1104	14.02433	1.81090	0.4120

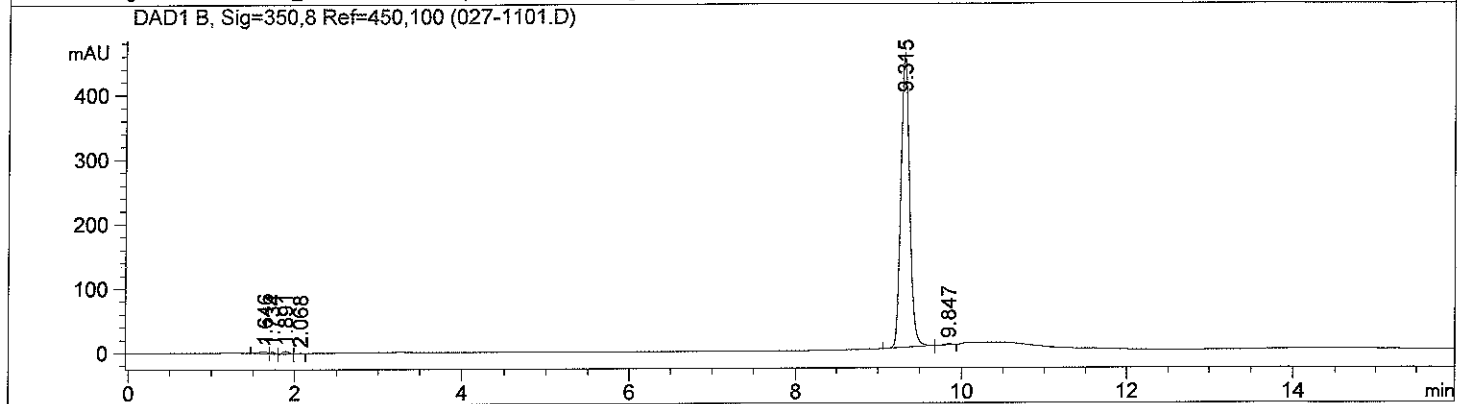
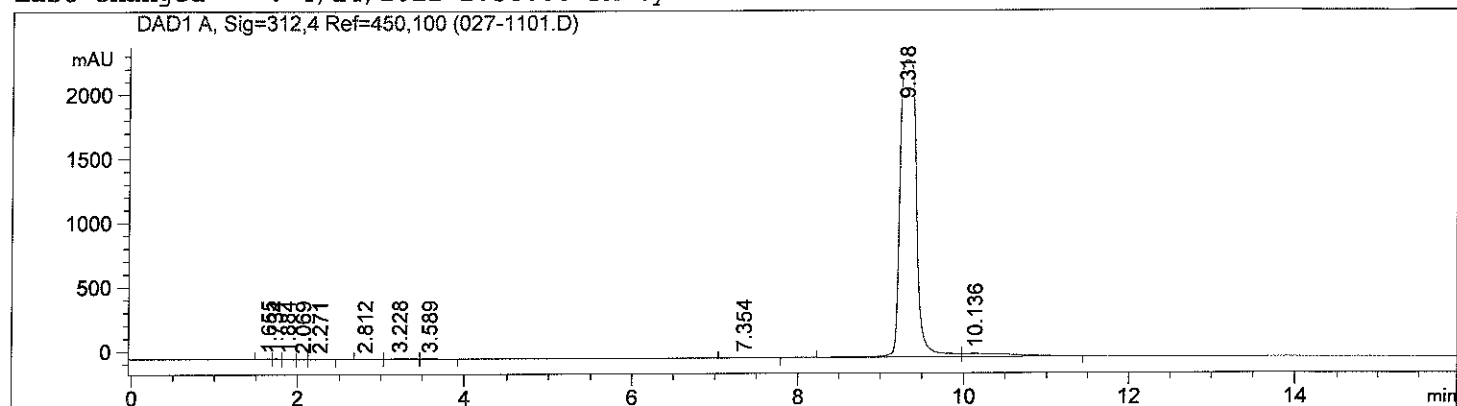
Totals : 3403.94833 473.23983

=====
*** End of Report ***

```

=====
Acq. Operator   : Gr2                      Seq. Line : 11
Acq. Instrument : HPLC1                   Location  : Vial 27
Injection Date  : 4/14/2011 6:23:49 PM   Inj       : 1
                                           Inj Volume: 5.0 µl

Sequence File   : C:\Chem32\1\DATA\Gr2\20110414ACN\20110414OPTIMIZATION_ACN_4 2011-04-14
                  15-04-43\20110414OPTIMIZATION_ACN_4.S
Method          : C:\CHEM32\1\DATA\GR2\20110414ACN\20110414OPTIMIZATION_ACN_4 2011-04-14
                  15-04-43\20110413_GRADIENT_ACN4 FLOW0,3 TEMP45.M (Sequence Method)
Last changed    : 4/14/2011 1:58:00 PM by Gr2
  
```



=====
 Area Percent Report
 =====

```

Sorted By      :      Signal
Multiplier:    :      1.0000
Dilution:      :      1.0000
Use Multiplier & Dilution Factor with ISTDs
  
```

Signal 1: DAD1 A, Sig=312,4 Ref=450,100

Peak #	RetTime [min]	Type	Width [min]	Area [mAU*s]	Height [mAU]	Area %
1	1.655	BV	0.0914	38.79577	5.70398	0.1188
2	1.734	VV	0.0722	29.63231	6.14753	0.0908
3	1.884	VV	0.1061	32.46377	5.11325	0.0994
4	2.069	VV	0.0814	7.12548	1.44856	0.0218
5	2.271	VB	0.1721	23.38633	1.81755	0.0716
6	2.812	BB	0.1168	8.40462	1.10433	0.0257
7	3.228	BV	0.1816	61.27242	5.04988	0.1877
8	3.589	VB	0.1485	17.94049	1.82743	0.0549
9	7.354	BB	0.2392	35.91818	2.21525	0.1100
10	9.318	BV	0.2160	3.13325e4	2314.21509	95.9593
11	10.136	VB	0.4976	1064.42834	26.22259	3.2599

Sample Name: Octocrylene, padimate O, 2-ethyl 1:1000

Peak #	RetTime [min]	Type	Width [min]	Area [mAU*s]	Height [mAU]	Area %
Totals :				3.26518e4	2370.86546	

Signal 2: DAD1 B, Sig=350,8 Ref=450,100

Peak #	RetTime [min]	Type	Width [min]	Area [mAU*s]	Height [mAU]	Area %
1	1.646	BV	0.1039	27.07723	3.43750	0.8111
2	1.734	VV	0.0609	12.38306	3.21858	0.3709
3	1.891	VV	0.1017	26.80337	4.48341	0.8029
4	2.068	VV	0.0801	5.57941	1.15945	0.1671
5	9.315	BB	0.1092	3252.81323	455.85028	97.4400
6	9.847	BV	0.0973	13.61739	2.16644	0.4079
Totals :				3338.27369	470.31566	

=====
*** End of Report ***