

# Are diversification rates and chromosome evolution in the temperate grasses (Pooideae) associated with major environmental changes in the Oligocene-Miocene?

Manuel Pimentel<sup>1</sup>, Marcial Escudero<sup>2</sup>, Elvira Sahuquillo<sup>1</sup>, Miguel Ángel Minaya<sup>3</sup> and Pilar Catalán<sup>4,5</sup>

<sup>1</sup> Evolutionary Biology Research Group (GIBE), Department of Biology, University of A Coruña, A Coruña, Galicia, Spain

<sup>2</sup> Department of Plant Biology and Ecology, University of Sevilla, Sevilla, Andalucía, Spain

<sup>3</sup> Department of Molecular Microbiology and Immunology, St. Louis University, Saint Louis, MO, United States of America

<sup>4</sup> High Polytechnic School of Huesca, University of Zaragoza, Huesca, Aragón, Spain

<sup>5</sup> Department of Botany, Institute of Biology, Tomsk State University, Tomsk, Russia

## ABSTRACT

The Pooideae are a highly diverse C3 grass subfamily that includes some of the most economically important crops, nested within the highly speciose core-pooid clade. Here, we build and explore the phylogeny of the Pooideae within a temporal framework, assessing its patterns of diversification and its chromosomal evolutionary changes in the light of past environmental transformations. We sequenced five plastid DNA loci, two coding (*ndhF*, *matk*) and three non-coding (*trnH-psbA*, *trnT-L* and *trnL-F*), in 163 Poaceae taxa, including representatives for all subfamilies of the grasses and all but four ingroup Pooideae tribes. Parsimony and Bayesian phylogenetic analyses were conducted and divergence times were inferred in BEAST using a relaxed molecular clock. Diversification rates were assessed using the MEDUSA approach, and chromosome evolution was analyzed using the chromEvol software. Diversification of the Pooideae started in the Late-Eocene and was especially intense during the Oligocene-Miocene. The background diversification rate increased significantly at the time of the origin of the Pooideae + Triticoideae clade. This shift in diversification occurred in a context of falling temperatures that potentially increased ecological opportunities for grasses adapted to open areas around the world. The base haploid chromosome number  $n = 7$  has remained stable throughout the phylogenetic history of the core pooids and we found no link between chromosome transitions and major diversification events in the Pooideae.

**Subjects** Biodiversity, Evolutionary Studies, Plant Science

**Keywords** Chromosome changes, Diversification rates, Evolution, C3 grasses, Phylogeny, Polyploidy, Pooideae

Submitted 27 June 2017  
Accepted 26 August 2017  
Published 22 September 2017

Corresponding author  
Manuel Pimentel, mpimentel@udc.es

Academic editor  
Jeffrey Ross-Ibarra

Additional Information and  
Declarations can be found on  
page 19

DOI 10.7717/peerj.3815

© Copyright  
2017 Pimentel et al.

Distributed under  
Creative Commons CC-BY 4.0

OPEN ACCESS

## INTRODUCTION

A combination of phylogenetic inference and cytological and taxonomic diversity information is commonly used to investigate the *tempo* and *mode* of diversification and the impact of chromosome changes in diversity (e.g., [Escudero et al., 2012](#)). Here, we use such approach in order to assess the diversification of the grass subfamily Pooideae through time, as well as to analyse the impact of chromosome changes in the evolution of the subfamily.

The grass monophyletic subfamily Pooideae comprises about one third of the grasses (*ca.* 177 genera and *ca.* 3850 species *sensu* [Kellogg, 2015a](#) or *ca.* 197 genera and *ca.* 4234 species *sensu* [Soreng et al., 2015](#), including some of the most prominent crops such as wheat, rye, oats and barley ([Clayton & Renvoize, 1986](#); [GPWG, 2001](#); [Kellogg, 2015a](#)). Its phylogenetic structure has been thoroughly studied (e.g., [GPWG, 2001](#); [Bouchenak-Khelladi et al., 2008](#), and references therein), although different authors have called for larger datasets to increase the robustness of the results ([GPWG, 2012](#); [Soreng et al., 2015](#); [Saarela et al., 2015](#)).

The systematic positions of the different tribes and subtribes within the Pooideae are currently under discussion, and their evolutionary relationships are not totally resolved (e.g., [Bouchenak-Khelladi et al., 2008](#); [Pirie et al., 2008](#); [Sanchez-Ken & Clarke, 2010](#); [Cahoon et al., 2010](#); [GPWG, 2012](#); [Soreng et al., 2015](#); [Kellogg, 2015a](#)). The tribal arrangement of the Pooideae has varied widely over the last century (e.g., [Ascherson & Graebner, 1898–1902](#); [Clayton & Renvoize, 1986](#); [Tzvelev, 1989](#); [Watson & Dallwitz, 1992](#); [Kellogg, 2015a](#); [Soreng et al., 2015](#)) and thirteen tribes have been long recognised in the subfamily based on combined molecular and morphological data ([Hsiao et al., 1995](#); [Catalán, Kellogg & Olmstead, 1997](#); [GPWG, 2001](#)). Recent works with broader sampling have uncovered inconsistencies in this taxonomic arrangement ([Gillespie, Archambault & Soreng, 2007](#); [Quintanar, Castroviejo & Catalán, 2007](#); [Catalán et al., 2007](#); [Döring et al., 2007](#); [Soreng et al., 2007](#); [Soreng et al., 2015](#); [Saarela et al., 2010](#)) and a wide range of taxonomic changes have been suggested ([Jacobs et al., 2007](#); [Schneider et al., 2009](#); [Soreng et al., 2015](#)). The Aveneae and Poeae tribes were merged into a supertribe Poodae (including tribes Hainardeae, Phleae and Seslerieae ([Macfarlane & Watson, 1982](#); [Macfarlane, 1987](#); [Watson & Dallwitz, 1992](#)) or tribe Poeae *s.l.* ([Davis & Soreng, 2007](#); [Soreng et al., 2003](#); [Soreng et al., 2007](#); [Quintanar, Castroviejo & Catalán, 2007](#)) based on molecular phylogenetic evidence. Poodae has been split into 19 or 21 subtribes, arranged into two groups based on plastid DNA ([Fig. S1](#)). In the most recent classification, twelve subtribes (plus the *incertae sedis* *Avenula—Homalotrichon*) belong to the Poeae-type plastid DNA clade and seven to the Aveneae-type plastid DNA clade ([Soreng et al., 2015](#)). Different studies focusing on some particular subtribes have suggested that further changes to the taxonomy of the supertribe Poodae may be necessary (e.g., [Catalán, 2006](#); [Saarela et al., 2010](#)). A supertribe Triticodae ([Macfarlane & Watson, 1982](#)) has also been proposed including three tribes: Bromeae, Triticeae (encompassing subtribes Triticinae and Hordeinae) and the recently created Littledaleae ([Soreng et al., 2015](#)). The sisters Poodae and Triticodae constitute the “core pooids”, a highly speciose lineage formed by taxa

showing some of the largest genomes of grasses due to the accumulation of transposons (e.g., [Kellogg, 2015b](#)).

Dated grass phylogenies (most of them primarily focused in C4 grasses; [Vicentini et al., 2008](#); [Bouchenak-Khelladi et al., 2010](#)) have placed the diversification of the BOP (Bambusoideae, Oryzoideae and Pooideae, *sensu* [Soreng et al., 2015](#)) clade between the Late Paleocene and the Early Oligocene ([Vicentini et al., 2008](#)), although dates are heavily dependent on the choice of fossils for calibration (e.g., [Christin et al., 2008](#); [Strömberg, 2011](#)). Diversification within the Pooideae took place mostly during the Oligocene and in the Neogene, in a process that paralleled the expansion of grasslands ([Edwards et al., 2010](#); [Spriggs, Christin & Edwards, 2014](#)), although whether both processes were coupled is still an open question ([Strömberg, 2005](#)). Deep climatic transformations accompanied the diversification and ecological expansion of the Pooideae ([Edwards et al., 2010](#)), although this process differed widely across regions ([Strömberg, 2005](#)). Generally speaking, drought-tolerant grasses were already present in the Eocene, and they became common in fossil assemblages from the Miocene ([Strömberg, 2005](#)). This process is coincident with the Neogene (and the Oligocene) climatic deterioration, characterised by a fall in temperatures and CO<sub>2</sub> atmospheric concentration ([Retallack, 2001](#)).

Different methods have been used to measure diversification rates in angiosperms, producing contrasting results (e.g., [Magallón & Sanderson, 2001](#); [Magallón & Castillo, 2009](#)). Rates in the Poales have been estimated to be between  $r = 0.0611$  spp. Myr<sup>-1</sup> and  $r = 0.1013$  spp. Myr<sup>-1</sup>, depending on the parameters of the analysis ([Magallón & Sanderson, 2001](#); [Magallón & Castillo, 2009](#)); however, no information on rates is available for the Pooideae. Regarding chromosome base numbers in the subfamily,  $x = 7$  is considered to be the most common base number in most groups (e.g., Triticeae, [Salse et al., 2008](#); Pooideae, [Hsiao et al., 1995](#)). A decreasing aneuploid series was proposed for this subfamily ([Catalán, Kellogg & Olmstead, 1997](#)), ranging from  $x = 13$ ,  $x = 10$  in the earlier splitting Lygeae (and Brachyelytreae,  $x = 11$ ; [Saarela et al., 2003](#)), through  $x = 12$ , 11, 10, 9, 8 in the successively diverged Stipeae, Meliceae and Brachypodieae, to  $x = 7$  in the more recently split core pooids (Pooideae + Triticoideae, including the former tribes Poeae and Aveneae and Triticeae and Bromoideae). A reduction to very small chromosome base numbers has also been documented in some pooid lineages (e.g.,  $x = 5$  Brachypodieae ([Catalán & Olmstead, 2000](#));  $x = 5$  Anthoxanthinae ([Pimentel et al., 2013](#));  $x = 2$  *Zingeria* P.A.Smirn. and *Colpodium* Trin. ([Kim et al., 2009](#))). Polyploidization is common in many Pooideae and it is often linked to reticulate evolution (e.g., [Catalán, 2006](#)). The effects of chromosome mutations (including polyploidization) in the diversification of plants are controversial, and two main different views have been put forward: polyploids as evolutionary “dead-ends” (e.g., [Mayrose et al., 2011](#)) and polyploidy as a major force of plant evolution (e.g., [Soltis et al., 2009](#)). A third view suggests that the relationship has not been properly tested yet ([Kellogg, 2016](#)).

We have analyzed five plastid DNA loci in order to build a robust phylogenetic analysis of the Pooideae (77% of *GPWG's* (2001) or 71,4% of [Soreng et al. \(2015\)](#) tribes represented in our survey; [Appendix S1](#)). Phylogenetic data, together with diversity and cytogenetic information allowed us to assess diversification through time in this group, as well as to infer

trends of chromosome number evolution. We expected an increase in net diversification rates in the most speciose groups within the Pooideae, as well as a correlation between diversification in the core Pooideae and the Neogene climatic deterioration (cf. [Strömberg, 2005](#); [Vicentini et al., 2008](#)). A relationship between diversification shifts and chromosome changes was also expected, although the effect of chromosome mutations on diversification is controversial (e.g., [Soltis et al., 2014](#)). More specifically, our aims were to: (i) analyze the diversification dynamics of the Pooideae, including the timing of divergence and the diversification rates of its main lineages; (ii) investigate the patterns of evolution of chromosomal changes operating in the core pooids, and (iii) assess the possible correlation between times of divergence, diversification rates and patterns of chromosome evolution of the main Pooideae lineages with major climatic and biome changes that occurred on Earth throughout the Cenozoic.

## MATERIALS AND METHODS

### Sampling, DNA sequencing

A total of 163 species (85 genera, 61 in Pooideae) representing nine subfamilies within the Poaceae ([GPWG, 2001](#)) were included in this study. Sample details, including source, Genbank accession number and voucher information are included in [Appendix S1](#). Sampling focused mainly on subfamily Pooideae and all currently accepted tribes ([Soreng et al., 2015](#)) except Littledaleae, Ampelodesmeae, Phaenospermateae and Brylkinieae (realigned within Meliceae, ([Schneider, 2013](#)) or separated from it ([Soreng et al., 2015](#))) were included in the survey. Representatives from other BOP groups and from several PACMAD ([Duvall et al., 2007](#)) lineages were added to increase the robustness of the Pooideae tree ([Appendix S1](#)). DNA sequences from five plastid DNA (cpDNA) regions, two coding (*matK*, *ndhF*) and three non-coding spacers (*trnT-L*, *trnL-F*, *trnH-psbA*) loci, were used in the phylogenetic analysis. Procedures for DNA isolation, amplification and sequencing and for sequence alignment are indicated in [Appendix S2](#).

### Phylogenetic analyses

Separate cpDNA matrices were built for the different regions studied and phylogenetic analyses were conducted on individual and concatenated matrices. Concatenation was carried out since no conflicting node was supported by more than 0.95 Bayesian posterior probability support (PPS) or 90% bootstrap support (BS) ([Pirie et al., 2009](#)). Three different data sets were used: (i) coding regions; (ii) non-coding regions and (iii) complete data set. A two-fold analysis was applied to coding regions: (i) all sites were considered equally and (ii) non-synonymous and synonymous sites were independently analyzed. Missing sequences caused by PCR and/or sequencing failures were coded as missing data in the concatenated data sets, making a final data set with at least three sequenced genes per sample (five loci, 70.6%; four loci, 25.3%, three loci 4.1%; [Appendix S1](#), [Table S1](#)). Overall, 798 sequences (419 newly generated sequences, and 379 sequences downloaded from GenBank, more than 60% of which were generated in projects participated by the authors) were used in this study (154 *trnH-psbA*; 166 *trnL-F*; 161 *trnT-L*; 149 *matK* and 168 *ndhF*; [Table S1](#)).

The matrices including only coding and only non-coding regions were composed of 481 and 317 sequences, respectively.

Phylogenetic analyses were performed using maximum parsimony (MP) and Bayesian inference (BI) methods using the programs Paup v.4-10b (Swofford, 2002) and MrBayes v. 3.20 (Huelsenbeck & Ronquist, 2001), respectively. Independent analyses were conducted on each data matrix using *Joinvillea ascendens* Gaudich. ex Brongn. & Gris (Joinvilleaceae) to root the tree. The MP analysis was conducted following Catalán et al. (2012), with branch support computed through 10,000 bootstrap replicates.

The GTR + I + G model was selected for all data sets using MrModelTest v2.3 (Nylander, 2004). Gaps were coded in the matrix as presence/absence following the simple method proposed by Simmons & Ochoterena (2000) as implemented in the software SeqState (Müller, 2005). All Bayesian analyses conducted with MrBayes v.3.20 were carried out with and without gaps following Ronquist, Huelsenbeck & Van der Mark (2005) and Dwivedi & Gadagkar (2009). Searches including gap characters did not improve clade support (see Results) so gaps were excluded from all final analyses.

The Bayesian analysis of each data set was conducted with 50,000,000 generations and using a random starting tree. Sampled trees were saved every 2,000 generations and the program was allowed to estimate the likelihood parameters required. Results collected prior to stationarity (25–35%) were discarded as burn-in. Convergence was evaluated using the “compare” function in the online application AWTY (Nylander et al., 2008) and using TRACER v1.6 (Rambaut & Drummond, 2007). Fifty-percent Majority Rule consensus trees of all the saved posterior probability trees were computed for each analysis.

### Divergence time estimation

Bayesian divergence time analysis was conducted on the complete cpDNA data set using BEAST v.2.1.2 (Bouckaert et al., 2014). The GTR + I + G model, a lognormal uncorrelated relaxed clock model (Wertheim et al., 2010; Brown & Yang, 2011) and a optimal birth-death model tree prior were imposed in all the analyses. Two fossils were used as prior calibrations for two nodes of the tree following Minaya et al. (2017). Pooid phytoliths described by Zucol et al. (2010) from the Mid-Eocene (Zucol et al., 2010; Strömberg, 2011) and macrofossil remains of a stipoid grass from the Late Eocene (Manchester, 2001; Strömberg, 2011) were used to calibrate the respective crown nodes of Pooideae and Stipeae. These nodes were constrained to have mean ages of  $44 \pm 4$  Myr (mean = 44;  $SD = 1.95$ ) and  $36 \pm 3$  Myr (mean = 36;  $SD = 1.5$ ), respectively (cf. Minaya et al., 2017), and a normal distribution was used in both cases. Although normal distributions are not generally considered suitable for primary calibrations, we consider that the fossils used fulfill the conditions indicated by Ho & Phillips (2009) that make use of a normal prior advisable. Wide ranges and a uniform distribution were imposed for all substitution rates in order to cover most biologically realistic values.

Four independent Markov Chains were run for a total of 600,000,000 generations. The impact of the prior on posterior values was assessed following Drummond & Bouckaert (2015). We used TRACER v1.6 to analyse the log files and to assess convergence through the effective sample size ( $ESS \geq 200$ ; Drummond & Rambaut, 2007). Resulting trees from the

four searches were combined using LogCombiner v.1.7.2 ([Drummond & Rambaut, 2007](#)) with a burn-in of 25%. A maximum credibility tree was constructed using TreeAnnotator v.1.7.2 ([Drummond & Rambaut, 2007](#)). Trees were represented using the R package *strap* (Stratigraphic Tree Analysis for Palaeontology; [Bell & Lloyd, 2014](#)).

### Diversification rates in the Pooideae

We used MEDUSA ([Alfaro et al., 2009](#)) as implemented in the R package Geiger ([Harmon et al., 2008](#); [R Development Core Team, 2011](#)) in order to test for changes in net diversification rates in the Pooideae. This approach is based on the equations from the birth-death likelihood model described by [Rabosky \(2006\)](#) and [Rabosky et al. \(2007\)](#). MEDUSA uses the Akaike Information Criterion (AIC) to compare different models, each model including a particular combination of phylogenetic relationships and taxonomic data (species richness of extant groups) with particular values of diversification and relative extinction ([Alfaro et al., 2009](#)).

MEDUSA analyses were carried out using a skeleton-phylogenetic tree which was constructed by pruning the original time-calibrated tree with the drop.tip option in the R package APE ([Paradis, Claude & Strimmer, 2004](#); [R Development Core Team, 2011](#)). In the analysis, we considered nine out of the twelve Pooideae tribes and supertribes defined by [Soreng et al. \(2015\)](#) (Brachyelytreae, Meliceae, Lygeae, Nardeae, Stipeae, Diarrheneae, Brachypodieae, and the supertribes Poodae and Triticodae, *sensu* [Soreng et al., 2015](#)) that were sampled and reconstructed as monophyletic groups in our plastid tree (see Results). One sample per tribe was included in the skeleton tree except for the supertribes Triticodae and Poodae: two samples were added for the Triticodae representing tribes Bromeae and Triticeae and a larger representation of 13 out of 19 subtribes (~96,6% of the Poodae diversity; cf. [Clayton et al., 2006](#); [Soreng et al., 2015](#)) was included for the Poodae. Species diversity in each tribal and subtribal lineage was extracted from [Kellogg \(2015a\)](#) and [Soreng et al. \(2015\)](#), and independent analyses were carried out using diversity matrices obtained from both sources. Diversity values must be considered cautiously, as they may vary as new taxonomic information is generated. Nevertheless, they constitute reasonable proxies for the relative diversity of groups, which is essential in tracing global diversification patterns (e.g., [Laenen et al., 2014](#)). In order to incorporate species richness uncertainty in the test, 500 additional analyses were run using diversity matrices built by randomly drawing diversity values for each tribe or subtribe from a data base including: the number estimated as explained above and the maximum and minimum diversity values (the estimate  $\pm$  20%). Phylogenetic uncertainty was also accounted for in the analyses by conducting new tests using 500 randomly sampled pruned trees ([Drummond et al., 2012](#)). For all analyses, we estimated  $\Delta$ AICs and net diversification and relative extinction rates. The maximum number of models was set to 47 (sum of the tips and nodes of the trees after pruning to major clades; [Escudero & Hipp, 2013](#)) and results were summarized following [Escudero & Hipp \(2013\)](#).

We also used Bayesian Analyses of Macroevolutionary Mixtures (BAMM, [Rabosky et al., 2013](#); [Rabosky et al., 2014a](#); [Shi & Rabosky, 2015](#)) to detect and quantify heterogeneity in diversification rates, as implemented in software BAMM v. 2.5 and R package *BAMMtools*

(*Rabosky et al., 2014b*). This approach acknowledges that a complex mixture of dynamic diversification regimes may occur in a single tree. Accordingly, this approach allows speciation and extinction rates to vary both through time and among lineages. To account for incomplete sampling, we specified partial sampling fractions for each subtribe clade (or tribes when subtribes were not used), based on the percentage of species sampled from each subtribe clade. We performed two different analyses. First, we conducted a test in which diversification rates remain constant through time unless a shift in diversification rates is detected (this is basically the same approach implemented in MEDUSA). Second, we performed an analysis in which diversification rates change through time within each diversification regime. In addition, shifts in diversification rates are also allowed. For each analysis we ran BAMM for 10 million generations. We used the R package *coda* (*Plummer et al., 2006*) to assess MCMC convergence. Finally, *BAMMtools* R package was used to postprocess the BAMM output and to visualize and summarize the parameters of the diversification regimes with highest posterior probabilities.

### Patterns of chromosome number evolution

The chromosomal evolution of the Pooideae was modeled on the Bayesian dated phylogenetic tree produced with BEAST using the software CHROMEVOl v. 2.0 (*Mayrose, Barker & Otto, 2010*). This program implements a likelihood-based method for tracking the pattern of haploid chromosome number changes along a phylogeny (*Mayrose, 2014*). This analysis aims at reconstructing ancestral haploid chromosome numbers, but it makes no reference (and it does not require) the calculation of the inferred chromosome base number  $x$  (*Mayrose, Barker & Otto, 2010; Cusimano, Sousa & Renner, 2012*). In our study, haploid chromosome numbers for the sampled species were coded following the “informed” coding scheme proposed by *Cusimano, Sousa & Renner (2012)*. We took into account phylogenetic information on the different genera included in the analysis, and we assigned chromosome numbers found in the early diverging species to the entire genus (*Cusimano, Sousa & Renner, 2012*). When no precise phylogenetic information was available for a genus, the lowest haploid chromosome number was applied. This coding scheme allowed us to deal with the problem of the existence of different ploidy levels in a species and also the low-density sampling conducted in most Pooideae taxa. Chromosome data were taken from our own records and from public databases and literature (e.g., *Goldblatt & Johnson, 1979; Watson & Dallwitz, 1992; Catalán et al., 2004; Gillespie & Soreng, 2005; Winterfeld, Döring & Röser, 2009; Winterfeld, Perner & Röser, 2011; Bennett & Leitch, 2012; Tropicos.org; Table S2*). The input tree was pruned to eliminate all terminals for which chromosome numbers were unknown using the package APE (126 terminals were included in the analysis). The ten models of chromosome evolution in CHROMEVOl v. 2.0 are based on different combinations of three to six of the following eight parameters of rates of chromosome mutation: (1) whole genome duplication; (2) demi-polyploidization (half-duplication of the chromosome number through auto- or allopolyploidization; *Mayrose, Barker & Otto, 2010*); (3) gain or (4) loss of a single chromosome (dysploidy); (5) gain or (6) loss of a single chromosome when ascending or decreasing dysploidy rates depend on the current number of chromosomes; (7) an optimized chromosome number

which characterizes a phylogenetic group; and (8) rate for transitions by base number (Mayrose, Barker & Otto, 2010; Glick & Mayrose, 2014). The fit of each of the ten available models was investigated using the AIC (Bournham & Anderson, 2002). Our analysis focused on the better sampled core poidids (including the supertribes Triticoideae and Pooideae). All taxa from this group for which chromosome numbers from early diverging lineages were found were included.

## RESULTS

### Phylogenetic reconstruction and divergence times

The number of sequences used in the analysis, the number of aligned bases per gene and the percentage of parsimony informative characters in each data set are summarized in Table S1. A higher average number of parsimony informative positions was observed in coding than in non-coding regions (51.01% vs 31.21%), although the difference was not significant. The topologies recovered in the Bayesian (MrBayes and BEAST) and parsimony trees (Figs. S1 and S2) were congruent and only the Bayesian topology recovered with BEAST will be discussed.

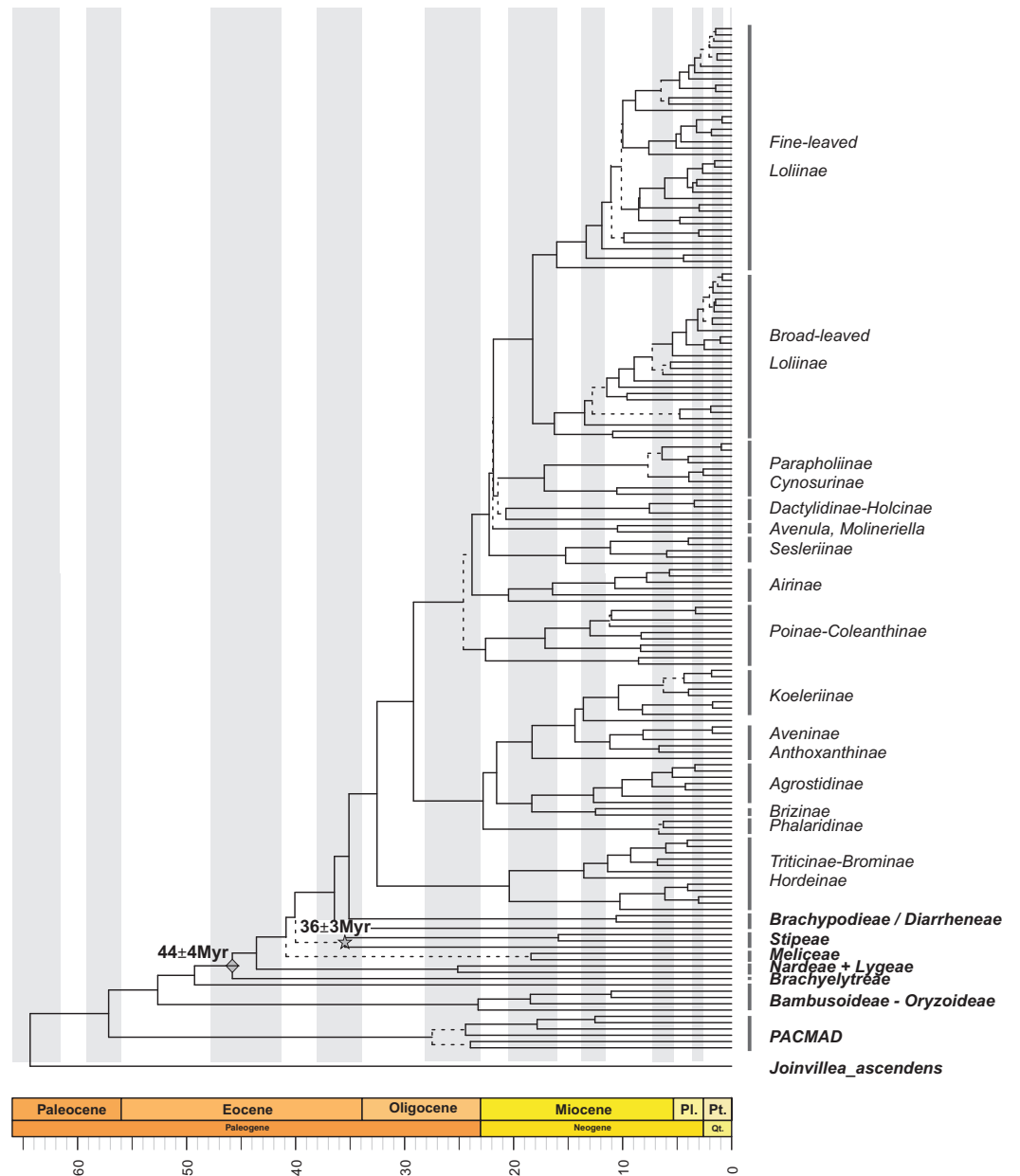
Bayesian phylogenetic trees from the different cpDNA data sets were congruent (results not shown) in topology, although trees based on coding regions (*matK*, *ndhF*) recovered higher posterior probability values. Special attention was paid to the *trnH-psbA* plastid region since micro-inversions have been detected by different authors (e.g., Romaschenko *et al.*, 2012). No supported differences in topology were found in the *trnH-psbA*-based tree with respect to the other plastid topologies and overall support values in the global plastid tree increased when the *trnH-psbA* region was considered.

The concatenated data set built using the five plastid regions included 163 taxa (Appendix S1, Table S1) and 5,588 characters, 26% of which (1,505) were parsimony informative. Within the BOP clade (Bambusoideae, Oryzoideae, Pooideae; Clark, Zhang & Wendel, 1995), the Oryzoideae was sister to a clade including the Pooideae and the Bambusoideae with moderate support (Posterior probability support -PPS- 0.92; Fig. 1). In the PACMAD clade there was a split of two highly supported lineages (PPS 1.0), one including Danthonioideae and Chloridoideae and another comprising Panicoideae (including Centothecoideae, Sanchez-Ken & Clarke, 2010) and Arundinoideae.

Within the Pooideae, all tribes defined by the GPWG (2001) but Stipeae were recovered as monophyletic with strong support (Fig. 1; Fig. S1). According to our estimations, the split of the poidids took place from the Mid-Eocene onwards. The ancestor of the early diverging lineage leading to the Brachyelytreae (PPS 1.0) (i.e., Most Recent Common Ancestor (MRCA) of Pooideae), likely originated around 45.5 Myr (High Posterior Density (HPD) 42.5–48.1 Myr). The estimated ages of the MRCAs of the consecutive splits leading to Nardeae *s.l.* (*sensu* Schneider *et al.*, 2009, including Lygeae) (43.2 Myr, (HPD, 39.7–45.6 Myr), PPS 0.98), Meliceae (40.3 Myr (HPD 38.2–44.3 Myr), PPS 0.99) and Stipeae (with low support, 39.4 Myr (HPD 34.9–43.2 Myr), PPS 0.3) were dated in the Mid to Late Eocene.

Most of the Pooideae lineages branched off during the Oligocene and Miocene (Fig. 1; Fig. S1). The MRCAs of Diarrheneae (37 Myr (HPD 32.8–41.6 Myr), PPS 0.98) and





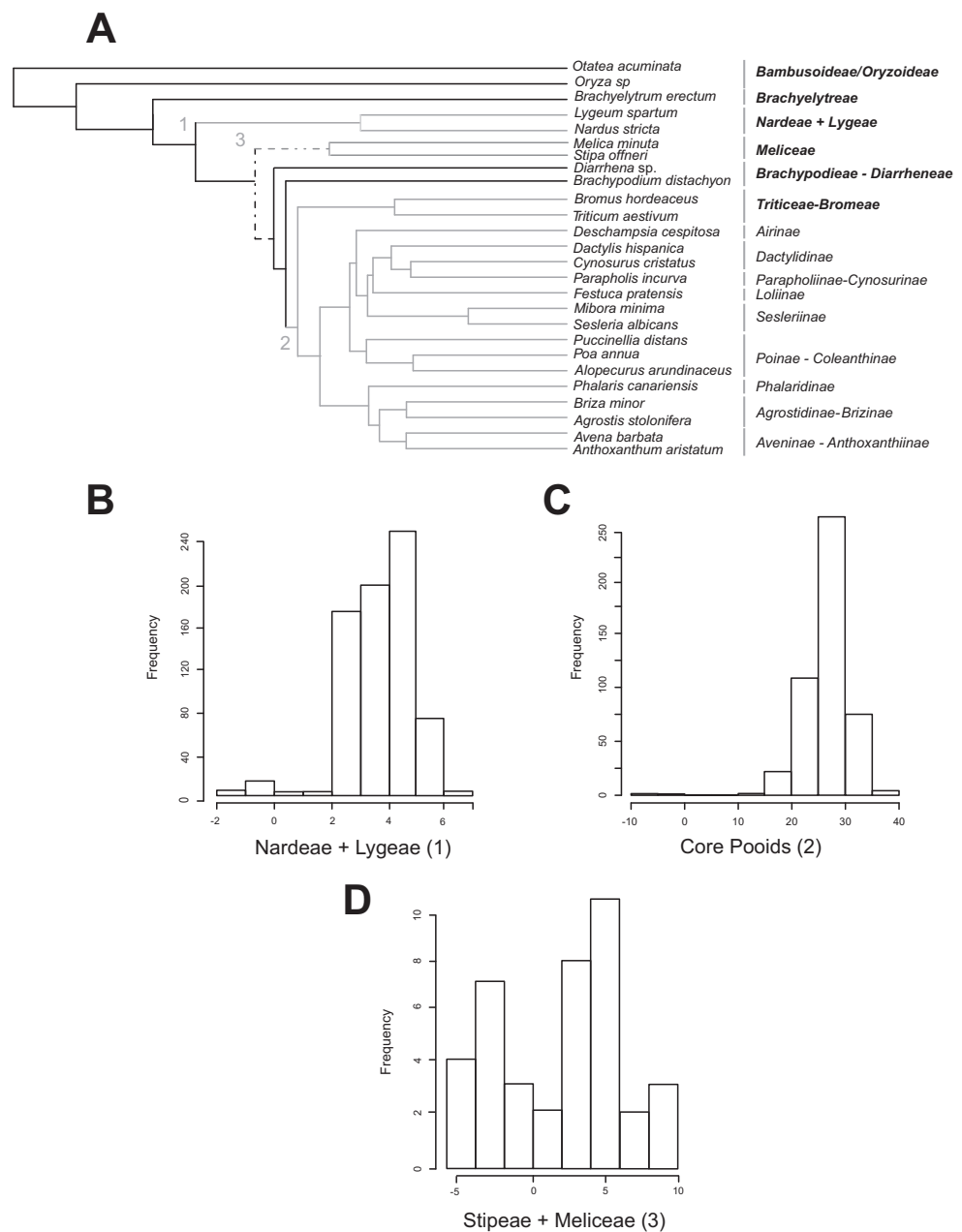
**Figure 1** Maximum clade credibility tree from the Bayesian analysis of plastid DNA sequences (*trnH-psbA*, *trnT-L*, *trnL-F*, *ndhF* and *matk*). Maximum clade credibility tree from the Bayesian analysis of plastid DNA sequences (*trnH-psbA*, *trnT-L*, *trnL-F*, *ndhF* and *matk*) from 163 samples representing 152 Pooideae, 6 PACMAD, 3 Bambusoideae and 1 Oryzoideae grass species and *Joinvillea ascendens* as out-group, constructed with BEAST using a Yule prior. Divergence times were inferred using a relaxed molecular clock. Dashed lines represent branches with  $PPS < 0.8$ . Mes., Mesozoic; Cr., Cretaceous; Oligo., Oligocene; Pl., Pliocene; Pt., Pleistocene; Qt., Quaternary. Diamond and star symbols indicate the fossil-based calibration priors imposed to the crown nodes of Pooideae and Stipeae, respectively.

Brachypodieae (35.7 Myr (HPD 31.1–40 Myr), PPS 0.95) were estimated to have diverged in the Late Eocene-Early Oligocene (Fig. 1), those of Triticodae and Poodae (33.5 Myr (HPD 29.2–38.3 Myr), PPS 1) in the Early Oligocene, and those of Bromae and Triticeae in the Early to Mid-Miocene (21.3 Myr (HPD 14.6–28.7 Myr), PPS 0.99).

Within the Poodae, the split of the sister “Aveneae-type cpDNA” and “Poeae-type cpDNA” lineages (*sensu* Soreng *et al.*, 2003; Soreng *et al.*, 2007; Soreng *et al.*, 2015) was inferred to have occurred in the Early Oligocene (30.6 Myr (HPD 25.9–34.9 Myr), PPS 0.99). Within the former clade, our data supported the early divergence of the Phalaridinae lineage in the Late Oligocene (24.1 Myr (HPD 18.9–29.5 Myr), PPS 0.97), then the split of Agrostidinae and Brizinae (including *Airopsis* Desv.), and then the more recent divergence of Koeleriinae and Aveninae in the Mid-Miocene (15.4 Myr (HPD 11.2–19.8 Myr), PPS 0.99). Within the second clade our analysis inferred the successive splits of the Poinae / Coleanthinae (26.2 Myr (HPD 19.6–27.5 Myr), PPS 0.97) and the Airinae (25.3 Myr (HPD 21.4–29.3 Myr), PPS 0.80) in the Late Oligocene, and those of the Sesleriinae (including *Mibora* Adans.) (23.7 Myr (HPD 20–27.7 Myr), PPS 0.95) and the Loliinae (22.9 Myr (HPD 19.3–26.5 Myr), PPS 0.96) in the Late Oligocene-Early Miocene (Fig. 1; Fig. S1). Our results supported an Early Miocene (20 Myr (HPD 15.9–23.7 Myr)) divergence for the well supported broad-leaved and fine-leaved lineages of Loliinae (Catalán *et al.*, 2004). Diversification within these clades took place mostly between the Late Miocene and the Pleistocene; and their phylogenetic reconstruction fully agreed with Inda *et al.* (2008), Inda *et al.* (2013) and Minaya *et al.* (2017).

### Rates of diversification in the Pooideae. Evolutionary shifts

All MEDUSA analyses conducted were largely congruent, and only results using Soreng *et al.* (2015) diversity data and integrating diversity and phylogenetic uncertainty will be discussed (see ‘Materials and Methods’). Our results based on 500 random diversity data sets and one pruned phylogenetic tree recovered three significant ( $\Delta AIC$  greater than 2.0, gray branches, Fig. 2A) shifts from the background diversification rate (net diversification rate =  $r = 0.098$  ( $SD = 0.0022$ ) spp. Myr<sup>-1</sup>, relative extinction rate =  $\varepsilon = 0.271$  ( $SD = 0.344$ )): (1) a weakly supported decrease in net diversification rates affecting the Nardeae + Lygeae (*Nardus* L. + *Lygeum* Loefl.): 248 out of 500 analyses showed decreased net diversification rates ( $\Delta AIC = 2.063$ ;  $r = 0.0159$  ( $SD = 0.001$ ) spp. Myr<sup>-1</sup>,  $\varepsilon = 3.700 \bullet 10^{-7}$  ( $SD = 0.00$ )); (2) a strongly supported increase in net diversification rates affecting the lineage comprising the core pooids (Triticodae + Poodae): 490 out of 500 analyses showed increased net diversification rates ( $\Delta AIC = 22.41$ ; net diversification rate =  $r = 0.277$  ( $SD = 0.005$ ) spp. Myr<sup>-1</sup>, relative extinction rate =  $\varepsilon = 0.021$  ( $SD = 0.0755$ )); (3) a moderately to strongly supported increase in net diversification rates in the Meliceae + Stipeae: 381 out of 500 tests showed increased net diversification rates ( $\Delta AIC = 4.42$ ;  $r = 0.1896$  ( $SD = 0.004$ ) spp. Myr<sup>-1</sup>,  $\varepsilon = 0.00014$  ( $SD = 1.66 \bullet 10^{-4}$ )). The tests conducted using one diversity matrix and 500 pruned phylogenetic trees (Figs. 2B–2D) also recovered significant deviations from the background diversification rates ( $r = 0.127$  ( $SD = 0.0008$ ) spp. Myr<sup>-1</sup>,  $\varepsilon = 0.0041$  ( $SD = 0.035$ ): (1) Nardeae + Lygeae (435 out of 500 trees showed decreased net diversification rates;  $\Delta AIC = 3.92$ ;  $r = 0.0139$  ( $SD = 0.033$ ) spp. Myr<sup>-1</sup>,  $\varepsilon = 0.063$



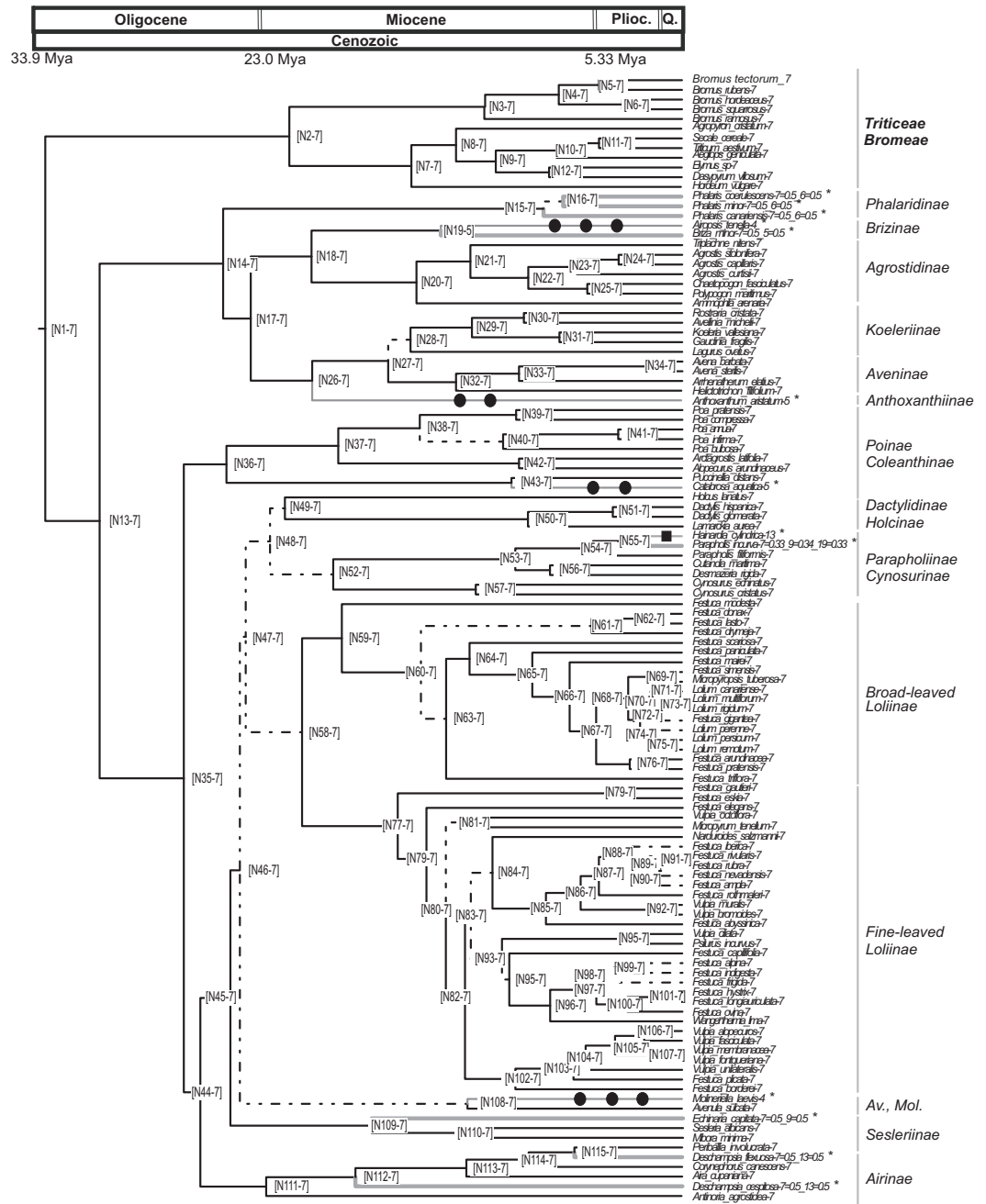
**Figure 2** Shifts in diversification detected for the Pooideae using the MEDUSA approach. (A) Pruned (26 terminals) ultrametric Bayesian consensus tree obtained with BEAST (for details see ‘Materials and Methods’). Gray branches represent significant shifts from the background rate as estimated with the algorithm MEDUSA using 500 diversity data sets obtained from [Soreng et al. \(2015\)](#); for details see ‘Materials and Methods’). Shift numbers are indicated on branches: 1, Nardeae and Lygeae; 2, Core pooids; 3, Meliceae + Stipeae. Numbers as in [Fig. 4](#). Dashed lines represent branches with support below 0.8 PPS. (B–D) Histograms showing the diversification rate analysis conducted with MEDUSA using 500 random Bayesian trees and the diversity data set based on [Soreng et al. \(2015\)](#); for details see ‘Materials and Methods’). Each histogram represents a significant shift in diversification rates. B, Nardeae + Lygeae; C, Core pooids; D, Stipeae + Meliceae. The X-axis represents the amount of change in the AIC value. The Y-axis represents the frequency of the rate shift (number of trees where the change is registered). Names of lineages correspond to the most updated tribal classification of the Pooideae ([Soreng et al., 2015](#)). Shift numbers are indicated in the histograms.

( $SD = 0.02$ ); Fig. 2B); (2) the core poidids (460 out of 500 trees showed highly increased net diversification rates;  $\Delta AIC = 26.74$ ;  $r = 0.227$  ( $SD = 0.029$ ) spp. Myr<sup>-1</sup>,  $\varepsilon = 0.025$  ( $SD = 0.033$ ); Fig. 2C) and (3) Stipeae + Meliceae (30 out of 500 trees showed increased net diversification rates;  $\Delta AIC = 2.0$ ;  $r = 0.147$  ( $SD = 0.015$ ) spp. Myr<sup>-1</sup>,  $\varepsilon = 0.00032$  ( $SD = 0.000012$ ); Fig. 2D).

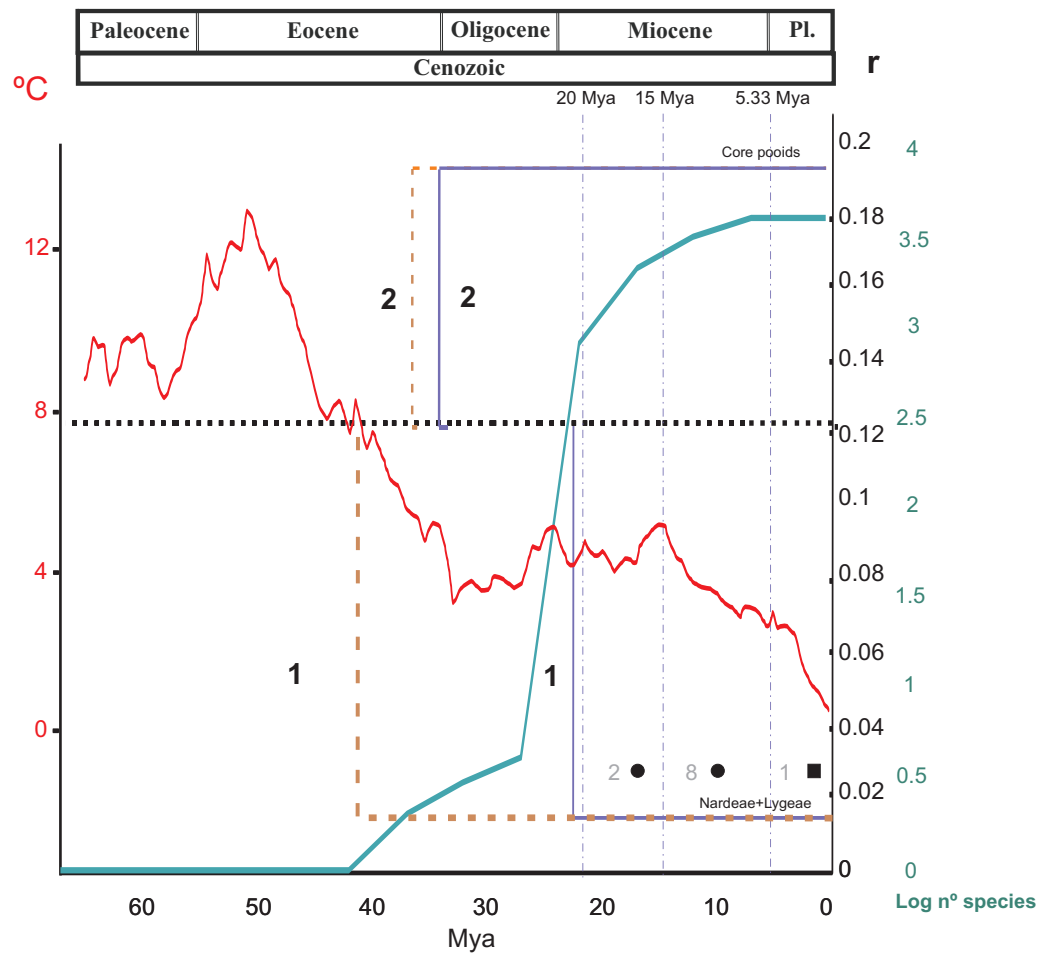
BAMM analyses supplied results that were mostly congruent with the results obtained from MEDUSA analyses. We report the results of the diversification model with the highest posterior probability. Two evolutionary regimes with one shift in diversification rates were preferred when diversification rates were constrained to remain constant within the regimes. This model inferred a background regime with initial speciation and extinction rates of 0.17733 spp. Myr<sup>-1</sup> and 0.07696 spp. Myr<sup>-1</sup> (net diversification = 0.10037 spp. Myr<sup>-1</sup>), respectively, and a shift in diversification at the origin of the core poidids (supertribes Poodae + Triticodae) clade with initial speciation and extinction rates of 0.61166 spp. Myr<sup>-1</sup> and 0.39408 spp. Myr<sup>-1</sup> (net diversification = 0.21758 spp. Myr<sup>-1</sup>), respectively. Three evolutionary regimes with two shifts in diversification rates were preferred when speciation rates were allowed to change within each regime. This model inferred a background regime with initial speciation and extinction rates of 0.51053 spp. Myr<sup>-1</sup> and 0.55409 spp. Myr<sup>-1</sup>, respectively, and a growth parameter of speciation rates of 0.01308. A first shift in diversification at the origin of the clade of the sister lineages Nardeae and Lygeae (Nardeae *s.l. sensu* Schneider et al., 2009) with initial speciation and extinction rates of 0.08383 spp. Myr<sup>-1</sup> and 0.10388 spp. Myr<sup>-1</sup>, respectively, and a decay parameter of speciation rates of -0.00237. And a second shift in in diversification at the origin of the clade of the tribe Brachyelytreae with initial speciation and extinction rates of 0.09514 spp. Myr<sup>-1</sup> and 0.20010 spp. Myr<sup>-1</sup>, respectively, and a decay parameter of speciation rates of -0.00099.

### Evolution of chromosome numbers in the core poidids

The analysis conducted using CHROMEVOL (Mayrose, Barker & Otto, 2010) on the core poidids showed that the best-fitting model of chromosome number evolution indicated an underlying haploid chromosome number of seven (not necessarily the chromosome number at the root of the core poidids; Mayrose, 2014). The selected model (AIC: 92.294) included the following parameters: base number (a specified chromosome number that characterises a phylogenetic group; Mayrose, 2014), transitions by base number given the base number of the phylogeny (Mayrose, 2014) and gain and loss of single chromosomes (For the AIC values of the other models supported by the program see Table S3). Our results indicated that in the core poidids the loss of single chromosomes is by far the most frequent chromosome mutation (although with a low prevalence; single chromosome loss = 0.00618 mutations/Myr), whereas the transitions by base number show a rate of transition (0.000289 mutations/Myr) an order lower than the loss of single chromosomes. The analysis recovered evidence for 11 chromosome number transitions that occurred over the last 20 million years: one transition in the haploid chromosome number (1 transition by base number) and 10 chromosome losses (Fig. 3). Losses of single chromosomes were inferred to be independent of the current chromosome numbers in the lineages. Putative



**Figure 3** Pruned ultrametric MCC tree produced with BEAST. Pruned ultrametric MCC tree produced with BEAST (for details see ‘Materials and Methods’). Gray thin branches represent significant changes in haploid chromosome number from the background value  $n = 7$  detected using CHROMEVOL. Affected terminals are indicated with an asterisk. Filled square, transition in base number; filled circle, haploid chromosome number transition based on single chromosome loss. Dashed lines represent branches with  $PPS < 0.9$ . Thick gray lines represent events not accounted for in the simulation. Plioc, Pliocene. Q, Quaternary.



**Figure 4 Summary of the results of the diversification rate analysis and the chromosome evolution analysis.** Summary of the results of the diversification rate analysis and the chromosome evolution analysis across different temporal slices (TS) related to the divergences of the main Pooideae lineages. TSI, before 20 Myr; TSII, 20–15 Myr, TSIII, 15–5.33 Myr, TSIV, 5.33 Myr–present. 1 and 2 indicate shifts in diversification rates affecting, respectively, the *Nardeae s.l.* (*Nardeae* + *Lygeae*) and the core poods (*Triticoideae* + *Pooideae*). The black dashed line represents the background diversification rate estimated from 500 ultrametric trees randomly selected from the BEAST results ( $r = 0.127$ ; see ‘Materials and Methods’). For each case (1–2), the brown and blue lines represent shifts in diversification rates of, respectively, their stem and crown nodes. Shifts affecting the poorly supported *Meliceae* + *Stipeae* are not represented in the graphic. The green line represents the number of species (log scale) estimated in the crown nodes of the studied Pooideae tribal and subtribal lineages. The red line represents temperatures during the Cenozoic. Chromosome evolution (in dark gray): Filled square, haploid chromosome base number transition based on duplication (polyploidy); filled circle, single chromosome losses. Numbers refer to the number of events at each temporal window. Pl, Pliocene.

chromosome mutation events affecting several taxa (*Phalaris coerulea* Desf., *Phalaris minor* Retz. and *Phalaris canariensis* L.; *Briza minor* L., *Parapholis incurva* (L.) C.E.Hubb., *Echinaria capitata* (L.) Desf., *Deschampsia flexuosa* Trin. and *Deschampsia cespitosa* (L.) P.Beauv.) were not accounted for in the simulations (expectations below 0.5). Nevertheless, all of them were single drops in base chromosome number.

## DISCUSSION

### Phylogeny and tempo of divergence of the Pooideae and the core pooids

The recovered topologies (Fig. 1; Fig. S1) largely supported the lineage arrangements proposed for the Poaceae by previous authors (e.g., *GPWG, 2012; Soreng et al., 2015; Kellogg, 2015a; Sancho et al., in press*). The exception to this is the moderate to poorly supported sister relationship recovered between the Pooideae and the Oryzoideae in most analyses (Fig. 1, Figs. S1, S2).

The dates inferred in our analysis for the onset of the diversification of the Pooideae, as well as for the divergences of its main lineages were roughly consistent with previous results by other authors (e.g., *Vicentini et al., 2008; Bouchenak-Khelladi et al., 2009; Sancho et al., in press*). The successive splits of the early-diverging pooid lineages (Brachyelytreae, Nardeae *sensu lato* (*Schneider et al., 2009*), Meliceae, Stipeae, Diarrheneae and Brachypodieae; Fig. 1) concurs with the Late Eocene-Oligocene climate transition to a cooler and drier climate that favored the expansion of grasslands (*Zhonghui et al., 2009; Edwards et al., 2010; Strömberg & McInerney, 2011*). Remarkably, our phylogenetic results support the controversial intermediate positions of Diarrheneae, as sister to the Brachypodieae + core pooids lineage, and of Brachypodieae as sister to core pooids clade (*Davis & Soreng, 2007; Schneider et al., 2009; Soreng et al., 2015; Sancho et al., in press*).

Net diversification rates (from MEDUSA) and chromosome transitions for the Pooideae during the Cenozoic, as recovered in this work, are summarized in Fig. 4. Average deep-sea temperatures (*Beerling & Royer, 2011*) and the increase in species diversity in the subfamily in the last 65 million years have also been included in this figure. Diversification rates were estimated using different methods and combinations of phylogenetic and diversity data (see 'Materials and Methods'), offering congruent results. This congruence highlights the robustness of the methodology used in the face of uncertainty in diversity data (*Feldberg et al., 2014; Laenen et al., 2014*).

Background net diversification rates for the Pooideae ( $r$ ) ranged between 0.098 and 0.127 spp. Myr<sup>-1</sup> (tests based on the pruned consensus tree + 500 diversity matrices vs tests applied on 500 post burn-in pruned trees) in MEDUSA analysis and 0.10037 spp. Myr<sup>-1</sup> in BAMM analysis constrained to constant diversification rates within regimes, which is consistent with the rate estimated for the Poales by *Magallón & Sanderson (2001; r = 0.1013)*. In MEDUSA analysis, we found three different putative deviations from the background net rate of diversification in the Pooideae, regardless of the analysis considered. One of these deviations (a decrease in the rate) affected the early-diverging, highly isolated pooid lineage of Nardeae *s. l.* (i.e., Nardeae + Lygeae) ( $r = 0.016$  and  $r = 0.014$ ;  $SD = 0.002$  and  $0.003$  in the consensus tree + 500 diversity matrices and the 500 post burn-in trees analyses, respectively; Figs. 2A, 2B–2D). In BAMM analysis—with speciation rates allowed to change within regimes—, we found also a shift in diversification rates in this clade. This shift dated back to the Mid Eocene-Early Oligocene (stem to crown node, Fig. 4). This date predates that of the bursting diversification of grasses that took place in the Oligocene-Miocene resulting in the adaptation of the Pooideae to open

habitats (*Bouchenak-Khelladi et al., 2010*), and could explain the current extraordinarily small diversity of these two monotypic tribes, adapted to opposite ecological conditions (moist habitats Nardeae, aridic saline-soil habitats Lygeae). Another shift (an increase in the rate) was detected for the Meliceae + Stipeae ( $r = 0.016$  and  $r = 0.014$ ;  $SD = 0.002$  and  $0.003$  in the consensus tree + 500 diversity matrices and the 500 post burn-in trees analyses, respectively; *Figs. 2A, 2B–2D*), agreeing with the present taxonomic richness of these pooid tribes (*Kellogg, 2015a*). However, support for the Meliceae-Stipeae stem branch is low in our phylogenetic analyses (*Fig. 1, 2A*) and no significant conclusions can be drawn from this result. In BAMM analysis—with speciation rates allowed to change within regimes—, we also found also a shift in diversification rates in the clade of tribe Brachyelytreae but this was not detected in MEDUSA analyses.

Within the core pooids our results are consistent with those of *Schneider et al. (2009)*, detecting three lineages within Triticodae, that correspond to subtribes Triticinae, Hordeinae and Brominae (*Fig. S1*). Our dating suggests an earlier radiation of the Triticinae (14.2 Myr (HPD 8.5–20.4 Myr)) as compared to that of the Brominae (11 Myr (HPD 6.1–17.3 Myr)) in the Miocene (*Fig. 1*). Our tree also reconstructs a large Poodae lineage that includes former Aveneae, Poeae, Hainardieae, Phalaridae, Phleae and Seslerieae (*sensu Tzvelev, 1976*) representatives. Within Poodae the split between the Aveneae-type and the Poeae-type cpDNA lineages (*Fig. 1; Quintanar, Castroviejo & Catalán, 2007; Saarela et al., 2010*) was estimated to have occurred in the Early Oligocene (30.6 Myr (HPD 25.9–34.9 Myr); *Fig. 1*), whereas lineages within these large clades radiated from the Mid-Miocene to the Pleistocene (*Fig. 1*). The phylogenetic relationships recovered for lineages within these groups are consistent with previous data (e.g., *Soreng et al., 2003; Quintanar, Castroviejo & Catalán, 2007; Gillespie et al., 2008*). Our divergence time estimations suggest an early Miocene origin for *Festuca* L. and its closest allies (20 Myr) that predates the estimation of *Inda et al. (2008; 13 Myr)* but is similar to that of *Minaya et in press al. (2017; 22.5 Myr)*.

Diversification within the core pooids was especially active from the Late Oligocene to the Pleistocene, which is congruent with the expansion process of C3 temperate Eurasian grasses that began in the Early Oligocene (e.g., *Bouchenak-Khelladi et al., 2010; Edwards et al., 2010*). A clearly significant shift in net diversification rates was detected for this group ( $r = 0.241$ , consensus tree analysis + 500 diversity matrices, and  $r = 0.1921$ , analysis based on 500 post burn-in trees;  $SD = 0.005$  and  $0.029$ ; *Figs. 2A, 2B–2D*). In BAMM analysis -constrained to constant diversification rates within regimes-, we found also a clear shift in diversification rates in this clade (up to  $0.21758$  spp.  $\text{Myr}^{-1}$ ). Our results indicate a temporal coincidence between the increase in the rate of diversification detected in the core pooids and the drop in global temperatures that took place in the Middle to Late Eocene and the Oligocene (*Beerling & Royer, 2011*). Interestingly, this increase in diversification of the mostly temperate core pooids occurred before the divergence and diversification of the ungulate families Bovidae and Cervidae in moist Eurasian regions, which took place in the Late Oligocene (*Matthee & Davis, 2001; Bouchenak-Khelladi et al., 2009*). By contrast, diversification of tropical, mostly C4, PACMAD grasses concurred mostly with the diversification of some mammalian herbivorous lineages like Antilopinae *s.l.*, Hippotraginae and Alcelaphinae within the Bovidae (*Bouchenak-Khelladi et al., 2009*).



Several authors have highlighted the connection between the development of a cooler, dryer climate in the Oligocene and the diversification of the pooid grasses in recent years (Kellogg, 2001; Bredenkamp, Spada & Kazmierczak, 2002; Strömberg, 2005; Edwards et al., 2010; Strömberg & McInerney, 2011). The same pattern has been discovered for other highly diverse herbaceous groups such as the Cyperaceae (Escudero et al., 2012; Escudero & Hipp, 2013). The diversification of the entirely C3 core pooids during the Oligocene continued during the Miocene and the Pliocene (Fig. 1) and developed into primary grasslands in both hemispheres (Bouchenak-Khelladi et al., 2009; Edwards et al., 2010).

The number of diversification shifts detected for the C4 grass lineages in a genus-level phylogenetic analysis ( $n = 800$ ) of the PACMAD group was much higher and occurred in more recent times (24 shifts during the Pliocene and the Miocene according to Bouchenak-Khelladi et al., 2009) as compared to the Pooideae. This could be explained, at least partially, by differences in the methodology, sampling and evolutionary scale of the analyses (see Bouchenak-Khelladi et al., 2009). However, no shift older than 23 (18.2–27.8) Myr was detected in the PACMAD despite the much older origin of the group (Late Eocene; Bouchenak-Khelladi et al., 2009). Additionally, no shifts younger than the boundary between the Eocene and the Oligocene were detected in our analyses despite the fact that 27 (14 tips and 13 nodes) of the 46 (23 tips and 25 nodes) analyzed clades are younger than this boundary. This difference could be explained by the heterogeneous expansion and diversification of the C4 grasses, triggered mostly by local ecological factors and disturbances rather than by changes in atmospheric conditions (Osborne & Beerling, 2006). According to Tiplle & Pagani (2007) and Edwards & Still (2008), this ecological heterogeneity in the Miocene mostly affected warm parts of the world, where pooid grasses were less represented. Our results show that the temperate core pooids have presented a high and relatively constant diversification rate correlated with (and possibly influenced by) the atmospheric conditions in temperate areas (Fig. 4). We have also observed a gap between the taxonomic diversification in Pooideae that started in the Mid Eocene-Early Oligocene (Fig. 1) and their rise to ecological dominance today, mostly in the Northern Hemisphere. Strömberg (2005) found a similar pattern in the Cenozoic of North America. This observation supports the idea that the diversification of grasses was prior to the opening of new ecological opportunities derived from the Neogene climatic deterioration (Strömberg, 2005).

### Chromosome evolution in the core pooids

Chromosome transitions are considered key mechanisms in angiosperm evolution (e.g., Soltis et al., 2009). Different events are included in these mechanisms, mainly polyploidy (including polyploidization and demi-polyploidization *sensu* Mayrose, Barker & Otto, 2010), gains, and losses of single chromosomes (Cohlman et al., 2005). Transitions, especially polyploidy (in the broad sense) are widespread in angiosperm evolution (e.g., Soltis et al., 2009; Mayrose et al., 2011), and their impact in diversification has been widely disputed (Soltis et al., 2009; Arrigo & Barker, 2012, and references therein, but see also Soltis et al., 2014). Recent reviews of the methodologies used to assess the connection

between polyploidisation and diversification indicate that such relationship is ambiguous (Kellogg, 2016).

Our analyses show that the underlying haploid chromosome number ( $n = 7$ ) is remarkably constant throughout the core pooid phylogenetic tree (Fig. 3). This number is consistent with the literature (e.g., Tzvelev, 1989; Shchapova, 2012) and represents a derived state in the family (Salse et al., 2008). Our analysis detected 11 chromosome changes throughout the phylogeny (Figs. 3 and 4). More specifically, we detected 10 single chromosome losses (87.5%) and one polyploidization (transition by base number; all intrageneric polyploidisation events were excluded from our analysis; Cusimano, Sousa & Renner, 2012). All changes were restricted to middle to shallow levels of the tree, up to the Pliocene-Pleistocene (21 Myr-present; Figs. 3 and 4).

The prevalence of polyploidy in the core pooids has been highlighted by several authors (e.g., Hsiao et al., 1995; Catalán, Kellogg & Olmstead, 1997), with allopolyploidy being especially important in the grasses (e.g., Stebbins, 1971; Levy & Feldmann, 2002; Roodt & Spies, 2003; Kellogg, 2015a). Our analyses failed to register polyploidization events that led to the origin of new genera (with the possible exceptions of *Arctagrostis* Griseb. and *Ammophila* Host.) and we did not find a direct relationship between the shifts in diversification and polyploidization (Fig. 4). However, the question remains open since shallow parts of the phylogeny were not included in our diversification analyses that were performed without full sampling of extant species. Nevertheless our findings would reinforce the idea that newly formed polyploid lineages in the core pooids might experience higher extinction risk and fail to persist, as described in other angiosperm lineages (e.g., Fawcett, Maere & Van de Peer, 2009; Mayrose et al., 2011; Escudero et al., 2014; but see Soltis et al., 2014, and Kellogg, 2016), or that the analysis is not well suited for hybrid allopolyploid scenarios (Soltis et al., 2014; Kellogg, 2016). It is important to consider, however, that we are assuming (for genera with unclear phylogenies; e.g., *Koeleria* Pers., *Parapholis* C.E.Hubb.), that the lowest chromosome number in the group represents the earliest branching lineage. Besides, very diverse genera that are entirely polyploid (e.g., *Calamagrostis*, *Elymus*; Hilu, 2006; Kellogg, 2015a) have not been included in our analysis. The existence of allopolyploid clades seems to indicate that in some instances there is an association between polyploidy and rapid diversification, supporting polyploidy as an evolutionary driving force in some specific (generic) lineages of the core pooids, as suggested by Stebbins (1985). To what extent that trend applies to taxonomic levels above the species is disputed (Mayrose et al., 2011; Soltis et al., 2014).

Our results must be interpreted cautiously due to limitations in the analysis as well as in our data set. Chromevol tracks changes along a phylogeny where relationships are expressed as dichotomies in a phylogenetic tree. It has not been designed to analyze reticulate evolution scenarios involving allopolyploidy (Soltis et al., 2014; Kellogg, 2016), common in the Pooideae (e.g., Winterfeld et al., 2014; Kellogg, 2015a). This is one of the main criticisms of the method and might affect the precision of its estimates, especially since the effect of polyploidy on topologies is not well understood (Soltis et al., 2014). As noted by Mayrose et al. (2014), this criticism applies to most comparative methods using

phylogenies. By using uniparentally inherited plastid markers, we expect a fully bifurcating phylogeny even in the face of widespread interspecific hybridization (Mayrose *et al.*, 2014). However, maternally-inherited plastid markers are also prone to topological conflicts in those cases where bidirectional crosses have resulted in the same allopolyploid species, like reported in several pooids (Catalán *et al.*, 2016, and references therein).

## CONCLUSIONS

The phylogenetic tree obtained was largely congruent with previously published results. Diversification of the BOP clade took place between the Middle to Late Paleocene onwards and tribes Diarrheneae and Brachypodieae were shown as intermediate between the early diverging basal pooids (Brachyelytreae, Nardeae, Meliceae+Stipeae) and the more recently evolved core pooids (Poodae, Triticodae). Early divergence seems to be correlated with the expansion of grasslands due to climate changes in the Late Eocene-Oligocene.

Net diversification rates within the Pooideae were not constant, and one to three strongly to weakly supported shifts were detected, affecting the core pooids (Poodae + Triticodae) and the tribes Nardeae, Stipeae + Meliceae and Brachyelytreae. The shift in the core pooids was dated back to the Late Oligocene-Early Miocene, which is consistent with the drop in global temperatures and the expansion of C3 temperate Eurasian grasslands.

No links were found between chromosome transitions and major diversification events in the core pooids, as chromosome mutations were mostly restricted to shallow parts of the phylogeny. The base haploid chromosome number ( $n = 7$ ) was remarkably stable in the core pooids phylogeny, representing a derived state in the family.

## ACKNOWLEDGEMENTS

We thank Carmen Acedo, Alicia Alonso, Félix Llamas, Luis Ángel Inda and Pedro Jiménez for contributing with sample collection, María Luisa López-Herranz and Dorina Pitorac for their help and advice in the lab, Magnus Popp for ideas and discussions, and Emily Lemonds for reviewing the linguistic quality of the manuscript. Special thanks are due to Luis Villar (JACA Herbarium) and the curators at SALA, SANT and MA for loaned specimens. We also thank the two anonymous reviewers for their improvements in the manuscript.

## ADDITIONAL INFORMATION AND DECLARATIONS

### Funding

This work was supported by three consecutive grants from the Spanish Ministry for Science and Technology (CGL2006-00319, CGL2009-12955-C02-01, CGL2009-12955-C02-02). MP was supported by a postdoctoral grant from the Galician Government. ME was supported by a postdoctoral grant from the Marie Curie IOF program. MAM was supported by a predoctoral grant from the Spanish Ministry for Science and Technology (FPI program). PC and MAM were also partially funded by a Bioflora research team

grant cofunded by the Spanish Aragon Government and the European Social Fund. There was no additional external funding received for this study. The funders had no role in study design, data collection and analysis, decision to publish, or preparation of the manuscript.

### **Grant Disclosures**

The following grant information was disclosed by the authors:

Spanish Ministry for Science and Technology: CGL2006-00319, CGL2009-12955-C02-01, CGL2009-12955-C02-02.

Galician Government.

Marie Curie IOF program.

Spanish Ministry for Science and Technology (FPI program).

Spanish Aragon Government and the European Social Fund.

### **Competing Interests**

Marcial Escudero is an Academic Editor for PeerJ.

### **Author Contributions**

- Manuel Pimentel conceived and designed the experiments, analyzed the data, wrote the paper, prepared figures and/or tables, reviewed drafts of the paper.
- Marcial Escudero analyzed the data, contributed reagents/materials/analysis tools, prepared figures and/or tables, reviewed drafts of the paper, designed the analyses.
- Elvira Sahuquillo and Miguel Ángel Minaya performed the experiments, prepared figures and/or tables, reviewed drafts of the paper.
- Pilar Catalán conceived and designed the experiments, contributed reagents/materials/analysis tools, reviewed drafts of the paper.

### **DNA Deposition**

The following information was supplied regarding the deposition of DNA sequences:

All sequences produced in this manuscript are available in GenBank (for accession numbers, see [Appendix S1](#)). The sequence alignment is available in FigShare (<https://doi.org/10.6084/m9.figshare.5132164.v1>).

### **Data Availability**

The following information was supplied regarding data availability:

Pimentel, Manuel; Escudero, Marcial; Sahuquillo, Elvira; Minaya, Miguel; Catalán, Pilar (2017): Pimenteletal\_sequence\_alignment.nex. figshare.

<https://doi.org/10.6084/m9.figshare.5132164.v1>.

### **Supplemental Information**

Supplemental information for this article can be found online at <http://dx.doi.org/10.7717/peerj.3815#supplemental-information>.

## REFERENCES

- Alfaro ME, Santinia F, Brock C, Alamillo H, Dornburg A, Rabosky DL, Carnevale G, Harmon LJ. 2009. Nine exceptional radiations plus high turnover explain species diversity in jawed vertebrates. *Proceedings of the National Academy of Sciences of the United States of America* **106**:13410–13414 DOI [10.1073/pnas.0811087106](https://doi.org/10.1073/pnas.0811087106).
- Arrigo N, Barker MS. 2012. Rarely successful polyploids and their legacy in plant genomes. *Current Opinion in Plant Biology* **15**:140–146 DOI [10.1016/j.pbi.2012.03.010](https://doi.org/10.1016/j.pbi.2012.03.010).
- Ascherson PF, Graebner P. 1898–1902. *Synopsis der Mitteleuropaischen Flora Glumiflorae I Graminae*. Leipzig: Wilhelm Engelmann.
- Beerling DJ, Royer DL. 2011. Convergent Cenozoic CO<sub>2</sub> history. *Nature Geoscience* **4**:418–420 DOI [10.1038/ngeo1186](https://doi.org/10.1038/ngeo1186).
- Bell MA, Lloyd GT. 2014. Strap. Stratigraphic tree analysis for paleaeontology. Available at <https://cran.r-project.org/web/packages/strap/strap.pdf>.
- Bennett MD, Leitch IJ. 2012. Nuclear DNA amounts in angiosperms. *Annals of Botany* **76**:113–176.
- Bouchenak-Khelladi Y, Salamin N, Savolainen V, Forest F, Van der Bank M, Chase MW, Hodkinson TR. 2008. Large multi-gene phylogenetic trees of the grasses (Poaceae): progress towards complete tribal and generic level sampling. *Molecular Phylogenetics and Evolution* **47**:488–505 DOI [10.1016/j.ympev.2008.01.035](https://doi.org/10.1016/j.ympev.2008.01.035).
- Bouchenak-Khelladi Y, Verboom GA, Hodkinson TR, Salamin N, Francois O, Chonghaile GN, Savolainen V. 2009. The origins and diversification of C4 grasses and savanna-adapted ungulates. *Global Change Biology* **15**:2397–2417 DOI [10.1111/j.1365-2486.2009.01860.x](https://doi.org/10.1111/j.1365-2486.2009.01860.x).
- Bouchenak-Khelladi Y, Verboom GA, Savolainen V, Hodkinson TR. 2010. Biogeography of the grasses (Poaceae): a phylogenetic approach to reveal evolutionary history in geographical space and geological time. *Botanical Journal of the Linnean Society* **162**:543–557 DOI [10.1111/j.1095-8339.2010.01041.x](https://doi.org/10.1111/j.1095-8339.2010.01041.x).
- Bouckaert R, Heled J, Kühnert D, Vaughan T, Wu CH, Xie D, Suchard MA, Rambaut A, Drummond AJ. 2014. BEAST2: a software platform for Bayesian evolutionary analysis. *PLOS Computational Biology* **10**:e1003537 DOI [10.1371/journal.pcbi.1003537](https://doi.org/10.1371/journal.pcbi.1003537).
- Bournham KP, Anderson DR. 2002. *Model selection and multimodel inference: a practical information-theoretic approach*. New York: Springer-Verlag.
- Bredenkamp GJ, Spada F, Kazmierczak E. 2002. On the origin of northern and southern hemisphere grasslands. *Plant Ecology* **163**:209–229 DOI [10.1023/A:1020957807971](https://doi.org/10.1023/A:1020957807971).
- Brown RP, Yang Z. 2011. Rate variation and estimation of divergence times using strict and relaxed clocks. *BMC Evolutionary Biology* **11**:271 DOI [10.1186/1471-2148-11-271](https://doi.org/10.1186/1471-2148-11-271).
- Cahoon AB, Sharpe RM, Mysayphonh C, Thompson EJ, Ward AD, Lin A. 2010. The complete chloroplast genome of tall fescue (*Lolium arundinaceum*; Poaceae) and comparison of whole plastomes from the family Poaceae. *American Journal of Botany* **97**:49–58 DOI [10.3732/ajb.0900008](https://doi.org/10.3732/ajb.0900008).

- Catalán P. 2006.** Phylogeny and evolution of *Festuca* L. and related genera of subtribe *Loliinae* (Poeae, Poaceae). In: Sharma AK, Sharma A, eds. *Plant genome. Biodiversity and evolution*. Enfield: Science Publishers, 255–303.
- Catalán P, Kellogg EA, Olmstead RG. 1997.** Phylogeny of Poaceae subfamily based on chloroplast *ndhF* gene sequences. *Molecular Phylogenetics and Evolution* **8**:150–166 DOI [10.1006/mpev.1997.0416](https://doi.org/10.1006/mpev.1997.0416).
- Catalán P, López-Alvarez D, Díaz-Pérez A, Sancho R, López-Herranz ML. 2016.** Phylogeny and evolution of the genus *Brachypodium*. In: Vogel J, ed. *Genetics and genomics of Brachypodium. Series plant genetics and genomics: crops models*. New York: Springer, 9–38.
- Catalán P, Müller J, Hasterok R, Jenkins G, Mur LAJ, Langdon T, Betekhtin A, Siwinska D, Pimentel M, López-Álvarez D. 2012.** Evolution and taxonomic split of the model grass *Brachypodium distachyon*. *Annals of Botany* **109**:385–405 DOI [10.1093/aob/mcr294](https://doi.org/10.1093/aob/mcr294).
- Catalán P, Olmstead RG. 2000.** Phylogenetic reconstruction of the genus *Brachypodium* Beauv. (Poaceae) from combined sequences of chloroplast gene and nuclear ITS. *Plant Systematics and Evolution* **220**:1–19 DOI [10.1007/BF00985367](https://doi.org/10.1007/BF00985367).
- Catalán P, Torrecilla P, López-Rodríguez JA, Müller J, Stace CA. 2007.** A systematic approach to subtribe *Loliinae* (Poaceae: Pooideae) based on phylogenetic evidence. *Aliso* **23**:380–405 DOI [10.5642/aliso.20072301.31](https://doi.org/10.5642/aliso.20072301.31).
- Catalán P, Torrecilla P, López Rodríguez JA, Olmstead RG. 2004.** Phylogeny of the festucoid grasses of subtribe *Loliinae* and allies (Poeae, Pooideae) inferred from ITS and *trnL-F* sequences. *Molecular Phylogenetics and Evolution* **31**:517–541 DOI [10.1016/j.ympev.2003.08.025](https://doi.org/10.1016/j.ympev.2003.08.025).
- Christin PA, Besnard G, Samaritani E, Duvall MR, Hodkinson TR, Savolainen V, Salamin N. 2008.** Oligocene CO<sub>2</sub> decline promoted C<sub>4</sub> photosynthesis in grasses. *Current Biology* **18**:37–43 DOI [10.1016/j.cub.2007.11.058](https://doi.org/10.1016/j.cub.2007.11.058).
- Clark LG, Zhang WP, Wendel JF. 1995.** A phylogeny of the grass family (Poaceae) based on *ndhF* sequence data. *Systematic Botany* **20**:436–460 DOI [10.2307/2419803](https://doi.org/10.2307/2419803).
- Clayton WD, Renvoize SA. 1986.** *Genera Graminum, grasses of the world*. London: Her Majesty's Stationery Office.
- Clayton WD, Vorontsova MS, Harman KT, Williamson H. 2006.** *GrassBase—the online world grass flora*. London: The Board of Trustees, Royal Botanic Gardens.
- Cohlan AE, Eichler E, Olivera SG, Paterson AH, Stein L. 2005.** Chromosome evolution in eukaryotes: a multi-kingdom perspective. *Trends in Genetics* **21**:673–682 DOI [10.1016/j.tig.2005.09.009](https://doi.org/10.1016/j.tig.2005.09.009).
- Cusimano N, Sousa A, Renner SS. 2012.** Maximum likelihood inference implies a high, not a low, ancestral haploid chromosome number in Araceae, with a critique of the bias introduced by “x”. *Annals of Botany* **109**:681–692 DOI [10.1093/aob/mcr302](https://doi.org/10.1093/aob/mcr302).
- Davis JI, Soreng RJ. 2007.** A preliminary phylogenetic analysis of the grass subfamily Pooideae subfamily Pooideae (Poaceae), with attention to structural features of the plastid and nuclear genomes, including an intron loss in GBSSI. *Aliso* **23**:335–348 DOI [10.5642/aliso.20072301.27](https://doi.org/10.5642/aliso.20072301.27).

- Döring E, Schneider J, Hilu KW, Röser M. 2007. Phylogenetic relationships in the Avenae/Poeae complex Pooideae/Poaceae. *Kew Bulletin* **62**:407–424.
- Drummond AJ, Bouckaert R. 2015. *Bayesian evolutionary analysis with BEAST*. Cambridge: Cambridge University Press.
- Drummond AJ, Rambaut A. 2007. Beast: bayesian evolutionary analysis by sampling trees. *BMC Evolutionary Biology* **7**:214 DOI [10.1186/1471-2148-7-214](https://doi.org/10.1186/1471-2148-7-214).
- Drummond AJ, Suchard MA, Xie D, Rambaut A. 2012. Bayesian phylogenetics with BEAUti and the BEAST 1.7. *Molecular Biology and Evolution* **29**:1969–1973 DOI [10.1093/molbev/mss075](https://doi.org/10.1093/molbev/mss075).
- Duvall MR, Davis JI, Clark LG, Noll JD, Goldman DH. 2007. Phylogeny of the grasses (Poaceae) Revisited. *Aliso* **23**:237–247 DOI [10.5642/aliso.20072301.18](https://doi.org/10.5642/aliso.20072301.18).
- Dwivedi B, Gadagkar SR. 2009. Phylogenetic inference under varying proportions of indel induced alignment gaps. *BMC Evolutionary Biology* **9**:211 DOI [10.1186/1471-2148-9-211](https://doi.org/10.1186/1471-2148-9-211).
- Edwards EJ, Osborne CP, Strömberg CAE, Smith SA, C4 grasses consortium. 2010. The origins of C4 grasslands: integrating evolutionary and ecosystem science. *Science* **328**:587–591 DOI [10.1126/science.1177216](https://doi.org/10.1126/science.1177216).
- Edwards EJ, Still CJ. 2008. Climate, phylogeny and the ecological distribution of C4 grasses. *Ecology Letters* **11**:266–276 DOI [10.1111/j.1461-0248.2007.01144.x](https://doi.org/10.1111/j.1461-0248.2007.01144.x).
- Escudero M, Hipp AJ. 2013. Shifts in diversification rates and clade ages explain species richness in higher level sedge taxa (Cyperaceae). *American Journal of Botany* **100**:2403–2411 DOI [10.3732/ajb.1300162](https://doi.org/10.3732/ajb.1300162).
- Escudero M, Hipp AL, Waterway MJ, Valente LM. 2012. Diversification rates and chromosome evolution in the most diverse angiosperm genus of the temperate zone (*Carex*, Cyperaceae). *Molecular Phylogenetics and Evolution* **63**:650–655 DOI [10.1016/j.ympev.2012.02.005](https://doi.org/10.1016/j.ympev.2012.02.005).
- Escudero M, Martín-Bravo S, Mayrose I, Fernández-Mazuecos M, Fiz-Palacios O, Hipp AL, Pimentel M, Jiménez Mejías P, Valcarcel V, Vargas P, Luceño M. 2014. Karyotypic changes through dysploidy persist longer over evolutionary time than polyploid changes. *PLOS ONE* **9**:e85266 DOI [10.1371/journal.pone.0085266](https://doi.org/10.1371/journal.pone.0085266).
- Fawcett JA, Maere S, Van de Peer Y. 2009. Plants with double genomes might have had a better chance to survive the Cretaceous–Tertiary extinction event. *Proceeding of the National Academy of Sciences of the United States of America* **106**:5737–5742 DOI [10.1073/pnas.0900906106](https://doi.org/10.1073/pnas.0900906106).
- Feldberg K, Schneider H, Stadler T, Schäfer-Verwimp A, Schmidt AR, Heinrichs J. 2014. Epiphytic leafy liverworts diversified in angiosperm-dominated forests. *Scientific Reports* **4**:5974.
- Gillespie LJ, Archambault A, Soreng RJ. 2007. Phylogeny of *Poa* based on *trnT*–*trnF* sequence data: major clades and basal relationships. In: Columbus JT, Frier EA, Porter JM, Prince LM, Simpson MG, eds. *Monocots: comparative biology and evolution—Poales*. Claremont: Rancho Santa Ana Botanical Garden, 420–434.
- Gillespie LJ, Soreng RJ. 2005. A phylogenetic analysis of the bluegrass genus *Poa* based on cpDNA restriction site data. *Systematic Botany* **30**:84–105 DOI [10.1600/0363644053661940](https://doi.org/10.1600/0363644053661940).

- Gillespie LJ, Soreng RJ, Bull RD, Jacobs SWL, Refulio-Rodriguez NF. 2008.** Phylogenetic relationships in subtribe Poinae (Poaceae, Poaeae) based on nuclear ITS and plastid *trnT-trnL-trnf* sequences. *Botany* **86**:938–967 DOI [10.1139/B08-076](https://doi.org/10.1139/B08-076).
- Glick L, Mayrose I. 2014.** Chromevol: assessing the pattern of chromosome number evolution and the inference of polyploidy along a phylogeny. *Molecular Biology and Evolution* **31**:1914–1922 DOI [10.1093/molbev/msu122](https://doi.org/10.1093/molbev/msu122).
- Goldblatt P, Johnson DE. 1979.** *Index to plant chromosome numbers (IPCN)*. Saint Louis: Missouri Botanical Gardens.
- GPWG (Grass Phylogeny Working Group). 2001.** Phylogeny and subfamilial classification of the grasses (Poaceae). *Annals of the Missouri Botanical Garden* **88**:373–457 DOI [10.2307/3298585](https://doi.org/10.2307/3298585).
- GPWG (Grass phylogeny working group II). 2012.** New grass phylogeny resolves deep evolutionary relationships and discovers C4 origins. *New Phytologist* **193**:304–312 DOI [10.1111/j.1469-8137.2011.03972.x](https://doi.org/10.1111/j.1469-8137.2011.03972.x).
- Harmon LJ, Weir JT, Brock CD, Glor RE, Challenger W. 2008.** GEIGER: investigating evolutionary radiations. *Bioinformatics Applications Notes* **24**:129–131 DOI [10.1093/bioinformatics/btm538](https://doi.org/10.1093/bioinformatics/btm538).
- Hilu KW. 2006.** Skewed distribution of species number in grass genera: is it a taxonomic artifact? In: Hodkinson TR, Parnell JAN, eds. *Reconstructing the tree of life. Taxonomy and Systematics of species rich taxa*. London: Taylor & Francis, 174.
- Ho SYW, Phillips MJ. 2009.** Accounting for calibration uncertainty in phylogenetic estimation of evolutionary divergence times. *Systematic Biology* **58**:367–380 DOI [10.1093/sysbio/syp035](https://doi.org/10.1093/sysbio/syp035).
- Hsiao C, Chatterton NJ, Asay KH, Hensen KB. 1995.** Molecular phylogeny of the Pooideae (Poaceae) based on nuclear rDNA (ITS) sequences. *Theoretical and Applied Genetics* **90**:389–398 DOI [10.1007/BF00221981](https://doi.org/10.1007/BF00221981).
- Huelsensbeck JP, Ronquist F. 2001.** MrBayes: bayesian inference of phylogenetic trees. *Bioinformatics* **17**:754–755 DOI [10.1093/bioinformatics/17.8.754](https://doi.org/10.1093/bioinformatics/17.8.754).
- Inda LA, Sanmartín I, Buerki S, Catalan P. 2013.** Mediterranean origin and Miocene–Holocene old world diversification of meadow fescues and ryegrasses (*Festuca* subgenus *Schedonorus* and *Lolium*). *Journal of Biogeography* **41**:600–614 DOI [10.1111/jbi.12211](https://doi.org/10.1111/jbi.12211).
- Inda LA, Segarra-Moragues JG, Muller J, Peterson PM, Catalan P. 2008.** Dated historical biogeography of the temperate Loliinae (Poaceae, Pooideae) grasses in the northern and southern hemispheres. *Molecular Phylogenetics and Evolution* **46**:932–957 DOI [10.1016/j.ympev.2007.11.022](https://doi.org/10.1016/j.ympev.2007.11.022).
- Jacobs SWL, Bayer R, Everett J, Arriaga M, Barkworth M. 2007.** Systematics of the tribe Stipeae (Gramineae) using molecular data. *Aliso* **23**:349–361 DOI [10.5642/aliso.20072301.28](https://doi.org/10.5642/aliso.20072301.28).
- Kellogg EA. 2001.** Evolutionary history of the grasses. *Plant Physiology* **125**:1198–1205 DOI [10.1104/pp.125.3.1198](https://doi.org/10.1104/pp.125.3.1198).
- Kellogg EA. 2015a.** Poaceae. In: *The families and genera of vascular plants*. Berlin: Springer.



- Kellogg EA. 2015b.** *Brachypodium distachyon* as a genetic model system. *Annual Review of Genetics* **49**:1–20 DOI [10.1146/annurev-genet-112414-055135](https://doi.org/10.1146/annurev-genet-112414-055135).
- Kellogg EA. 2016.** Has the connection between polyploidy and diversification actually been tested? *Current Opinion in Plant Biology* **30**:25–32 DOI [10.1016/j.pbi.2016.01.002](https://doi.org/10.1016/j.pbi.2016.01.002).
- Kim ES, Bolsheva NL, Samatadze TE, Nosov NN, Nosova IV, Zelenin AV, Punina EO, Muravenko OV, Rodionov AV. 2009.** The unique genome of two-chromosome grasses *Zingeria* and *Colpodium*, its origin, and evolution. *Russian Journal of Genetics* **11**:1329–1337.
- Laenen B, Shaw B, Schneider H, Goffinet B, Paradis E, Désamoré A, Heinrichs J, Villareal JC, Gradstein SR, McDaniel SF, Long DG, Forrest LL, Hollingsworth ML, Crandall-Stotler B, Davis EC, Engel J, Von Konrat M, Cooper ED, Patiño J, Cox CJ, Vanderpoorten A, Shaw AJ. 2014.** Extant diversity of Bryophytes emerged from successive post-Mesozoic diversification bursts. *Nature Communications* **5**:Article 6134 DOI [10.1038/ncomms6134](https://doi.org/10.1038/ncomms6134).
- Levy AA, Feldmann M. 2002.** The impact of polyploidy on grass genome evolution. *Plant Physiology* **130**:1587–1593 DOI [10.1104/pp.015727](https://doi.org/10.1104/pp.015727).
- Macfarlane TD. 1987.** Poaceae subfamily Pooideae. In: Sonderstrong TR, Hilu KW, Campbell CS, Barkworth ME, eds. *Grass systematics and evolution*. Washington: Smithsonian Institution Press, 265–276.
- Macfarlane TD, Watson L. 1982.** The classification of Poaceae subfamily Pooideae. *Taxon* **31**:178–203 DOI [10.2307/1219983](https://doi.org/10.2307/1219983).
- Magallón S, Castillo A. 2009.** Angiosperm diversification through time. *American Journal of Botany* **96**:349–365 DOI [10.3732/ajb.0800060](https://doi.org/10.3732/ajb.0800060).
- Magallón S, Sanderson MJ. 2001.** Absolute diversification rates in angiosperm clades. *Evolution* **55**:1762–1780 DOI [10.1111/j.0014-3820.2001.tb00826.x](https://doi.org/10.1111/j.0014-3820.2001.tb00826.x).
- Manchester SR. 2001.** Update on the megafossil flora of Florissant Colorado. *Proceedings of the Denver Museum of Nature & Science/Series* **4**:137–161.
- Matthee CA, Davis SK. 2001.** Molecular insights into the evolution of the family *Bovidae*: a nuclear DNA perspective. *Molecular Biology and Evolution* **18**:1220–1230 DOI [10.1093/oxfordjournals.molbev.a003908](https://doi.org/10.1093/oxfordjournals.molbev.a003908).
- Mayrose I. 2014.** *Chromevol version. 2.0 Manual*. Tel Aviv: Tel Aviv University.
- Mayrose I, Barker MS, Otto SP. 2010.** Probabilistic models of chromosome number evolution and the inference of polyploidy. *Systematic Biology* **59**:132–144 DOI [10.1093/sysbio/syp083](https://doi.org/10.1093/sysbio/syp083).
- Mayrose I, Zhan SH, Rothfelds CJ, Arrigo N, Barker MS, Rieseberg LH, Otto SP. 2014.** Methods for studying polyploid diversification and the dead end hypothesis: a reply to Soltis et al. 2014. *New Phytologist* **206**:27–35 DOI [10.1111/nph.13192](https://doi.org/10.1111/nph.13192).
- Mayrose I, Zhan SH, Rothfelds CJ, Magnuson-Ford K, Barker MS, Rieseberg LH, Otto SP. 2011.** Recently formed polyploid plants diversify at lower rates. *Science* **333**:1257 DOI [10.1126/science.1207205](https://doi.org/10.1126/science.1207205).
- Minaya M, Hackel J, Namaganda M, Brochmann C, Vorontsova MS, Besnard G, Catalán P. 2017.** Contrasting dispersal histories of broad- and fine-leaved temperate

- Loliinae grasses: range expansion, founder events, and the roles of distance and barriers. *Journal of Biogeography* **44**:1980–1993 DOI [10.1111/jbi.13012](https://doi.org/10.1111/jbi.13012).
- Müller K. 2005. SeqState-primer design and sequence statistics for phylogenetic data sets. *Applied Bioinformatics* **4**:65–69 DOI [10.2165/00822942-200504010-00008](https://doi.org/10.2165/00822942-200504010-00008).
- Nylander JAA. 2004. MrModeltest v2. Program distributed by the author. Uppsala: Uppsala University.
- Nylander JAA, Wilgenbusch JC, Warren DL, Swofford DL. 2008. AWTY (are we there yet?): a system for graphical exploration of MCMC convergence in Bayesian phylogenetics. *Bioinformatics* **24**:581–583 DOI [10.1093/bioinformatics/btm388](https://doi.org/10.1093/bioinformatics/btm388).
- Osborne CP, Beerling DJ. 2006. Nature's green revolution: the remarkable evolutionary rise of C4 plants. *Philosophical Transactions of the Royal Society B* **361**:173–194 DOI [10.1098/rstb.2005.1737](https://doi.org/10.1098/rstb.2005.1737).
- Paradis E, Claude J, Strimmer K. 2004. APE: analyses of phylogenetics and evolution in R language. *Bioinformatics* **20**:289–290 DOI [10.1093/bioinformatics/btg412](https://doi.org/10.1093/bioinformatics/btg412).
- Pimentel M, Sahuquillo E, Torrecilla Z, Popp M, Catalán P, Brochmann C. 2013. Hybridization and long-distance colonization at different time scales: towards resolution of long-term controversies in the sweet vernal grasses (*Anthoxanthum*). *Annals of Botany* **112**:1015–1030 DOI [10.1093/aob/mct170](https://doi.org/10.1093/aob/mct170).
- Pirie MD, Humphreys AM, Barker NP, Linder HP. 2009. Reticulation, data combination, and inferring evolutionary history: an example from Danthonioideae (Poaceae). *Systematic Biology* **58**:612–628 DOI [10.1093/sysbio/syp068](https://doi.org/10.1093/sysbio/syp068).
- Pirie MD, Humphreys AM, Galley C, Barker NP, Verboom GA, Orlovich D, Draffin SJ, Lloyd K, Baeza CM, Negritto M, Ruiz E, Cota Sánchez HJ, Reimer E, Linder HP. 2008. A novel supermatrix approach improves resolution of phylogenetic relationships in a comprehensive sample of danthonioid grasses. *Molecular Phylogenetics and Evolution* **48**:1106–1119 DOI [10.1016/j.ympev.2008.05.030](https://doi.org/10.1016/j.ympev.2008.05.030).
- Plummer M, Best N, Cowles K, Vines K. 2006. CODA: convergence diagnosis and output analysis for MCMC. *R News* **6**:7–11.
- Quintanar A, Castroviejo S, Catalán P. 2007. Phylogeny of the tribe Aveneae (Pooideae, Poaceae) inferred from plastid *TrnT-F* and nuclear ITS sequences. *American Journal of Botany* **94**:1554–1569 DOI [10.3732/ajb.94.9.1554](https://doi.org/10.3732/ajb.94.9.1554).
- R Development Core Team. 2011. R: a language and environment for statistical computing. Vienna: R Foundation for Statistical Computing. Available at <https://r-project.org>.
- Rabosky DL. 2006. Likelihood methods for detecting temporal shifts in diversification rates. *Evolution* **60**:1152–1164 DOI [10.1111/j.0014-3820.2006.tb01194.x](https://doi.org/10.1111/j.0014-3820.2006.tb01194.x).
- Rabosky DL, Donnellan SC, Grundler M, Lovette IJ. 2014a. Analysis and visualization of complex macroevolutionary dynamics: an example from Australian scincid lizards. *Systematic Biology* **63**:610–627 DOI [10.1093/sysbio/syu025](https://doi.org/10.1093/sysbio/syu025).
- Rabosky DL, Donnellan SC, Talaba AL, Lovette IJ. 2007. Exceptional among-lineage variation in diversification rates during the radiation of Australia's most diverse vertebrate clade. *Proceedings of the Royal Society of London B: Biological Sciences* **274**:2915–2923 DOI [10.1098/rspb.2007.0924](https://doi.org/10.1098/rspb.2007.0924).

- Rabosky DL, Grundler M, Anderson C, Title P, Shi JJ, Brown JW, Huang H, Larson JG. 2014b.** BAMMtools: an R package for the analysis of evolutionary dynamics on phylogenetic trees. *Methods in Ecology and Evolution* 5:701–707 DOI [10.1111/2041-210X.12199](https://doi.org/10.1111/2041-210X.12199).
- Rabosky DL, Santini F, Eastman J, Smith SA, Sidlauskas B, Chang J, Alfaro ME. 2013.** Rates of speciation and morphological evolution are correlated across the largest vertebrate radiation. *Nature Communications* 4:1958 DOI [10.1038/ncomms2958](https://doi.org/10.1038/ncomms2958).
- Rambaut A, Drummond A. 2007.** *Tracer v. 1.4*. Edinburgh: University of Edinburgh.
- Retallack GJ. 2001.** Cenozoic expansion of grasslands and climatic cooling. *The Journal of Geology* 109:407–426 DOI [10.1086/320791](https://doi.org/10.1086/320791).
- Romaschenko K, Peterson PM, Soreng RJ, Garcia-Jacas N, Futorna O, Susanna A. 2012.** Systematics and evolution of the needle grasses (Poaceae: Pooideae: Stipeae) based on analysis of multiple chloroplast loci, ITS, and lemma micromorphology. *Taxon* 61:18–44.
- Ronquist F, Huelsenbeck JP, Van der Mark P. 2005.** *MrBayes 3.1 manual*. San Diego: University of California at San Diego.
- Roodt R, Spies JJ. 2003.** Chromosome studies in the grass subfamily Chloridoideae. I. Basic chromosome numbers. *Taxon* 52:557–583 DOI [10.2307/3647454](https://doi.org/10.2307/3647454).
- Saarela JM, Liu Q, Peterson PM, Soreng RJ, Paszko B. 2010.** Phylogenetics of the grass ‘Aveneae-type plastid DNA clade’ (Poaceae: Pooideae, Poaeae) based on plastid and nuclear ribosomal DNA sequence data. In: Seberg O, Petersen G, Barfod AS, Davis J, eds. *Diversity, phylogeny, and evolution in the monocotyledons*. Copenhagen: Aarhus University Press, 557–587.
- Saarela JM, Peterson PM, Soreng RJ, Chapman RE. 2003.** A taxonomic revision of the Eastern North American and Eastern Asian disjunct genus *Brachyelytrun* (Poaceae): evidence from morphology, phytogeography and AFLPs. *Systematic Botany* 28:674–692.
- Saarela JM, Wysocki WP, Barrett CF, Soreng RJ, Davis JI, Clark LG, Kelchner SA, Pires JC, Edger PP, Mayfield DR, Duvall MR. 2015.** Plastid phylogenomics of the cool-season grass subfamily: clarification of relationships among early-diverging tribes. *AoB Plants* 7:1–27 DOI [10.1093/aobpla/plv046](https://doi.org/10.1093/aobpla/plv046).
- Salse J, Bolot S, Throude M, Jouffe V, Piegu B, Masood Quraishi U, Calcagno T, Cooke R, Delseny M, Feuillet C. 2008.** Identification and characterization of shared duplications between rice and wheat provide new insight into grass genome evolution. *The Plant Cell* 20:11–24 DOI [10.1105/tpc.107.056309](https://doi.org/10.1105/tpc.107.056309).
- Sanchez-Ken JG, Clarke LG. 2010.** Phylogeny and a new tribal classification of the Panicoideae *s.l.* (Poaceae) based on plastid and nuclear sequence data and structural data. *American Journal of Botany* 97:1732–1748 DOI [10.3732/ajb.1000024](https://doi.org/10.3732/ajb.1000024).
- Sancho R, Cantalapiedra CP, López-Álvarez D, Gordon SP, Vogel JP, Catalan P, Contreras-Moreira B.** Comparative plastome genomics and phylogenomics of *Brachypodium*: flowering time signatures, introgression and recombination in recently diverged ecotypes. *New Phytologist* In Press.
- Schneider J. 2013.** Molecular phylogenetic analysis and classification of the Pooideae (Poaceae). Unpublished D. Phil. Thesis, Martin Luther Universität.

- Schneider J, Doring E, Hilu KW, Roser M. 2009.** Phylogenetic structure of the grass subfamily Pooideae based on comparison of plastid matK gene-3' trnK exon and nuclear sequences. *Taxon* **58**:405–424.
- Shchapova AI. 2012.** Evolution of the basic chromosome number in poaceae barnh. *Russian Journal of Genetics: Applied Research* **2**:252–259  
DOI [10.1134/S2079059712030100](https://doi.org/10.1134/S2079059712030100).
- Shi JJ, Rabosky DL. 2015.** Speciation dynamics during the global radiation of extant bats. *Evolution* **69**:1528–1545 DOI [10.1111/evo.12681](https://doi.org/10.1111/evo.12681).
- Simmons MP, Ochoterena H. 2000.** Gaps as characters in sequence-based phylogenetic analyses. *Systematic Biology* **49**:369–381 DOI [10.1093/sysbio/49.2.369](https://doi.org/10.1093/sysbio/49.2.369).
- Soltis DE, Albert VA, Leebens-Mack J, Bell CD, Paterson AH, Zheng C, Sankoff D, DePamphilis CW, Kerr Wall P, Soltis PS. 2009.** Polyploidy and angiosperm diversification. *American Journal of Botany* **96**:336–348 DOI [10.3732/ajb.0800079](https://doi.org/10.3732/ajb.0800079).
- Soltis DE, Segovia-Salcedo MC, Jordon-Thaden I, Majure L, Miles NM, Mavrodiev EV, Mei W, Cortez MB, Soltis PS, Gitzendanner MA. 2014.** Are polyploids really evolutionary dead-ends (again)? A critical reappraisal of Mayrose et al. (2011). *New Phytologist* **202**:1105–1117 DOI [10.1111/nph.12756](https://doi.org/10.1111/nph.12756).
- Soreng RJ, Davis JI, Monica A, Voionmaa MA. 2007.** A phylogenetic analysis of poaceae tribe poeae *sensu lato* based on morphological characters and sequence data from three plastid-encoded genes: evidence for reticulation, and a new classification for the tribe. *Kew Bulletin* **62**:425–454.
- Soreng RJ, Peterson PM, Romaschenko K, Davidse G, Zuloaga FO, Judziewicz EJ, Filgueiras TS, Davis JI, Morrone O. 2003.** Catalogue of new world grasses (Poaceae): IV. Subfamily Pooideae. *Contributions from the United States National Herbarium* **48**:1–730.
- Soreng RJ, Peterson PM, Romaschenko K, Davidse G, Zuloaga FO, Judziewicz EJ, Filgueiras TS, Davis JI, Morrone O. 2015.** A worldwide phylogenetic classification of the Poaceae (Gramineae). *Journal of Systematics and Evolution* **53**:117–137 DOI [10.1111/jse.12150](https://doi.org/10.1111/jse.12150).
- Spriggs EL, Christin PA, Edwards EJ. 2014.** C<sub>4</sub> photosynthesis promoted species diversification during the miocene grassland expansion. *PLOS ONE* **9**:e97722 DOI [10.1371/journal.pone.0097722](https://doi.org/10.1371/journal.pone.0097722).
- Stebbins GL. 1971.** *Chromosomal evolution in higher plants*. London: Addison-Wesley.
- Stebbins GL. 1985.** Polyploidy, hybridization, and the invasion of new habitats. *Annals of the Missouri Botanical Garden* **72**:824–832 DOI [10.2307/2399224](https://doi.org/10.2307/2399224).
- Strömberg CAE. 2005.** Decoupled taxonomic radiation and ecological expansion of open-habitat grasses in the Cenozoic of North America. *Proceedings of the National Academy of Sciences of the United States of America* **102**:11980–11984 DOI [10.1073/pnas.0505700102](https://doi.org/10.1073/pnas.0505700102).
- Strömberg CAE. 2011.** Evolution of grasses and grassland ecosystems. *Annual Review of Earth and Planetary Sciences* **39**:517–544 DOI [10.1146/annurev-earth-040809-152402](https://doi.org/10.1146/annurev-earth-040809-152402).
- Strömberg CAE, McInerney FA. 2011.** The Neogene transition from C<sub>3</sub> to C<sub>4</sub> grasslands in North America: assemblage analysis of fossil phytoliths. *Paleobiology* **37**:50–71 DOI [10.1666/09067.1](https://doi.org/10.1666/09067.1).

- Swofford DL. 2002.** PAUP\* Phylogenetic analysis using parsimony. Version 4. Sunderland: Sinauer Associates.
- Tipple BJ, Pagani M. 2007.** The early origins of terrestrial C<sub>4</sub> photosynthesis. *Annual Review of Earth and Planetary Sciences* **35**:435–461  
DOI [10.1146/annurev.earth.35.031306.140150](https://doi.org/10.1146/annurev.earth.35.031306.140150).
- Tzvelev NN. 1976.** *Grasses of the Soviet Union, vols 1 and 2 Nauka, Leningrad.* (Cited from the English translation 1983). New Delhi: Oxonion Press.
- Tzvelev NN. 1989.** The system of grasses (Poaceae) and their evolution. *The Botanical Review* **55**:141–203 DOI [10.1007/BF02858328](https://doi.org/10.1007/BF02858328).
- Vicentini A, Barber J, Aliscioni SS, Giussani LM, Kellogg EA. 2008.** The age of the grasses and clusters of origins of C<sub>4</sub> photosynthesis. *Global Change Biology* **14**:2963–2977 DOI [10.1111/j.1365-2486.2008.01688.x](https://doi.org/10.1111/j.1365-2486.2008.01688.x).
- Watson L, Dallwitz MJ. 1992.** The families of flowering plants: descriptions, illustrations, identification, and information retrieval. Version: 12th September 2017. Available at [delta-intkey.com/grass](http://delta-intkey.com/grass).
- Wertheim JO, Sanderson MJ, Worobey M, Bjork A. 2010.** Relaxed molecular clocks, the bias- variance trade—off and the quality of phylogenetic inference. *Systematic Biology* **59**:1–8 DOI [10.1093/sysbio/syp072](https://doi.org/10.1093/sysbio/syp072).
- Winterfeld G, Döring E, Röser M. 2009.** Chromosome evolution in wild oat grasses (Aveneae) revealed by molecular phylogeny. *Genome* **52**:361–380 DOI [10.1139/G09-012](https://doi.org/10.1139/G09-012).
- Winterfeld G, Perner K, Röser M. 2011.** Genome composition and origin of the polyploid Aegean grass *Avenula agropyroides* (Poaceae). *Journal of Biogeography* **38**:727–741 DOI [10.1111/j.1365-2699.2010.02428.x](https://doi.org/10.1111/j.1365-2699.2010.02428.x).
- Winterfeld G, Schneider J, Perner K, Röser M. 2014.** Polyploidy and hybridization as main factors in speciation: complex reticulate evolution in the grass genus *Helictochloa*. *Cytogenetic and Genome Research* **142**:204–225 DOI [10.1159/000361002](https://doi.org/10.1159/000361002).
- Zhonghui L, Pagani M, Zinniker D, DeConto R, Huber M, Brinkhuis H, Shah SR, Leckie RM, Pearson A. 2009.** Global cooling during the Eocene-Oligocene climate transition. *Science* **323**:1187–1190 DOI [10.1126/science.1166368](https://doi.org/10.1126/science.1166368).
- Zucol AF, Passeggi M, Brea NI, Patterer MAG, Fernández P, Colobig MM. 2010.** Phytolith analysis for the Potrok Aike lake drilling project: sample treatment protocols for the pasado microfossil manual. In: Corbella H, Maidana NI, eds. *1ª reunión internodas del proyecto interdisciplinario patagonia austral y 1er workshop argentino del proyecto potrok aike maar lake sediment archive drilling project*. Proyecto Editorial PIPA, 81–84.